



TECHNOLOGY SOLUTIONS TRANSFORMING CONSTRUCTION LAYOUT

# Trimble Field Link



85 11th Street | Ambridge, PA 15003  
724-266-1600 | [PLI@laserinst.com](mailto:PLI@laserinst.com)

# Trimble Field Link

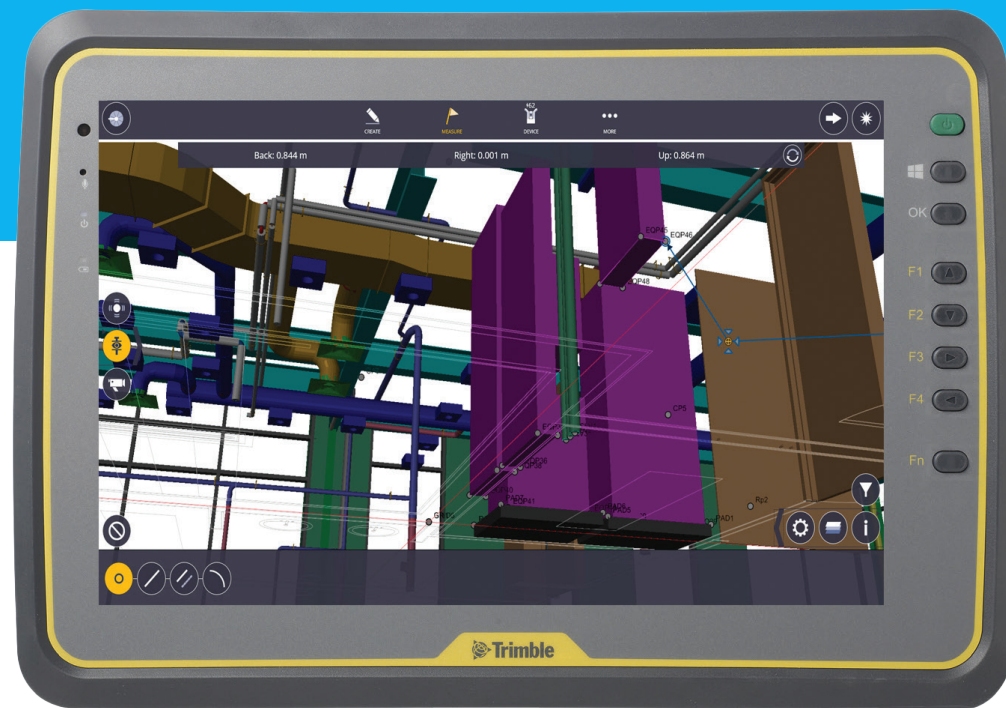
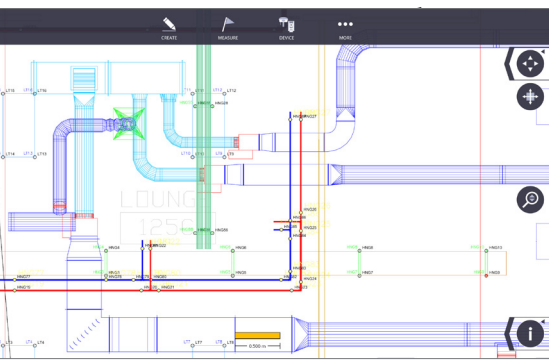
## Smaller Margins Require Smarter Technology Investments

Projects these days leave little room for error to stay profitable. With tight budgets on nearly every project, contractors know that a lack of efficiency can affect the ability to bid better and build better. Success relies on the coordination of key variables to make sure costly rework is avoided even as timelines shrink.

To stay ahead in such competitive times, contractors need a partner with deep industry knowledge rooted in how people work. And, with increased reliance on 3D models and model coordination, having a technology portfolio that delivers precision, visibility and optimized control is necessary for success. Trimble's innovation and leading reputation in the construction industry comes from understanding the contractor experience. It's a thoughtful process of listening first, then optimizing the right solutions for our customers.

## Enter Trimble Field Link

Trimble Field Link is the definitive construction layout software solution **designed specifically for contractors** – not surveyors. Featuring the right combination of tools for the each layout job, the solution includes the Trimble Field Link software powering the ruggedized Trimble Tablet and delivering a useful connection to a variety of layout tools. This unified combination of hardware and software increases productivity and accuracy in the field, reduces rework, provides easy-to-use, task-based workflows and delivers a greater return on investment.



## Trimble Field Link

Taking full advantage of the Trimble Tablet's processor and multi-touch screen functionality, Trimble Field Link has been designed to work the way you work. Featuring intuitive workflows, office (BIM) to field connection, 2D & 3D job data in the field and an easy to use interface, Trimble Field Link is the single software solution contractors trust for their construction layout tasks.

### One software means one solution for all layout tasks

Never switch between multiple software solutions or controller units again. With a simplified user interface (UI) and improved task-based workflows, Trimble Field Link now works with a range of instruments for both interior and exterior layout including Trimble Robotic Total Stations, the Trimble Rapid Positioning Tool and GNSS receivers. Field layout crews can now use the most suitable positioning technology for unique layout tasks—without switching between multiple controller units or field software, and requiring no additional training.

### Better visibility - connecting the office (BIM) to the field

Give field crews the visibility to the detailed information they need to make faster, more accurate decisions. Trimble provides contractors the only process for construction-ready BIM, connecting them to the important field details and actionable items for project visibility and ongoing maintenance. Featuring CAD-based field point creation solutions as part of the detailing process, contractors can easily export a design file and import that file into Trimble Field Link - helping to reduce errors and maximize productivity.

#### Advantages include:

- ▶ View and execute field stakeout routines within 3D models created in popular BIM detailing packages
- ▶ View field point attributes created in the office that define various data points such as: manufacturer, component type and size, etc.
- ▶ Collect field point deviations within the stakeout routines and export for use in BIM detailing solutions back in the office.
- ▶ Create design locations from CAD such as endpoint, midpoint, arc/circle, node, insertion, and intersection.



### Modular Feature Packs – Get only what you need.

Scalability and choice is essential when considering new software. With tighter budgets, contractors want to purchase a solution that delivers the functionality they need with the scalability to grow. Trimble's modular feature packs provide contractors the flexibility to implement only the functionality that they need, and to scale incrementally as their business grows.

### Customizable, easy-to-use interface

With an interface that's easy to navigate and featuring the ability to customize views, users are up and running faster with less downtime for learning. Additionally, users have the ability to customize their view of the layout screen to view in full-screen mode, as a list, as a 2D overhead map, and as a 3D map. Featuring a "Bullseye" view in layout mode, horizontal and vertical in-tolerance notifications are displayed when the prism is near the field point.



# Hardware

## Innovative. Practical. Construction-specific.

Hardware products designed for the specific needs of contractors.

### The right tool for the right job - always!

One of Trimble's core commitments is offering contractors the right hardware products for the right job. Our best-in-class solutions are designed specifically for contractors to complete simple or complex tasks in the field, supporting the unique needs of a contractor.



Trimble Robotic Total Station (RTS) Series

Trimble Robotic Total Stations provide continuous measurement information for the accurate layout of design data. On the jobsite, contractors can set up the total station in a convenient, visible location and perform positioning up to 700 meters away, so that dangerous or difficult locations can be reached safely.



Trimble Rapid Positioning Tool (RPT)

Created specifically for common layout jobs on the construction site, the Trimble Rapid Positioning Tool automates the measuring of distances up to 100 meters away, finding positions faster and more accurately than a tape measure ever could. Designed with smart features for easier use, the Trimble Rapid Positioning Tool includes a 300° vertical field-of-view for overhead work, and with integrated Autostationing™, the system self-locates with no leveling required. A highly visible green laser makes marking a spot easier and Trimble VISION technology provides operators with the same visibility that the instrument sees for more accurate and efficient layout jobs.






Trimble R8s

Delivering sub-centimeter position data, contractors can gain confidence in the accuracy of their site work and utility layout. While Robotic Total Stations are important tools on the jobsite, line of sight or other obstacles may make them difficult to use for certain site activities.

Global Navigation Satellite Systems (GNSS) are a great alternative for accurate site layout when RTS's aren't feasible. Trimble Field Link paired with the Trimble R8s GNSS delivers an easy-to-use system with a construction layout solution designed for contractors, not surveyors. The Trimble R8s is ideal for site applications including: underground utilities, footings, pilings, retaining walls, light pole placement and trenching activities.

## How to select the right layout tool

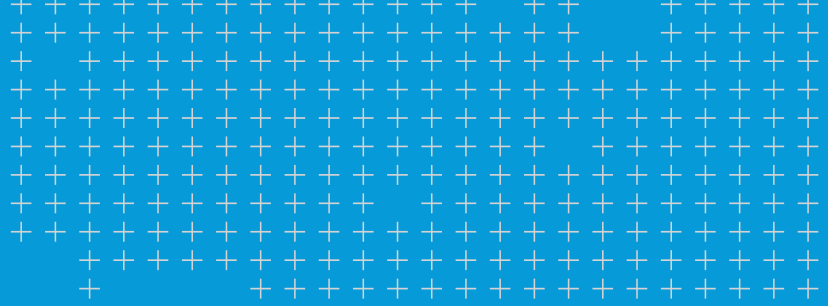
	New Construction	Renovation Project
 <b>Site work</b> i.e. Underground Utilities	RTS R8s (determined based on line of sight)	RTS R8s (determined based on line of sight)
 <b>Ondeck Layout</b> i.e. Metal Deck & Concrete Slabs	RTS – long range RPT – short range	RTS RPT
 <b>Interior Layout</b> i.e. Overhead Existing	RTS	RPT (recommended) RTS



### Trimble Kenai Tablet

Engineered for harsh field conditions, the Trimble Kenai Tablet is rugged and built to withstand the daily abuse of construction work. It meets stringent military standards for drops, vibration and humidity; and with an IP65 rating, it is protected against dust and water. Other features include:

- ▶ Outdoor direct sunlight readable color display
- ▶ 10 inch multi-touch capacitive touchscreen
- ▶ Microsoft® Windows 10 Professional operating system
- ▶ 8 GB DDR3 DRAM
- ▶ 8 MP Camera with autofocus, geo-tagging and LED flash
- ▶ Bluetooth® 4.0 and W-Fi b/g/n
- ▶ Gorilla® Glass panel
- ▶ Extended battery for a full day of layout on the jobsite
- ▶ Easy to read and operate – even with work gloves



# Transforming the way contractors work

In an ever-evolving industry, we understand the importance of providing the tools that allow contractors the power to bid and build better and ultimately stay in front of the competition. By supporting the entire project lifecycle with a full continuum of solutions, we connect hardware and software with your team and workflows for success today and long into the future.



**NORTH AMERICA**  
Trimble Inc.  
10368 Westmoor Drive  
Westminster CO 80021  
USA

**EUROPE**  
Trimble Germany GmbH  
Am Prime Parc 11  
65479 Raunheim  
GERMANY  
+49-6142-2100-0 Phone  
+49-6142-2100-140 Fax

**ASIA-PACIFIC**  
Trimble Navigation  
Singapore Pty Limited  
80 Marine Parade Road  
#22-06, Parkway Parade  
Singapore 449269  
Singapore  
+65-6348-2212 Phone  
+65-6348-2232 Fax

Contact your local dealer today

© 2017, Trimble Inc. All rights reserved. Trimble, the Globe & Triangle logo, and Trimble Field Link are trademarks of Trimble Inc., registered in the United States and in other countries. All other trademarks are the property of their respective owners.

TRANSFORMING THE WAY THE WORLD WORKS

