

**Precision Laser
& Instrument, Inc.**
www.laserinst.com

Order Online Anytime!
www.laserinst.com

Construction • Survey • GIS

Sales Service Rentals Training Support



Total Stations



GNSS Receivers



Construction Lasers



Field Supplies & Accessories



Winter 2019 Catalog (Ver. 8.4L)

Surveying Equipment, Supplies & Accessories

"Your Hand Guide to Positioning Essentials!"

Locations:

Pittsburgh, PA (HQ): 724-266-1600
Cincinnati, OH: 513-539-0022
Charleston, WV: 304-776-1831

Columbus, OH: 614-759-1000
Akron, OH: 330-633-4900
Bridgeport, WV: 304-933-3036



Local Pick-Up & Delivery!



**See Back Cover
for Full Store Addresses.**

*Note: All prices in this catalog are subject to change per dealer discretion.



Table of Contents



Field Supplies & Accessories

Grade Rods	Page 3
Tripods & Tripod Accessories	Page 3
Tribrachs & Adapters	Page 4
Prisms	Page 4
Plumb Bobs & Accessories	Page 4-5
Datum Markers & Smart Targets	Page 5
Prism Poles & Accessories	Page 5-6
Bipods	Page 6
Hand Levels	Page 6
Automatic Levels, Transits & Theodolites	Page 7
Nails & Fasteners	Page 7
Tape Measures & Measuring Wheels	Page 8-9
Rebar & Rebar Caps	Page 9
Marking Paint	Page 10
Lumber Crayons & Paint Sticks	Page 10
Survey Benchties & Hub Discs	Page 10
Brass Survey Markers	Page 10-11
Wood Hubs, Flats, Lath & Stakes	Page 11
Drafting Supplies	Page 11
Flagging & Whiskers	Page 12
Field Books & Binders	Page 13
Carrying Cases & Bags	Page 13
Safety Glasses	Page 14
Hard Hats	Page 14
Safety Vests	Page 14
Two-Way Radios	Page 15
Road Signs & Accessories	Page 15
Survey Vehicle Accessories	Page 15
Hand Tools	Page 16-17
Alternative Leveling Solutions	Page 17



Construction Layout Solutions

Leveling Lasers	Page 18
Grade Lasers	Page 18
Pipe & Utility Lasers	Page 19
Interior Lasers	Page 20
Hand Receivers	Page 20-21
Machine Receivers	Page 21
One Person Construction Positioning Package	Page 22
Two-Person Construction Positioning Packages	Page 23



Build Construction Solutions

Build Construction Equipment Hardware, Software, Sales & Support	Page 24-25
------------------------------------------------------------------------	------------



Geospatial Positioning Equipment & Accessories

Trimble SX10 & S-Series Robotic Total Stations & Survey Controllers	Page 26
Trimble R10 & R8s GNSS Receivers	Page 27
Hydrographic Surveying Solutions	Page 28
Spectra Precision & Nikon Financing Program Credit Application Form	Page 29
Spectra Precision GNSS Receivers	Page 30
Nikon Mechanical Total Stations	Page 30
Spectra Precision Robotic Total Stations	Page 31
Spectra Precision Data Collectors & Software	Page 31
Warranty Plans for Geospatial Equipment	Page 32-33
Virtual Reference Station (VRS) Solutions	Page 34
Survey Total Station Accessories	Page 35
Survey GNSS Receiver Accessories	Page 35
Instrument Radio Accessories	Page 35
Survey Data Controller Accessories	Page 35-36
Mobile Computing Tablet Accessories	Page 37
Mapping & GIS Equipment Accessories	Page 37
Underground/Utility Locators	Page 38
Trimble Forensics Law Enforcement Solutions	Page 39



The PLI Difference

Precision Laser & Instrument, Inc. is a Factory Authorized Warranty Service Center specializing in Cleaning, Calibration & Warranty Repairs.

From Sales & Rentals to Service & Support, our expert staff is what sets us apart!



Field Supplies & Accessories

Grade Rods

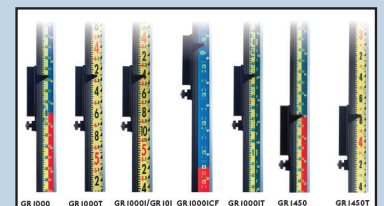
Crain/Seco Grade Rods

Part #	Description	Qty	PLI Price
7301-50/7321-50	Seco 16ft. Aluminum Rod - Engineer/Inches	1	\$66.50
92021/92022	Crain CR 13ft. Fiberglass Leveling Rod - Engineer/Inches	1	\$74.95
92041/92042	Crain CR 16ft. Fiberglass Leveling Rod - Engineer/Inches	1	\$107.00
92031/92032	Crain CR 20ft. Fiberglass Leveling Rod - Engineer/Inches	1	\$116.95
98010/98011	Crain SVR 25ft. Fiberglass Leveling Rod - Engineer/Inches	1	\$193.95
90004	Crain LR-STD 25ft. Fiberglass Round Rod - Engineer	1	\$251.95
90022	Crain LR-PRO 25ft. Fiberglass HD Round Rod - Engineer	1	\$279.50
90024	Crain LR-PRO 35ft. Fiberglass HD Round Rod - Engineer	1	\$438.25
90026	Crain LR-PRO 45ft. Fiberglass HD Round Rod - Engineer	1	\$525.50
91258	Crain 5/8in. x 11in. Prism Mounting Adapter Kit	1	\$17.95



LaserLine Manufacturing, Inc. Leveling/Laser Rods

Part #	Description	Qty	PLI Price
GR1000/GR1000T	LaserLine Lenker-Style 10ft Laser Rod (ft, 10ths, plus cut/fill)	1	\$189.00
GR1000I /GR1000ICF	LaserLine Lenker-Style 10ft Laser Rod (ft, in, cut/fill)	1	\$189.00
GR1450/GR1450T	LaserLine Lenker-Style 15ft Laser Rod (ft, 10ths, plus cut/fill)	1	\$265.00
1000-1301 /1000-1302	LaserLine 10ft (3m)/15ft (5m) Laser Rod Carrying Case	1	\$35.00/\$38.00
1000-1026	LaserLine 10ft (10ths) Replacement Tape	1	\$65.00
B-STORM	LaserLine Rod Bracket (HL700/750/450 & Rod Eye Digital Receiver)	1	\$65.00
B1/UB-1	LaserLine Universal Rod Brackets	1	\$65.00/\$75.00



L LASERLINE
MANUFACTURING, INC.

Tripods & Tripod Accessories

CST/Berger Tripods & Accessories

Part #	Description	Qty	PLI Price
60-ALQRI20-BPL	CST/Berger Aluminum Quick Clamp Tripod	1	\$79.50
60-FGHD20	CST/Berger Heavy Duty Fiberglass Tripod w/ Quick Clamp	1	\$123.00
60-WDF20	CST Wood Fiberglass Leg Tripod w/ Logo	1	\$142.00
60-ALQRI20ELAZ	CST/Berger Elevating Tripod w/ Quick Clamp	1	\$210.00



Crain, Nedo, Seco Tripods

Part #	Description	Qty	PLI Price
5610-00	Seco HD Aluminum Tripod Stabilizer	1	\$92.50
5321-17-ORG	Seco Heavy-Duty, Extra-Tall Elevator Tripod - Orange	1	\$398.00
90553-PL	Crain Tri-Max Dual-Clamp Tripod	1	\$369.50
90556	Crain/Seco Elevator Tripod	1	\$716.95



3D Laser Scanner Tripods & Acc.



6704-10	Seco Scanning Spheres Hard Case (Fits 3 Spheres)	1	\$785.00
6704-10-TR	Scanning Sphere, 230mm (Pack of 3) & Case	1	\$999.95
210710	Nedo Industrial Line Elevating 3D Laser Scanner Tripod	1	\$1,395.00

Leica Geosystems Tripods

Part #	Description	Qty	PLI Price
757938	Leica Geosystems TRI 100 Tripod w/ Tilting Head	1	\$79.00
663099	Leica Geosystems LAT195 195cm. (77in.) Crankable Laser Tripod	1	\$525.00



Trimble Tripods

Part #	Description	Qty	PLI Price
28959-00	Trimble Tripod - Adjustable Height 2m for GPS	1	\$782.25





Field Supplies & Accessories

Tribrachs & Adapters

Seco Tribrach Adapters

Part #	Description	Qty	PLI Price
2010-00	Seco Fixed Tribrach Adapter	1	\$35.15
2020-00	Seco Rotating Tribrach Adapter	1	\$42.95
2070-00	Seco Rotating, Swiss-Style Tribrach Adapter	1	\$53.95



SitePro Tribirachs

Part #	Description	Qty	PLI Price
05-1200-BBAG	SitePro Tribirach w/ Op & Padded Bag	1	\$179.00



Prisms

NEW! Leica Geosystems Steep-Angle Prisms

Part #	Description	Qty	PLI Price
2131-01	GRZ101 5/8" x 11" Female to 1/4" x 20" Female Prism Pole Adapter	1	\$12.95
644327	Leica Geosystems GRZ101 360 Degree Mini Prism	1	\$650.00
5187-00	GRZ122 Quick-Release Prism Pole Adapter	1	\$27.95
754384	Leica Geosystems GRZ122 Monitoring Prism	1	\$1,700.00



Seco Prisms

Part #	Description	Qty	PLI Price
6200-11-FOR	Seco 25mm. 0/-30 Mini Prism System w/ Side Vial - Flo. Orange	1	\$112.95
6200-10-FOR	Seco 25mm. 0/-30 Mini Prism System w/ Center Vial - Flo. Orange	1	\$112.95
6422-02-YLB	Seco 5.5in. x 7in. 0/-30 Prism Assembly - Yellow w/ Black	1	\$173.50
6422-02-FLB	Seco 5.5in. x 7in. 0/-30 Prism Assembly - Flo. Yellow w/ Black	1	\$173.50
6422-02-FOB	Seco 5.5in. x 7in. 0/-30 Prism Assembly - Flo. Orange w/ Black	1	\$173.50
6405-01-FOR	Seco 25mm. 0/-30 Stakeout Prism Assembly - Flo. Orange	1	\$189.50
6405-10-FOR	Seco 0/-30 Mini Stakeout Prism w/ Site Cones - Flo. Orange	1	\$189.50
6405-11-FOR	Seco 0/-30 Mini Stakeout Prism Kit - Flo. Orange	1	\$239.50



SitePro Prisms

Part #	Description	Qty	PLI Price
03-1010-O	SitePro 0/-30mm Constant Prism System	1	\$131.50
03-3600	SitePro 360 Degree Robotics Prism	1	\$399.00



Plumb Bobs & Accessories

NEW! Bazooka Plumb Bob

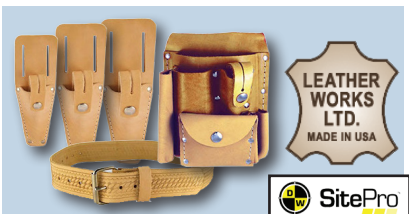
A precision magnetic level for the vertical alignment of columns, walls, etc.
Use on steel, precast, forms, walls, studs & more!

Part #	Description	Qty	PLI Price
BAZOOKABOB	Bazooka Plumb Bob Magnetic Leveling Solution	1	\$369.00



Leather Works/SitePro Plumb Bob Sheaths & Tool Pouches

Part #	Description	Qty	PLI Price
BP-15/25/35	Leather Works 8-10/14-16/18-24 oz Plumb Bob Sheaths	1	\$5.69/\$6/\$6.31
51-10218G	SitePro Leather Gammon Reel and Plumb Bob Sheath	1	\$16.00
BL-2X	Leather Works Belt (36-54)	1	\$19.92
EP-96	Leather Works Surveyors Tool Pouch	1	\$26.54
51-10107	SitePro 7-Pocket Leather Surveyor's Tool Pouch	1	\$30.00
51-10109	SitePro 9-Pocket Leather Professional Contractor's Tool Pouch	1	\$38.00





Field Supplies & Accessories

Plumb Bobs & Accessories (Continued)

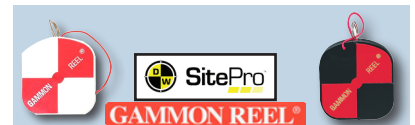
Seco Plumb Bobs & Accessories

Part #	Description	Qty	PLI Price
6000-012	Seco 12oz Solid Brass, Hardened Steel Point Plumb Bob	1	\$19.95
6000-014	Seco 14oz Solid Brass, Hardened Steel Point Plumb Bob	1	\$21.95
6000-016	Seco 16oz Solid Brass, Hardened Steel Point Plumb Bob	1	\$22.95
6000-018	Seco 18oz Solid Brass, Hardened Steel Point Plumb Bob	1	\$24.95
6000-024	Seco 24oz Solid Brass, Hardened Steel Point Plumb Bob	1	\$31.95
6000-002	Seco Universal Plumb Bob Replacement Point	1	\$2.95
5193-00	Seco Topo Point w/ Plumb Bob Tip	1	\$18.95
6030-00	Seco Plumb Bob Prism Mount	1	\$20.95



SitePro Gammon Reels

Part #	Description	Qty	PLI Price
001	6ft. Gammon Reel	1	\$13.50
012/012HV	12ft. Gammon Reel Standard/High-Visibility	1	\$18.75 \$19.95



Datum Markers & Smart Targets

NEW! Rothbucher Systems Datum Markers & Smart Targets

Part #	Description	Qty	PLI Price
RS30	Rothbucher Flat Prism Level Reflective Target 30mm (Red/Grey)	1	\$8.85
RS40	Rothbucher Smart Target w/ Crosshairs (Red/Grey)	1	\$6.54
RS50	Rothbucher Reflective Smart Target, 30mm (Red/Grey)	1	\$9.08
RS60	Rothbucher Reflective Smart Target, 40mm (Red/Grey)	1	\$10.69
RS70/RS71	Rothbucher Smart Target w/ Crosshairs (Red/Grey)	1	\$6.54
RS90	Rothbucher Smart Angle w/ 2 or 3 Reflective Targets, 40mm (Red/Grey)	1	\$26.54
RS80	Rothbucher Smart Angle w/ 2 or 3 Reflective Targets, 40mm (Red/Grey)	1	\$21.92
RS100	Rothbucher Smart Angle Target w/ 4 Crosshairs	1	\$15.31
RS96	Rothbucher Stake-Out Aid w/ Reflective Target Marker (Red/Grey)	1	\$59.92
RSAK80	Rothbucher Angled Adapter w/ Reflective Targets, 40mm (Red/Grey)	1	\$38.38
RSAK130	Rothbucher Angled Adapter w/ Reflective Targets, 30mm (Red/Grey)	1	\$24.23
RSAM80	Rothbucher Steel Thread Adapter & Reflective Targets, 40mm (Red/Grey)	1	\$83.46
RSAMG80	Rothbucher Steel Thread Adapter & Reflective Targets, 40mm (Red/Grey)	1	\$91.15
RS183	Rothbucher Swivelling Target Reflector, 30mm (Red/Grey)	1	\$45.77
RSMP280	Rothbucher 17.5mm Mini-Prism, 30mm Tilting Axis (Red/Grey)	1	\$139.92
RSMP190	Rothbucher 12.7mm Mini-Prism w/ 45mm Tilting Axis (Red/Grey)	1	\$147.62



Prism Poles & Accessories

Trimble/Spectra Precision Prism Poles

Part #	Description	Qty	PLI Price
61586-20	Trimble Inverted Construction Layout Rod w/ Metal Punch	1	\$435.00
43169-10	Trimble 2m. Carbon Fiber Pole	1	\$235.00
43169-30	Trimble 2.5m. Carbon Fiber Telescopic Pole	1	\$284.00
51003007	Trimble 2.6m. Standard Robotic Telescopic Pole	1	\$379.00
43169-00	Trimble 2m. Carbon Fiber Pole w/ Bipod	1	\$470.00
43169-20	Trimble 2.5m. Carbon Fiber Telescopic Pole w/ Bipod	1	\$535.00
89848-00	Trimble 2.0m. Carbon Fiber Pole w/ Quick Release Adapter	1	\$633.00





Field Supplies & Accessories

Prism Poles & Accessories (Continued)

Seco Prism Poles

Part #	Description	Qty	PLI Price
5160-02-WOR	Seco 4ft. Range Pole - Orange & White	1	\$27.95
5150-02-WOR	Seco 12ft. Range Pole - Orange & White	1	\$78.50
5530-10/5540-10	Seco 8.5ft. Dual-Grad., Prism Pole Basic/Plus	1	\$92.65/\$168.25
5500-23	Seco 2.7-5.1FT 115MM Mini Prism Pole	1	\$180.95
5540-20	Seco 12ft. Dual-Grad., Ultralite Prism Pole w/ TLV Lock	1	\$199.00
5500-21	Seco 12ft. TLV Prism Pole - Red & White	1	\$195.00
5540-30	Seco 15ft. Dual-Grad., Ultralite Prism Pole w/ TLV Lock	1	\$297.00
5125-00-YEL	Seco 2m. Two-Piece GPS Rover Rod - Standard Yellow	1	\$95.50
5125-06-YEL	Seco 2m. GPS Rover Rod w/ Cable Slot - Standard Yellow	1	\$125.95
5125-20-YEL-GT	Seco 2m. Snap-Lock Rover Rod w/ Outer "GT" Grad. - Standard Yellow	1	\$129.95
5512-13-FLY-GM	Seco GPS Pole, 2.6M, CM, TLV, 0MM, LP	1	\$175.50
5512-14-FOR-GT	Seco Robotic Pole, 8.5ft, CM/.01, TLV, 135MM, LP	1	\$175.50
5128-20-GT	Seco 2m. Snap-Lock Rover Rod w/ Outer "GT" Grad.	1	\$312.00
5145-00-FLY	Seco 25cm. Prism Pole Extension/1.25in. OD - Flo. Yellow	1	\$34.00
5132-00-ACL	Seco 6in. Prism Pole Extension/1in. OD	1	\$27.50
5130-00-FLY	Seco 1ft. Prism Pole Extension/1.25in. OD - Flo. Yellow	1	\$29.50
5110-00-RED	Seco 4ft. Prism Pole Extension/1.25in. OD - Red	1	\$35.95
5010-00-RED	Seco 1ft. Mini Stakeout Prism Pole - Red	1	\$73.75
5530-30	Seco 15ft. Twist-Lock Style Construction Series Prism Pole	1	\$139.50
5214-01	Seco Gardner Rod Rest for 1.25in. Pole	1	\$215.00
5125-L-PLI-KIT	Seco 2m. Prism Pole, Pole Bag & Bipod KIT	1	\$446.50



Bipods

Seco/SitePro Bipods & Prism Tripods

Part #	Description	Qty	PLI Price
07-4360	SitePro Thumb-Release Aluminum Bipod	1	\$142.00
5217-04-YEL	Seco Original Thumb Release Bipod - Yellow	1	\$147.00
5217-05-YEL	Seco Mini Thumb Release Bipod - Yellow	1	\$145.00
5214-00	Seco Alligator Clamp Prism Pole Tripod	1	\$49.95
5218-15-ABK	Seco Mini Simple Tripod w/ 12in. Legs	1	\$114.25
5218-02-YEL	Seco Original Thumb Release Tripod - Yellow	1	\$194.50



Hand Levels

Stabila Smart Levels - Voted Number 1 in Both Quality and Accuracy!

Part #	Description	Qty	PLI Price
36524/ 36548	Stabila 24in./48in. IP65 Digital TECH Level w/ Case	1	\$246.99/\$278.50
37424/37448	Stabila 24in./48in. Type 196 Level	1	\$74.95/\$119.95
41048/ 41072	Stabila 48in./72in. R-Beam Series Level	1	\$135.50/\$203.95
34610/35712	Stabila 6ft.-10ft./7ft.-12ft Magnetic Plate Level 2	1	\$341.99/\$349.00



Seco Hand Levels

Part #	Description	Qty	PLI Price
4050-01	Seco Abney Level	1	\$45.95
4040-60	Seco 1x Hand Level (5in.) w/ 1x External Vial & Stadia	1	\$79.95
4040-05/4040-30	Seco 1x/2x Hand Level (5-7in. ext.) w/ 1x External Vial & Stadia	1	\$98.50/\$109.95
4200-00/4300-00	Seco 2x Hand Level (5-7in. ext.) w/ 2x External Vial & Stadia	1	\$106.50/114.95



Sokkia Hand Levels

Part #	Description	Qty	PLI Price
804260	Sokkia 5x Hand Level	1	\$148.75
804745	Sokkia 6-3/8" Topographic Abney Level w/ 2 Arcs	1	\$190.95
804755	Sokkia 5x Abney Level w/ Stadia	1	\$260.00





Field Supplies & Accessories

Automatic Levels, Transits & Theodolites

David White/SitePro Builders' & Utility Transits

Part #	Description	Qty	PLI Price
46-D8871 (LT8-300P)	David White/SitePro Builders' Transit - 26x Mag. w/ Optical Plum. & Case	1	\$856.00
46-D8872	David White/SitePro Builders Transit - 26x Mag. w/ Laser Plum. & Case	1	\$895.00
46-D8879	David White/SitePro Utility Transit - 26x Mag. w/ Laser Plum. & Case	1	\$920.00
46-D8877 (LT8-300LTU)	David White/SitePro Utility Transit - 26x Mag. w/ Optical Plum. & Case	1	\$920.00



Leica Geosystems Automatic & Precision Levels

Part #	Description	Qty	PLI Price
840381	Leica NA320 20x Auto-Level w/ 360° Circle	1	\$219.00
840382	Leica NA324 24x Auto-Level w/ 360° Circle	1	\$249.00
840383	Leica NA332 32x Auto-Level w/ 360° Circle	1	\$299.00
352036	Leica NA2 32x (Optional 40x) Universal Automatic Level w/ Accessories	1	\$3,300.00
352038	Leica NAK2 Universal Automatic Level w/ Horizontal 360° Circle	1	\$4,250.00



Nikon/Spectra Precision Automatic Levels & Theodolites

Part #	Description	Qty	PLI Price
AL-NIKON-AX-2S	Nikon Model AX-2S 20x Auto-Level w/ 360° Circle, Plumb Bob & Case	1	\$295.00
AL-NIKON-AC-2S	Nikon Model AC-2S 24x Auto-Level w/ 360° Circle, Plumb Bob & Case	1	\$360.00
AL-NIKON-AP-8	Nikon Model AP-8 28x Auto-Level w/ 360° Circle, Plumb Bob & Case	1	\$630.00
AL-NIKON-AE-7	Nikon Model AE-7 30x Auto-Level w/ Plumb Bob & Case	1	\$1,290.00
AL-NIKON-AS-2	Nikon Model AS-2 34x Auto-Level w/ Plumb Bob & Case	1	\$1,685.00
NIKON-NE-100	Nikon 10" Construction Theodolite w/ Case	1	\$2,425.00
NIKON-NE-101	Nikon 7" Construction/Survey Theodolite w/ Case	1	\$2,635.00
DET-2	Spectra Precision DET-2 2" Construction Theodolite	1	\$1,195.00



Nails & Fasteners

MagNails, Spikes, Hubs & Stake Tacks

Part #	Description	Qty	PLI Price
24750	3/4in. x 1/8in. Mag Nails	100	\$6.50
241000	1in. x 5/32in. Mag Nails	100	\$8.25
241250	1 1/4in. x 3/16in. Mag Nails	100	\$11.75
241500	1 1/2in. x 1/4in. Mag Nails	100	\$15.95
242000	2in. x 1/4in. Mag Nails	100	\$18.95
242500	2 1/2in. x 1/4in. Mag Nails	100	\$22.95
253MAGSPIKE	3/8in. x 3in. Mag Spikes	25	\$30.50
254MAGSPIKE	3/8in. x 4 1/2in. Mag Spikes	25	\$37.50
256MAGSPIKE	3/8in. x 6in. Mag Spikes	20	\$37.95
258MAGSPIKE	3/8in. x 8in. Mag Spikes	20	\$43.95
23MAG-HUB4	3/16in. x 4in. Mag Hubs	30lb.	\$71.95
23MAG-HUB6	1/4in. x 6in. Mag Hubs	30lb.	\$71.95
23MAG-HUB8	1/4in. x 8in. Mag Hubs	30lb.	\$71.95
25456855	Stake Tacks - 1lb. Box	1lb.	\$10.25
2545644	Stake Tacks - 5lb. Box	5lb.	\$45.50



Ask About Our Lunch & Learn Series!

Positioning technology is constantly evolving, and we're on the cutting edge to bring you the best available to get your jobs done efficiently, effectively, and accurately. Between all of the hardware, software, and techniques, it can be tough to keep up and keep working. That's why PLI is now offering our "Lunch & Learn" series!

■ 30-60 Minute Technical Presentations

■ Tailored to Your Interests

■ 1 PDH Available

Call 724.266.1600 or Email PLI@laserinst.com to Learn More!



Field Supplies & Accessories

Tape Measures & Measuring Wheels

PIPE-MIC II Pipe Invert Measurement Solution

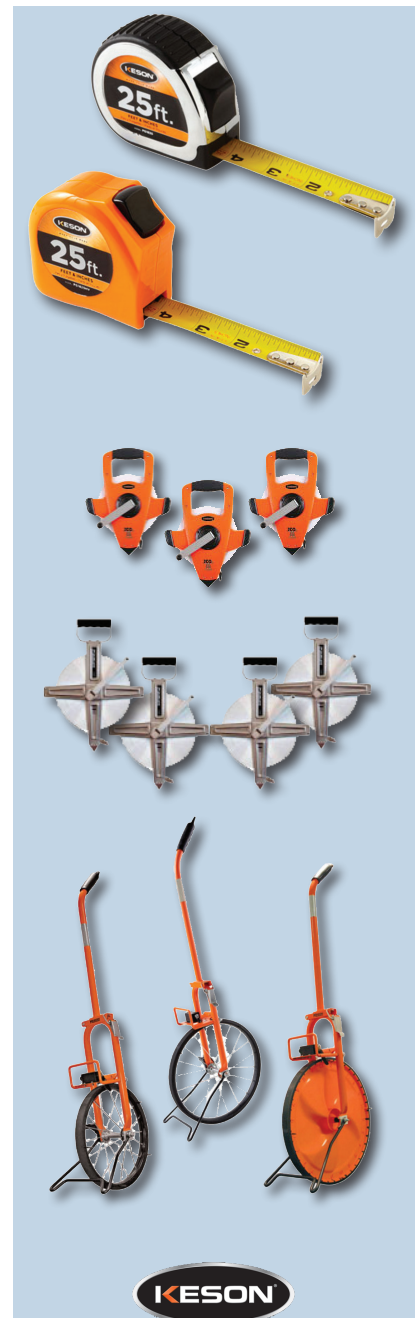
- Measurements are more accurate because you are measuring with a vertical plumb rod.
- Made for 25' SVR, USL rods and our new double sided PIPE-MIC II rod.
- Made of lightweight (two pounds) non-rusting aircraft aluminum.
- No tools needed to attach to rod. *Slides on and off in seconds.
- Slices through material at bottom of pipe for accurate invert and pipe diameter measurement.

Part #	Description	Qty	PLI Price
1702PM2	PIPE-MIC II Pipe Invert Measurement Solution w/ Zero and 1ft Vertical Offset Positions	1	\$215.00



Keson Tape Measures & Measuring Wheels

Part #	Description	Qty	PLI Price
PGPRO1812V	Keson 12ft. Nylon-Coated, Stainless Steel Housing, Hook-End Short Tape (ft., in., 1/8, 1/16 (1/32 first 12in.) Blade Type A1	1	\$7.00
PGT1816V	Keson 16ft., Nylon-Coated, Hook-End Short Tape (ft., in., 1/8, 1/16 (1/32 first 12in.), Blade Type B1	1	\$7.50
PGT181025V	Keson 25ft., Nylon-Coated, Stainless Steel Housing, Hook-End Short Tape (ft., 1/10, 1/100, ft., in., 1/8, 1/16) Blade Type B4	1	\$10.00
PGT1825V	Keson 16ft., Nylon-Coated, Hook-End Short Tape (ft., in., 1/8, 1/16 (1/32 first 12in.) Blade Type B1	1	\$10.00
PG1025	Keson 25ft., Nylon-Coated, Hook-End Short Tape (ft., 1/10, 1/100) Blade Type B2	1	\$11.95
PGPRO1816V	Keson 16ft., Nylon-Coated, Stainless Steel Housing, Hook-End Short Tape (ft., in., 1/8, 1/16 (1/32 first 12in.) Blade Type B1	1	\$10.00
PGPRO1825	Keson 25ft., Nylon-Coated, Stainless Steel Housing, Hook-End Short Tape (ft., in., 1/8, 1/16 (1/32 first 12in.) Blade Type B1	1	\$14.00
PGPRO1830	Keson 30ft., Nylon-Coated, Stainless Steel Housing, Hook-End Short Tape (ft., in., 1/8, 1/16 (1/32 first 12in.) Blade Type B1	1	\$16.00
OTR18100/ OTR10100	Keson 100ft., Standard Rewind , Open-Type Reel, Ultra-Glass Blade, Hook-End, Fiberglass Long Tape (in./10ths.) Blade Type F1/F2	1	\$18.95
OTR18200/ OTR10200	Keson 200ft., Standard Rewind , Open-Type Reel, Ultra-Glass Blade, Hook-End, Fiberglass Long Tape (in./10ths.) Blade Type F1/F2	1	\$32.95
OTR1810300/ OTR10300	Keson 300ft., Standard Rewind , Open-Type Reel, Ultra-Glass Blade, Hook-End Fiberglass Long Tape (in./10ths.) Blade Type F1/F2	1	\$40.00/ \$40.00
OTRS1810100E	Keson 100ft., High-Speed (3x) , Ring-End, FGL. Long Tape (in./10ths.)	1	\$18.50
OTRS1810200E	Keson 200ft., High-Speed (3x) , Ring-End, FGL. Long Tape (in./10ths.)	1	\$29.07
OTRS1810300E	Keson 300ft., High-Speed (3x) , Ring-End, FGL. Long Tape (in./10ths.)	1	\$36.35
NR10100/ NR10100E	Keson 100ft., Standard Rewind , Nylon-Reinforced Steel, Ring-End Long Tape (ft., 1/10, 1/100) Blade Type E19/E2	1	\$46.69/ \$46.69
NR10200H/ NR10200E	Keson 20ft., Standard Rewind , Nylon-Reinforced Steel, Ring-End Long Tape (ft., 1/10, 1/100) Blade Type E19/E2	1	\$73.00
NR30M	Keson 30m., Metric, Double-Nylon Coated Steel, Ring-End Long Tape (m., cm., mm.) Blade Type E17	1	\$46.00
NRS18M100	Keson 100ft./60m., High-Speed (3x) , Nylon-Reinforced Steel, Hook-End Long Tape (ft., in., 1/8, m., cm., mm.) Blade Type E1 & E15	1	\$56.00
NRS18M200	Keson 200ft./60m., High-Speed (3x) , Nylon-Reinforced Steel, Hook-End Long Tape (ft., in., 1/8, m., cm., mm.) Blade Type E1 & E15	1	\$89.93
NRS18300	Keson 300ft., High-Speed (3x) , Nylon-Reinforced Steel, Hook-End Long Tape (ft., in., 1/8) Blade Type E1	1	\$121.29
SNR18100	Keson 100ft., Stainless-Steel Housing, Double Nylon-Coated Steel, Hook-End Long Tape (ft., in., 1/8)	1	\$65.56
SNR18200	Keson 200ft., Stainless-Steel Housing, Double Nylon-Coated Steel, Hook-End Long Tape (ft., in., 1/8)	1	\$98.35
SNR10300	Keson 300ft., Stainless-Steel Housing, Double Nylon-coated Steel, Hook-End Long Tape (ft., 1/10, 1/100)	1	\$151.62
SNR18300	Keson 300ft., Stainless-Steel Housing, Double Nylon-Coated Steel, Hook-End Long Tape (ft., in., 1/8)	1	\$151.62
MP301	Keson 11-1/2in., 3ft. Measuring Wheel (ft.)	1	\$119.00
RRT12	Keson 3ft. Measuring Wheel (ft./in.)	1	\$124.79
RRT1210	Keson 3ft. Measuring Wheel (ft./10ths.)	1	\$124.79
MP401	Keson 15-1/2in., 4ft., Spoked Measuring Wheel (ft.)	1	\$139.00





Field Supplies & Accessories

Tape Measures & Measuring Wheels (Continued)

Lufkin Tape Measures

Part #	Description	Qty	PLI Price
PHV1312D	Lufkin 3/4in. x 12ft. Engineer Power Tape	1	\$10.50
PHV1425D	Lufkin 1in. x 25ft. Engineer Power Tape	1	\$14.85
P2133D	Lufkin 1in. x 33ft. Engineer Power Tape	1	\$23.35
Y1276	Lufkin 1/4in. x 100ft. Peerless Yellow Clad Tape (ft./in.)	1	\$221.50
C1276D	Lufkin 1/4in. x 100ft. Peerless Chrome Clad Engineer Tape	1	\$282.00
Y1278	Lufkin 1/4in. x 200ft. Peerless Yellow Clad Tape (ft./in.)	1	\$326.85
C1278D	Lufkin 1/4in. x 200ft. Peerless Chrome Clad Engineer Tape	1	\$473.00
1066D	Lufkin 5/8in. x 6ft. Engineer Wooden Folding Rule	1	\$24.45
1066DM	Lufkin 5/8in. x 2m. Engineer Wooden Rule	1	\$23.25



Rolatape Measuring Wheels

Part #	Description	Qty	PLI Price
32-300S	Rolatape 11 1/4in. Single Measuring Wheel	1	\$90.50
32-400	Rolatape 15 1/2in. Single Measuring Wheel	1	\$122.50
32-415	Rolatape 15 1/2in. Single Measuring Wheel	1	\$127.50



Rebar & Rebar Caps

Rebar/Iron Pins

Part #	Description	Qty	PLI Price
ZSE-5815REB	5/8in x 15in Rebar	16	\$16.50
015812IB	5/8in x 12in Rebar	20	\$16.50
ZSE-1230REB	1/2in x 30in Rebar	24	\$32.00
ZSE-5818REB	5/8in x 18in Rebar	25	\$32.92
ZSE-5830REB	5/8in x 30in Rebar	24	\$49.50
ZSE-3430REB	3/4in x 30in Rebar	16	\$49.50



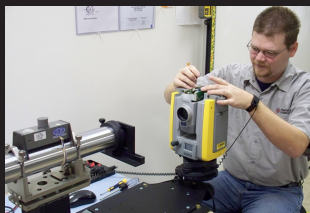
Note: Rebar pricing may vary.

Rebar Caps - Custom Imprints Available!

Part #	Description	Qty	PLI Price
PLM-4-O-100	1/2in. Rebar Caps, 100Pk - Orange	1	\$34.00
PLM-4-Y-100	1/2in. Rebar Caps, 100Pk - Yellow	1	\$34.00
PLM-5-O-100	5/8in. Rebar Caps, 100Pk - Orange	1	\$36.99
PLM-5-Y-100	5/8in. Rebar Caps, 100Pk - Yellow	1	\$36.99



Excellence in Service Repair



We tackle annual cleaning and calibrations, full-on restorations, warranty repairs and EDM baseline testing, drawing on an extensive parts inventory.

Schedule a Tour of our Service Centers!

Pittsburgh, PA: 724.266.1600

Columbus, OH: 614.759.1000

Cincinnati, OH: 513.539.0022

Akron, OH: 330.633.4900





Field Supplies & Accessories

Marking Paint

Aervoe Marking Paint

Part #	Description	Qty	PLI Price
255	Aervoe Construction Marking Paint - White	12	\$37.50
246	Aervoe Construction Marking Paint - Flo. Red	12	\$37.50
258	Aervoe Construction Marking Paint - Yellow	12	\$37.50
247	Aervoe Construction Marking Paint - Flo. Orange	12	\$37.50
249	Aervoe Construction Marking Paint - Flo. Pink	12	\$37.50
248	Aervoe Construction Marking Paint - Flo. Green	12	\$37.50
250	Aervoe Construction Marking Paint - Blue	12	\$37.50
220	Aervoe Survey Marking Paint - Flo. Red	12	\$45.55
226	Aervoe Survey Marking Paint - Flo. Yellow	12	\$45.55
222	Aervoe Survey Marking Paint - Flo. Orange	12	\$45.55
229	Aervoe Survey Marking Paint - Flo. Pink	12	\$45.55
224	Aervoe Survey Marking Paint - Flo. Green	12	\$45.55
227	Aervoe Survey Marking Paint - Flo. Blue	12	\$45.55
245	Aervoe 32in. Marking Paint Stick	1	\$20.10
710/720	Aervoe Solvent-Based Striping Paint - Traffic White Traffic Yellow	1	\$55.35
790/791	Aervoe Water-Based Striping Paint - Traffic White Traffic Yellow	1	\$58.65
800A	Aervoe Vers-A-Striper Pavement Paint Striping Cart	1	\$84.59
801A	Aervoe Vers-A-Striper Turf & Durt Paint Striping Cart	1	\$92.81



Lumber Crayons & Paint Sticks

Dixon Redimark Markers

Part #	Description	Qty	PLI Price
2887170	Dixon 6in. Aluminum Barrel Markers - Black	1Pk	\$19.95



Lumber Crayons & Paint Markers

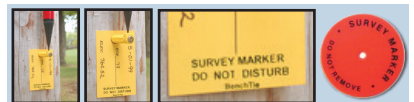
Part #	Description	Qty	PLI Price
10367	Lumber Crayons - Black	12	\$7.95
10365	Lumber Crayons - Red	12	\$7.95
10368	Lumber Crayons - Yellow	12	\$7.95
10366	Lumber Crayons - Blue	12	\$7.95
10298	Paint Markers - White	12	\$46.46
10297	Paint Markers - Red	12	\$46.46
10299	Paint Markers - Yellow	12	\$46.46



Survey Benchties & Hub Discs

Survey Benchties & Hub Discs

Part #	Description	Qty	PLI Price
24HUBDISC	Discs are in packages of 100 - Hole 1/8"	1	\$13.95
2700Y	Yellow Benchties	1	\$65.95



Brass Survey Markers

Brass Survey Markers

Part #	Description	Qty	PLI Price
C/M-1.5B	1 1/2in. Flat Top Brass Marker	1	\$6.89
C/M-2B	2in. Flat Top Brass Marker	1	\$12.15





Field Supplies & Accessories

Brass Survey Markers (Continued)

SitePro Survey Markers - Free Numerical Stamping Available!

Part #	Description	Qty	PLI Price
19-700	SitePro 1 3/8in. (34.9mm.) Brass Survey Marker - Flat Head	1	\$8.00
19-701	SitePro 2in. (50.8mm.) Brass Survey Marker - Flat Head	1	\$8.50
19-702	SitePro 2 1/2in. (63.5mm.) Brass Survey Marker - Flat Head	1	\$10.00
19-703	SitePro 3" (76.2mm.) Brass Survey Marker - Flat Head	1	\$10.50
19-705	SitePro 2in. (50.8mm.) Brass Survey Marker - Domed Head	1	\$11.50
19-706	SitePro 2 1/2in. (63.5mm.) Brass Survey Marker - Domed Head	1	\$12.50
19-707	SitePro 3in. Dome Brass Survey Marker - Domed Head	1	\$16.50



Wood Hubs, Flats, Lath & Stakes

Wood Hubs, Flats, Lath & Stakes - Big Project? Call for Quantity Discounts!

Part #	Description	Qty	PLI Price
ZSE2209H	2in. x 2in. x 9in. Wood Hubs	25	\$12.95
ZSE2212H	2in. x 2in. x 12in. Wood Hubs	25	\$13.95
ZSE2218	2in. x 2in. x 18in. Wood Hubs	25	\$19.50
ZSE1224F	1in. x 2in. x 24in. Wood Flats	25	\$16.25
ZSE18F	1in. x 2in. x 18in. Wood Flats	50	\$26.95
ZSE36L	1/2in. x 1 1/2in. x 36in. Wood Lath	50	\$29.95
ZSE36L	1/2in. x 1 1/2in. x 36in. Wood Lath (FULL PALLET) 60 BUNDLES	3,000	PLEASE CALL
ZSE48L	1/2in. x 1 1/2in. x 48in. Wood Lath	50	\$34.25
ZSE48L	1/2in. x 1 1/2in. x 48in. Wood Lath (FULL PALLET) 48 BUNDLES	2,400	PLEASE CALL



Drafting Supplies

Alvin Pentel Pencils, Scales & Templates

Part #	Description	Qty	PLI Price
P205-A	Alvin Pentel Sharp 0.5mm. Black Barrel Drafting Pencil	1	\$5.50
P205-B	Alvin Pentel Sharp 0.5mm. Red Barrel Drafting Pencil	1	\$5.50
P205-D	Alvin Pentel Sharp 0.5mm. Green Barrel Drafting Pencil	1	\$5.50
P207-C	Alvin Pentel Sharp 0.7mm. Blue Barrel Drafting Pencil	1	\$5.50
P209-G	Alvin Pentel Sharp 0.9mm. Yellow Barrel Drafting Pencil	1	\$5.50
3010-1	Alvin 6in. Silver Aluminum Triangular Scale - Architect	1	\$4.95
3210-1	Alvin 6in. Silver Aluminum Triangular Scale - Engineer	1	\$4.95
40MTS	Alvin 40 Series 4in. Mini Hardwood Triangular Scale - Architect	1	\$12.95
41MTS	Alvin 40 Series 4in. Mini Hardwood Triangular Scale - Engineer	1	\$12.95
266P	Alvin 6in. White Plastic Flat Architect Scale	1	\$11.63
245B	Alvin 12in. Bamboo Engineer Triscale	1	\$23.95
41T	Alvin Timely Small Shapes Template	1	\$1.50
TD116	Alvin All-Purpose Template	1	\$7.50



ALL the Field Supplies You Need, Fast
WWW.LASERINST.COM

Place Your Order Today & Get Your Project Moving!

• MagNails, MagSpikes & MagHubs	• Measuring Tapes & Wheels
• Safety Vests, Glasses & Hard Hats	• Rolled Flagging, Wire Flagging & Whiskers
• Paint Markers, Lumber Crayons & Templates	• Tripods, Bipods & Grade Rods
• Field Bags-Lath, Tripod & Equip. Backpacks	• Pallet Pricing Available on Wood Lath/Stakes

LOCAL-AREA PICKUP AND DELIVERY FOR SALES, RENTALS AND SERVICE*!

*LIMITED DELIVERY AREAS. CALL 724.266.1600 FOR DETAILS.

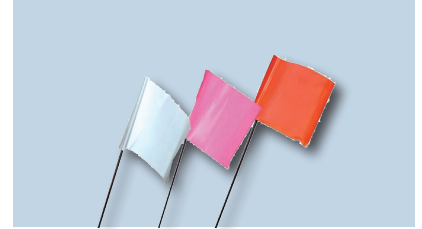


Field Supplies & Accessories

Flagging & Whiskers

Wire Flags

Part #	Description	Qty	PLI Price
4521W-I	4x5x21in. Wire Flags - White	100	\$8.78
4521Y-I	4x5x21in. Wire Flags - Yellow	100	\$8.78
4521B-I	4x5x21in. Wire Flags - Blue	100	\$8.78
4521R-I	4x5x21in. Wire Flags - Red	100	\$8.78
4521PG-I	4x5x21in. Wire Flags - Pink	100	\$8.78
4521O-I	4x5x21in. Wire Flags - Orange	100	\$8.78



Mutual Industries Aerial Flagging

Part #	Description	Qty	PLI Price
16006-10-12 (-24)	Mutual Industries 12in. (24in) Aerial Flagging - HD White	1	\$31.85 (\$61.15)
15500-0-48/ 15000-0-48	Mutual Industries 48in. Aerial Target - Bullseye/Iron Cross	1	\$16.46



Presco Rolled Flagging & Whiskers

Part #	Description	Qty	PLI Price
TXW1500	Presco Rolled Flagging - Standard White	12	\$17.50
TXR1300	Presco Rolled Flagging - Standard Red	12	\$17.50
TXY1400STD	Presco Rolled Flagging - Standard Yellow	12	\$17.50
TXG1300	Presco Rolled Flagging - Standard Green	12	\$17.50
TXB1000STD	Presco Rolled Flagging - Standard Blue	12	\$17.50
TXPP1700	Presco Rolled Flagging - Standard Purple	12	\$17.50
TXRG1600	Presco Rolled Flagging - GLO Red	12	\$17.50
TXYG1400	Presco Rolled Flagging - GLO Yellow	12	\$17.50
TXOG1200	Presco Rolled Flagging - GLO Orange	12	\$17.50
TXPG1300	Presco Rolled Flagging - GLO Pink	12	\$17.50
TXLG1100	Presco Rolled Flagging - GLO Lime	12	\$17.50
TXBG1000	Presco Rolled Flagging - GLO Blue	12	\$17.50
SWO	Presco Rolled Flagging - White Orange Striped	12	\$19.95
SWB (SWR)	Presco Rolled Flagging - White Blue Striped (White Red Striped)	12	\$19.80
SYBK (SWBK)	Presco Rolled Flagging - Black Yellow Striped (Black White Striped)	12	\$19.80
SOBK (SOGBK)	Presco Rolled Flagging - Black Orange Striped (Black GLO Orange)	12	\$19.80
SPGW	Presco Rolled Flagging - White Pink Striped	12	\$22.15
ARW1500	Presco Rolled Flagging - Arctic GLO White	12	\$22.50
ARRG1600	Presco Rolled Flagging - Arctic GLO Red	12	\$22.50
ARYG1400/ AROG1200	Presco Rolled Flagging - Arctic GLO Yellow / GLO Orange	12	\$22.50
ARPG1300	Presco Rolled Flagging - Arctic GLO Pink	12	\$22.50
ARLG1100/ ARBG1000	Presco Rolled Flagging - Arctic GLO Lime / GLO Blue	12	\$21.05 /\$22.50
WHIS6W1000- (100 PK)	Presco 6in. Whisker (100 Pack) - White	100	\$12.15
WHIS6Y1000- (100 PK)	Presco 6in. Whisker (100 Pack) - Yellow	100	\$12.15
WHIS6OG1000- (100 PK)	Presco 6in. Whisker (100 Pack) - GLO Orange	100	\$12.15
WHIS6PG1000- (100 PK)	Presco 6in. Whisker (100 Pack) - GLO Pink	100	\$12.15
WHIS6G1000- (100 PK)	Presco 6in. Whisker (100 Pack) - Green	100	\$12.15
WHIS6B1000- (100 PK)	Presco 6in. Whisker (100 Pack) - Blue	100	\$12.15



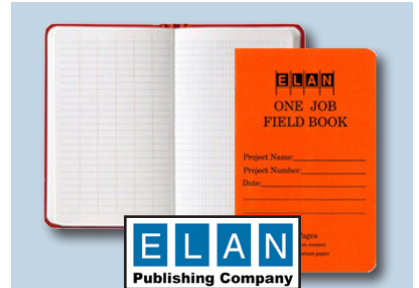


Field Supplies & Accessories

Field Books & Binders

Elan Field Books & Binders

Part #	Description	Qty	PLI Price
E64-8x4F/ E64-8x8F	Elan Field Book Filler	1	\$3.69
E64-8x4S	Elan Economy Field Book	1	\$4.50
E64-8x4WB	Elan Field Book (425) - Wire Bound	1	\$4.50
E64-8x4B-I	Elan Book - Single	1	\$7.15
E64-4x4B-I	Elan Field Book - Single	1	\$7.15
E64-64	Elan Level Book Individual	1	\$7.15
323	Elan 2in. Standard 6-Ring Binder w/ Poly Cover	1	\$8.49
E64-64PK/E64-8x4B	Elan Level Book (6 Pack)	6	\$42.90



Rite in the Rain Field Books & Binders

Part #	Description	Qty	PLI Price
200-RB	Rite in the Rain Field Ring Binder	1	\$13.79
302	Rite in the Rain Transit Pattern Refill (100)	1	\$13.95
300F/310F	Rite in the Rain Transit/Level Pattern Bound Book	1	\$22.95/\$22.95



Sokkia Field Books

Part #	Description	Qty	PLI Price
815200/-(6PK)	Sokkia 8x4 Field Book/6 Pack	1/6	\$6.15/\$36.85
815260	Sokkia Field Book	1	\$7.15
815255/-(6PK)	Sokkia 64-64 Level Books/6 Pack	1/6	\$7.15/\$42.83
815230	Sokkia Engineers Field Book	1	\$8.51



Carrying Cases & Bags

Hard Protective Cases

Part #	Description	Qty	PLI Price
915-1004	Hard Case, Medium - 915 Yellow 13.8" L x 9.3" W x 6.2" H	1	\$99.95
925-1004	Hard Case, Large - 925 Yellow 17" L x 11.8" W x 6.4" H	1	\$132.50
940-1004	Hard Case, Extra Large - 940 Yellow 20" L x 14" W x 8" H	1	\$163.95



Seco Field Bags

Part #	Description	Qty	PLI Price
8098-00-ORG	Seco Spray Can Holster Case	1	\$10.75
8098-10-ORG	Seco Spray Can Holder w/ Pockets	1	\$18.85
8143-22-FLY	Seco Cell Phone/GPS Case	1	\$14.35
8070-00-ORG	Seco Single Prism Bag	1	\$34.15
8080-00-ORG	Seco Triple Prism Bag (9in. x7in. x2in.)	1	\$37.75
8081-00-ORG	Seco Jumbo Prism Bag	1	\$52.15
8130-00-ORG	Seco Extra Tall Prism Bag	1	\$54.85
8082-00-ORG	Seco Super Jumbo Padded Prism Bag, Orange	1	\$61.15
8071-00-ORG	Seco Optical Plummet Tribrach Case (6in. x 6in. x 2in.)	1	\$34.15
8100-00-ORG	Seco 8in. ID x 36in. Lath Bag w/ Pocket	1	\$35.75
8101-00-ORG	Seco 8in. ID x 48in. Lath Bag w/ Pocket	1	\$41.35
8103-20-ORG	Seco 24in. Heavy Duty Lath Bag w/ Pockets	1	\$44.95
8100-20-ORG	Seco 36in. Heavy Duty Rhinotek Lath Bag	1	\$44.95
8101-20-ORG	Seco 48in. Heavy Duty Rhinotek Lath Bag	1	\$48.55
8150-20-ORG	Seco Heavy Duty Tripod Bag	1	\$59.35
8154-11-ORG	Seco Large Tripod Bag	1	\$55.75
8180-20-ORG	Seco Heavy Duty Tripod/Prism Pole Bag	1	\$55.75
8154-12-ORG	Seco Heavy Duty GPS Tripod Bag	1	\$95.35
8120-30-ORG	Seco Back Pack Total Station Bag	1	\$247.45
8120-40-ORG	Seco 500mm. Total Station RuckSack	1	\$267.25





Field Supplies & Accessories

Safety Glasses

Lift Safety Glasses

Part #	Description	Qty	PLI Price
ESR-6ST	Lift Strobe Safety Glasses - SilverSmoke	1	\$8.00
ESR-12CFST	Lift Strobe Safety Glasses - CamoSmoke	1	\$8.50
ESE-9M	Lift Sectorlite Safety Glasses - Mirror	1	\$6.50
EFR-6ST	Lift Flanker Safety Glasses - Smoke	1	\$7.00
EQT-12KST	Lift Quest Safety Glasses - BlackSmoke	1	\$6.50
EQT-12CFST	Lift Quest Safety Glasses - CamoSmoke	1	\$7.00



Hard Hats

Lift Hard Hats

Part #	Description	Qty	PLI Price
HBFE-7W	Lift Briggs Full Brim Hard Hat - White	1	\$14.60
HBFE-7L	Lift Briggs Full Brim Hard Hat - Yellow	1	\$14.60
HBSE-7W	Lift Briggs Short Brim Hard Hat - White	1	\$12.99
HBSE-7L	Lift Briggs Short Brim Hard Hat - Yellow	1	\$12.99
HDF-15NG	Lift Dax Fiber Resin Full Brim Hard Hat - Natural	1	\$84.62
HDF-15WG	Lift Dax Fiber Resin Full Brim Hard Hat - Gloss White	1	\$84.62
HDFM-17KG	Lift Dax Carbon Fiber Full Brim Hard Hat - Matte Black	1	\$146.00



MSA Hard Hats

Part #	Description	Qty	PLI Price
24202/24206/24201	MSA V-Gard Hard Hat - White / Yellow / Orange	1	\$22.39



Safety Vests

Seco Safety Vests

Part #	Description	Qty	PLI Price
8292-50-FLY	Seco Class 2 Safety Vest, L - Flo. Yellow	1	\$23.35
8265-42-FLY	Seco Class 2 ANSI Survey Vest, S - Flo. Yellow	1	\$111.25
8265-42-FOR	Seco Class 2 ANSI Survey Vest, S - Flo. Orange	1	\$111.25
8265-46-FLY	Seco Class 2 ANSI Survey Vest, M - Flo. Yellow	1	\$111.25
8265-46-FOR	Seco Class 2 ANSI Survey Vest, M - Flo. Orange	1	\$111.25
8265-50-FLY	Seco Class 2 ANSI Survey Vest, L - Flo. Yellow w/ Stripe	1	\$111.25
8265-50-FOR	Seco Class 2 ANSI Survey Vest, L - Flo. Orange w/ Stripe	1	\$111.25
8265-54-FLY	Seco Class 2 ANSI Survey Vest, XL - Flo. Yellow	1	\$111.25
8265-54-FOR	Seco Class 2 ANSI Survey Vest, XL - Flo. Orange	1	\$111.25
8265-58-FLY	Seco Class 2 ANSI Survey Vest, XXL - Flo. Yellow	1	\$116.50
8265-58-FOR	Seco Class 2 ANSI Survey Vest, XXL - Flo. Orange	1	\$116.50
8265-62-FLY	Seco Class 2 ANSI Survey Vest, XXXL - Flo. Yellow w/ Stripe	1	\$116.50
8365-46-FLY	Seco Class 3 ANSI Survey Vest, M - Flo. Yellow	1	\$111.25
8365-50-FLY	Seco Class 3 ANSI Survey Vest, L - Flo. Yellow	1	\$111.25
8365-54-FLY	Seco Class 3 ANSI Survey Vest, XL - Flo. Yellow	1	\$111.25
8365-58-FLY	Seco Class 3 ANSI Survey Vest, XXL - Flo. Yellow	1	\$142.00



SitePro Safety Vests

Part #	Description	Qty	PLI Price
23-500-L	SitePro Light Weight Construction Vest, L - Lime	1	\$11.50
23-500-XL	SitePro Light Weight Construction Vest, XL - Lime	1	\$11.50
23-500-XXL	SitePro Light Weight Construction Vest, XXL - Lime	1	\$12.30
23-550-L	SitePro Survey Vest w/ Pockets, L - Lime	1	\$50.75
23-550-XL	SitePro Survey Vest w/ Pockets, XL - Lime	1	\$50.75
23-550-XXL	SitePro Survey Vest w/ Pockets, XXL - Lime	1	\$50.75





Field Supplies & Accessories

Two-Way Radios

SitePro Safety Vests

Part #	Description	Qty	PLI Price
53862	Motorola Remote Speaker Microphone	1	\$62.95
RMV2080	Motorola Radio - VHF 2-Watt/8-Channels/Non-Display	1	\$245.00
RMU2080	Motorola Radio - UHF 2-Watt/8-Channels/Display	1	\$290.00
DTR410	Motorola Digital Radio - Up to 100 Contacts (Private/Group)	1	\$319.00
RDV5100	Motorola Radio - HF 2-5 Watts/10-Channel/Non-Display/Repeater	1	\$325.00
DTR550	Motorola Digital Radio - Up to 150 Contacts (Private/Group)	1	\$349.00
RDU4100	Motorola Radio - UHF 2-4 Watts/10-Channels/Non-Display/Repeater	1	\$360.00



Road Signs & Accessories

Mesh Road Signs & Accessories

Part #	Description	Qty	PLI Price
36M-MS-OLAH	36in. x 36in. "One Lane Ahead" sign	1	\$41.95
36M-MS-FAA	36in. x 36in. Mesh "Flagger Ahead" Sign	1	\$41.95
36M-MS-SCA	Mesh "Survey Crew Ahead" Sign	1	\$41.95
48M-MS-WAA	48in. x 48in. Mesh Sign w/ "Work Area Ahead"	1	\$49.50
48M-MS-SCA	48in. x 48in. Mesh "Survey Crew Ahead" Sign	1	\$49.50
MS-RIGID-30	Compact Sign Base	1	\$143.00



Road Signs, Cones & Lights

Part #	Description	Qty	PLI Price
12PVCS-G	12in. 1.5lb Traffic Cone - Green	1	\$6.29
PC500-2-A	Pyralite Flash Magnetic Light - Amber	1	\$90.12
SSP-1	24in Octagonal Stop/Slow Paddle, Reflectorized	1	\$74.00
SSP-1T	24in Oct. Stop/Slow Paddle, Reflect. & Telescopic	1	\$92.00
272895	WAP-Class 1 Amber Strobe, Med. Profile	1	\$140.99
WAMINIFL-C	LED Mini Light Bar	1	\$178.50
WAMINIFLM-C	LED Mini Light Bar (Magnetic)	1	\$200.82
WAMMB S35M-A	Low Pro Strobe Mini Light Bar (Magnetic)	1	\$233.85
272876	Amber Light	1	\$123.50



Road Sign & Spring Base

This single spring sign stand has Step-n-Drop legs. It also comes with the traditional latch bracket connector for plastic corner pockets, or the universal sign holder which is ideal for sewn corner pockets. (25 lbs.)

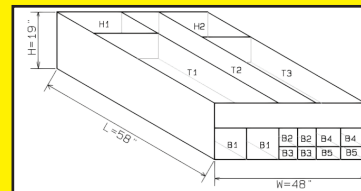
Part #	Description	Qty	PLI Price
4026048-EV-HF	48x48 Survey Crew Ahead Sign	1	\$85.00
4022300	Road Sign Base w/ Spring & Extendible Legs	1	\$177.10



Survey Vehicle Accessories

Aluminum Survey Truck Boxes

Designed Specifically for Surveyors.
Features Heavy-Duty Aluminum Construction.
Store Tripods, Lath, Poles, Instruments & More!
Call 412.861.6534 for More Information!



Part #	Description	Qty	PLI Price
4858	Logix Box 48in. x 58in. Aluminum Survey Box (Truck-Specific)	1	\$1,667.00





Field Supplies & Accessories

Hand Tools

Bully Tools Hand Tools

Part #	Description	Qty	PLI Price
99206	Water Key, T-Style Handle, 36in.	1	\$16.77
99207	Water Key, T-Style Handle, 48in.	1	\$19.72
99202	Soil Probe, T-Style Handle, 36in.	1	\$16.78
99203	Soil Probe, T-Style Handle, 48in.	1	\$18.77
99204	Soil Probe, T-Style Handle, 60in.	1	\$22.71
99200	Manhole Cover Hook, T-Style Handle, 24in.	1	\$17.75



Council Tool Hand Tools

Part #	Description	Qty	PLI Price
PR40	Council Tool 4lb. Engineer Hammer w/ 15in. Wooden Handle	1	\$19.35
PR40FG	Council Tool 4lb. Engineer Hammer w/ Fiberglass Handle	1	\$22.43
PR600	Council Tool 6lb. Sledge Hammer w/ 36in. Wooden Handle	1	\$25.85
PR600FG	Council Tool 6lb. Sledge Hammer w/ 34in. Fiberglass Handle	1	\$26.92
PR800FG	Council Tool 8lb. Sledge Hammer w/ 34in. Fiberglass Handle	1	\$40.00
1436	Council Tool Ditch Bank, 14in. Blade, 36in. Wooden Handle	1	\$39.12



Machetes, Manhole Hooks, Brush Axes & Frost Pins

Part #	Description	Qty	PLI Price
442P-MA22	22in. Machete	1	\$16.00
442P-MA24	24in. Machete	1	\$17.95
44MA22SHEATH	22in. Leather Machete Sheath w/ Belt Loop	1	\$23.00
44MA24SHEATH	24in. Leather Machete Sheath w/ Belt Loop	1	\$24.95
33045	Swedish Brush Axe	1	\$55.50
4418RT	Red Top Frost Pin	1	\$26.50
4418GD	Red Top Square Gad	1	\$32.00
4432DP	Red Top Manhole Hook, Diamond Point Tip	1	\$29.95
4432FH	Red Top Manhole Hook, Curved w/ 36in. Handle, Flat Top	1	\$29.95



New! Easy-Off Manhole Cover Remover

Operating Instructions:

1. Secure the "J" hook through the hole of the manhole cover.
2. Position shaft over manhole, take up the chain slack and attach to "S" hook
3. Pull back on Easy Off handle, displacing cover.
4. Move tool away from manhole until chain is tight and repeat. *It's that easy!*

Part #	Description	Qty	PLI Price
273995	Easy-Off Manhole Cover Remover	1	\$136.50



Easy-Off Manhole Cover Hook

This tool is designed to remove stubborn manhole covers manually. Just insert the hook under the groove of the lid and pull upwards. The hook is made of high-grade hexagon tool steel that has been properly hardened to prevent bending under stress.

Ontario Knife Company Machetes

Part #	Description	Qty	PLI Price
BSH18	OKC 18in., Heavy Duty Nylon Sheath w/ Loop	1	\$12.00
BSH22	OKC 22in., Heavy Duty Nylon Sheath w/ Loop	1	\$13.00
6145	OKC 18in., Open-Handle Military Machete	1	\$23.50
8294	OKC 22in., Open-Handle Machete	1	\$24.50
8516	OKC 18in., Orange D-Handle Machete	1	\$25.25
8520	OKC 22in., Orange D-Handle, Heavy Duty Machete	1	\$26.00
6120	OKC 18in., Sawback Machete	1	\$26.50





Field Supplies & Accessories

Hand Tools (Continued)

Seco/Estwing Hand Tools

Part #	Description	Qty	PLI Price
9070-08	Estwing Engineer's Hammer, 48oz.	1	\$32.95
9070-03	Estwing 13in. Rock Pick	1	\$37.95
9070-00	Estwing Axe w/ Leather Sheath	1	\$50.95



SitePro Hand Tools

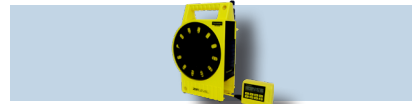
Part #	Description	Qty	PLI Price
17-EWB3-4LB	SitePro 4lb. Drilling/Club Hammer	1	\$35.00



Alternative Leveling Solutions

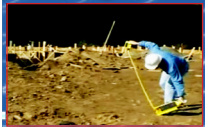
ZIPLEVELS

Part #	Description	Qty	PLI Price
PRO-2000	ZIPLEVEL Pro 2000 Elevation w/ Accessories	1	\$899.00



Introducing the ZIPLEVEL!

Set up in Seconds, Finish in Minutes, by YOURSELF!



Unpack, Power-On, & Zero at a Reference Point



Read Deviations from Level Plane



Pack-Up & Go!

Impact & Water Resistant

Single Setup Vertical Range of 40ft Over a 200ft Circle

Jobsite Rugged Operation -22°F to +158°F for Months on 1 9V Battery



Included Unipod Lets You Measure While Standing



Displays Elevations in Your Preferred Scale

Unlike a rotary laser, ZIPLEVEL® lets you truly work alone to quickly and easily level and read elevations directly in unmistakably clear digits. NO MORE rods, tripods, sensors, line-of-sight, error with distance, factory calibration or tedious computations. Now you can measure over any distance or elevation on earth, from paper thickness to the height of a mountain without error-inducing tabulation or math. **To Learn More, Contact: 412.861.6534!**

Used Equipment Refurbished. Recalibrated. Ready to Work.

www.laserinst.com/used

Serviced by Our Factory-Trained Technicians! Package Pricing or Individual Units!

Receivers to Robots!

**90-Day Warranties
on Used Equipment!**
(Optional Extended Warranties)

Updated Weekly!

*Limited delivery areas. Please call 724.266.1600 for more information

**Need Help with Setup or Troubleshooting Your Equipment?
Visit Our Support Page!**

- Online Support Library for Common Problems

- Contact Info for Our Industry Support Reps

Submit a Support Request Ticket!

www.laserinst.com/support





Construction Layout Solutions

Leveling Lasers



Rugby 610 & 620

- Key Features:**
- One-button operation
 - Superb performance w/ Rod Eye receivers
 - Wide working range of 2,000ft (600m) using Rod Eye 140/160 receivers
 - IP67 Rating
 - Self-leveling
 - 40-60 Hour operation

Rugby 610
(PN: 6008612)
PLI PRICE:
\$725.00

Rugby 620
(PN: 6008618)
PLI PRICE:
\$960.00



LL300N & LL300S

- Key Features:**
- Accuracy of ±3/32in @ 100ft (±2.2m @30m)
 - 1,650-2,600ft (500-800m) Diameter range
 - Rugged design
 - HL450 included

LL300N
(PN: LL300N)
PLI PRICE:
\$752.00

Leveled Price!

LL300N KIT
(PN: LL300N-1 / LL300N-2)
PLI SPECIAL:
\$850.00

LL300S
(PN: LL300S)
PLI PRICE:
\$840.00



LL500

- Key Features:**
- Temperature compensation
 - Self-leveling
 - Alkaline or rechargeable batteries
 - HL700 or CR600 laser receiver
 - 1,600ft (500m) Diameter working range
 - Perfect for applications including:
 - Checking and adjusting elevations
 - Taking grade shots - Foundation checks
 - Excavations - Footings - Forms
 - Screeding concrete - Slope work and more!

LL500
(PN: LL500)
PLI PRICE:
\$1,150.00



- Rugby CLA**
The Right Choice for Every Application!
Choose Base Unit or FIVE Upgrade Options Based On Your Needs!

CLA Base Unit
(PN: 6012279)
PLI PRICE:
\$1,850.00



CLX 250	CLX 500	CLX 600	CLX 700	CLX 800
(PN: 6012302)	(PN: 6012291)	(PN: 6012292)	(PN: 6012293)	(PN: 6012294)
\$140.00	\$150.00	\$590.00	\$880.00	\$3,580.00

Grade Lasers

Level-Best Laser Grading Box



Fine Grading Made Easy for Tractors & Skid Steers

Rugged Casters, Wheel Hub and Tapered Roller Bearing Assemblies:

Composite Bushings: Foam-Filled Tires:

Durable Steel: Durable Cutting Edges:

To Learn More, Call 724.266.1600 or Email PLI@laserinst.com



- Rugby CLH**
Simplicity At Its Best!
Choose Base Unit or THREE Upgrade Options Based On Your Needs!

CLH Base Unit
(PN: 6012274)
PLI PRICE:
\$1,350.00



CLX 200	CLX 300	CLX 400
(PN: 6012288)	(PN: 6012289)	(PN: 6012290)
\$150.00	\$380.00	\$660.00

The First Upgradable Lasers

The Leica Rugby CLA and CLH allow you to upgrade your lasers to match your application needs. Pay for the functionality YOU need to do your job without paying for extra features you don't use.



GL412N & GL422N

- Key Features:**
- Accuracy of 1.5mm @ 30m (1/16in @ 100ft)
 - Working range of up to 800m (2,600ft)
 - RC402N Remote allows for up to 100m (330ft) operation
 - Auto grade match
 - IP66 Rating

Leveled Price!

GL412N
(PN: GL412N)
PLI SPECIAL:
\$1,790.00

GL422N
(PN: GL422N)
PLI PRICE:
\$2,125.00



GL612N & GL622N

- Key Features:**
- Auto self-leveling
 - Auto grade-matching
 - Grade range of ±25%
 - Anti-vibration filter
 - Temp. compensation and PlaneLok
 - Auto axis alignment
 - Mask mode function (turns beam off in up to 3 sides)

GL612N
(PN: GL612N)
PLI PRICE:
\$2,195.00

GL622N
(PN: GL622N)
PLI PRICE:
\$2,395.00





Construction Layout Solutions

Pipe & Utility Lasers



DG613, DG613G & DG813

Key Features:

- Grades of -12% to +40%
- Operating range of up to 150m (500ft) w/ radio/ IR remote
- IP68 rating
- Flexible power and time-saving functions
- Green-beam (DG613G)



Leveled Price!

DG613
(PN: DG613)

PLI SPECIAL:
\$3,795.00

DG613G (GREEN)

(PN: DG613G)
PLI PRICE:
\$3,995.00

DG813
(PN: DG813)
PLI PRICE:
\$4,299.00

DG613/DG613G/DG813 Pipe Laser Parts & Accessories

Part #	Description	Qty	PLI Price
P20/P20B	SP Alkaline Bat. Pack - DG511/DG711	1	\$80.75
Q104667	SP Battery - DG613/DG813	1	\$117.00
P23/P23B	SP NIMH Battery Pack - DG511/DG711	1	\$190.00
Q104781	SP Charger - DG613/DG813	1	\$75.00
P21	SP Battery Cable - 12v. DC w/ Clips	1	\$93.50
P25	SP Car Adapter	1	\$171.00
RC803	SP Remote - DG613/DG813	1	\$385.00
RC501	SP Remote - DG511/DG711 (3-Button)	1	\$290.00
RC502	SP Remote - DG511/DG711 (7-Button)	1	\$417.00
SF803	SP Spot Finder - DG613/DG813	1	\$390.00
956-1	SP Set of Spare Pipe Laser Elements	1	\$54.50
956	SP Pipe Laser Target w/ 2 Elements	1	\$88.00
1239	SP Extended Height Vertical Pole Kit	1	\$245.00
1230	SP Heavy Duty Invert Plate	1	\$255.00
1244	SP T-Bar	1	\$458.00
929	SP Manhole Blower	1	\$467.50
1017	SP Manhole Mount	1	\$554.90



UL633N

Key Features:

- Up to ±25% grade on X/Y/Z axes
- Auto axis-alignment
- 800m (2,600ft) Diameter range
- Automatic temp. compensation
- Electronic leveling vibration filter
- Auto self-leveling and grade-matching
- Withstands 1m (3ft) drops onto concrete



UL633N
Universal Laser
w/ RC603N Remote
& HL760 Receiver
(PN: UL633N)
PLI PRICE:
\$2,990.00



QML800Q

Key Features:

- Two laser beams mark a visible "X" at desired points
- System controlled by an intuitive tablet app
- Simply tap points on tablet and lasers position "X" at that location on floor and ceiling
- Complicated shapes such as arcs and multilayered serpentine soffits made easy
- Setup accomplished through quick location of 2 known control points



CALL FOR QUOTES!
724.266.1600
PLI@LASERINST.COM

56% Reduction in Labor Hours	1 Day Layout Completion	Less Errors
1/8" Accuracy	1,200+ Linear Feet Per Day	"In & Out" Efficiency



Piper 200

Key Features:

- 10% to +25% Grades
- Operating range of up to 250m (650ft)
- Self-leveling range of -15% to +30%
- Self-centering
- Optional scope and mount kit

Piper 200
(PN: 748710)
PLI PRICE:
\$5,005.00



Piper Laser Parts & Accessories

Part #	Description	Qty	PLI Price
746156	Piper 200 Carrying Case	1	\$150.00
746161/746162	Foot, 6"/8", Piper (4 required)	1	\$7.00/\$8.00
746163/ 746164	Foot, 9"/10", Piper (4 required)	1	\$10.00
746165	Foot, 12", Piper (4 required)	1	\$10.00
746157	IR remote control	1	\$195.00
756088/ 757608	Target insert, 6-12"/15-21"	1	\$30.00/\$40
725858	Target Assy w/small insert 300mm, red	1	\$115.00

Piper Laser Parts & Accessories (Continued)

Part #	Description	Qty	PLI Price
731493	Blower used for pipelaying applications	1	\$550.00
799185	GKL311, Li-Ion charg., adapter, car cable	1	\$140.00
734752	GKL211, Li-Ion bat charger for GEB221/ GEB211, car adapt. cable, net adapter	1	\$110.00
733270	GEB221, Li-Ion, 7.4V/4.4Ah, chargeable.	1	\$190.00
746159/ 8247505	Mounting bracket/Steel Knob 5/8 x 11	1	\$45.00/\$50
745139	Trivet handle assembly	1	\$55.00
815613	PTC100 Target Assembly, 100 mm / 4"	1	\$70.00
742802	Battery door assembly	1	\$107.49
826695	7-1/2 Mtg Rod 5/8-11 Assembly	1	\$130.00
746160	Scope and mount assembly	1	\$145.00
8246315	Handle Rod Mount for use w/ AGL Rods	1	\$320.00
746158	Trivet assembly with mounting bracket	1	\$395.00
8241078	Manhole Transit Mount w/ 5/8 -11 thread	1	\$525.00
6000000	Drop manhole assembly for Piper series	1	\$895.00
826728	Transit (AGL Gradelight)	1	\$1,095.00



Construction Layout Solutions

Interior Lasers

(Available in Both Red & Green Laser Beams)



LT20G & LT52G

Key Features:

- High-visibility green laser beams
- Wide fan beam angles for maximum coverage
- Versatile accessory can be used for any application including magnetic mounting, ceilingtrack mounting and tripod mounting
- Rugged, robust design
- Includes a soft pouch w/ belt loop, target,

LT20G (GREEN)
(PN: LT20G)
PLI PRICE:
\$228.00

LT52G (GREEN)
(PN: LT52G)
PLI PRICE:
\$399.00



LT56 & LT58G

Key Features:

- 360 Degree beams
- Li-Ion batteries for 25+ Hrs of operation
- 360 Degree beams
- Auto self-leveling
- Optimized for ceiling work w/ mounting acc.
- Compensator lock and hard-shell case
- Optional HR220 for exterior applications
- Survives 3ft (1m) drops onto concrete

Leveled Price!
LT56 (RED)
(PN: LT56)
PLI SPECIAL:
\$465.00
(w/ HR220 Remote)
(PN: LT56-2)
PLI PRICE: \$547.00
LT58G (GREEN)
(PN: LT58G)
PLI PRICE:
\$590.00



LP51G

Key Features:

- High visibility beam
- Automatic self-leveling and plumb
- Fast, one-person 90 degree layout
- Accuracy of 3/16 inch @ 50ft (3mm @ 10m)
- Working range up to 100ft (30m)
- Dust, water and shock-resistant
- Protective rubber over-molding withstands a drop of up to 3ft (1m) onto concrete
- Compensator lock for non-level applications
- Ships complete in soft pouch w/ mag. mounting accessory, target and x2 AA batteries

LP51G (GREEN)
(PN: LP51G)
PLI PRICE:
\$212.50



HV302 & HV302G

Key Features:

- High-visibility beam
- Line scan and beam plunge feature for easy drywall work
- Rotor vial for easy and accurate vertical plumb
- Preset adjustable rotation speed and scan line sizes to fulfill all interior application needs
- Increases flexibility w/ long range radio remote
- Fast setup, fewer parts and auto self-leveling

HV302 (RED)
(PN: HV302-1)
PLI PRICE:
\$1,095.00
HV302G (GREEN)
(PN: HV302G-1)
PLI PRICE:
\$1,250.00



Rugby 640G

Key Features:

- Self-leveling, horizontal, vertical, 90 degree and manual slope in dual axis
- Accuracy of ±2.2mm @ 30m (±3/32in @ 100ft)
- Range of 400m (1,300ft)
- Scan 90 – make layout easier by quickly moving the beam 90 degrees to the left or right side
- Plumb Down – auto and accurate plumb down direction for alignment over a reference point
- Work conveniently with offsets thanks to the Rod Eye receivers digital read-out

Rugby 640G (GREEN)
(PN: 6011836)
PLI PRICE:
\$1,595.00



FREE CALIBRATION CHECK!

Auto-Levels, Slope Lasers, Rotating Lasers, Line & Point Lasers
Visit Any of Our 4 Service Centers!

Pittsburgh, PA: 724.266.1600	Columbus, OH: 614.759.1000
Cincinnati/Dayton, OH: 513.539.0022	Cleveland/Akron, OH: 330.633.4900

NO APPOINTMENT REQUIRED!

One Free Calibration Check Per Location Per Day

Hand Receivers



Rod Eye Basic & Rod Eye 120

Key Features:

- LCD indication
- Audio indication
- Automatic shut-off
- Working range of 600m (Basic) to 900m (120 Basic)
- Level vial alignment
- Versatile grade rod bracket

Rod Eye Basic
(PN: 769811)
PLI PRICE:
\$175.00

Rod Eye 120
(PN: 789922)
PLI PRICE:
\$225.00



Rod Eye 140, 160 & 180

Key Features:

- LCD indication
- Level vial alignment
- Anti-strobe protection
- 12cm detection window of beam over entire distance
- Auto slope catching and monitoring (180)

Rod Eye 140
(PN: 789923)
PLI PRICE:
\$295.00
Rod Eye 160
(PN: 789924)
PLI PRICE:
\$350.00
Rod Eye 180
(PN: 828456)
PLI PRICE:
\$425.00



Construction Layout Solutions

Hand Receivers (Continued)



HL450, HL700, HL750 & HL760

Key Features:

- Digital readout of elevation
- Anti-strobe sensor
- Large reception height
- New capture function remotely retains measurement (HL700)
- Magnetic or bracket mounts



HL450
(PN: HL450)
PLI PRICE:
\$260.00

HL700
(PN: HL700)
PLI PRICE:
\$350.00

HL750
(PN: HL750)
PLI PRICE:
\$355.00

HL760
(PN: HL760)
PLI PRICE:
\$365.00



HR150, HR220 & HR320

Key Features:

- 3-Channel, dual-side LED display
- Built-in magnet for ceiling grid or drywall
- Work indoors or out up to 75m (250ft) (HR220)
- 100db Loud speaker indication (HR320)



HR150
(PN: HR150)
PLI PRICE:
\$130.00

HR220
(PN: HR220)
PLI PRICE:
\$144.00

HR320
(PN: HR320)
PLI PRICE:
\$170.00



HR150U & HL760U

Key Features:

- 3-Channel, dual-side LED display
- Built-in magnet for ceiling grid or drywall
- Work with red and high-visibility green beam lasers
- "Fingerprint" function filters other lasers



HR150U
(PN: HR150U)
PLI PRICE:
\$148.00

HL760U
(PN: HL760U)
PLI PRICE:
\$395.00

Machine Receivers



LMR240

Key Features:

- 250m Radius range
- 240 Degree reception
- 15cm Capture window
- 1.5-6mm Fine accuracy
- IP67 Rating
- 120-160Hr Battery life
- Ideal for use with backhoes and mini-excavators
- Extra-strong magnetic mount
- IP67 Rugged and waterproof



LMR240
(PN: 773569)
PLI PRICE:
\$595.00



LR30, LR50 & LR60

Key Features:

- Multiple channels of grade info
- Center & offset on-grade display
- Built-in plumb indicator



LR30
(PN: LR30)
PLI PRICE:
\$1,270.00

LR50
(PN: LR50)
PLI PRICE:
\$1,620.00

LR60
(PN: LR60)
PLI PRICE:
\$2,380.00

Choose the Right Receiver for the Right Job

Machine Type	Recommended Receiver(s)	Application(s)
Backhoes	Use CR600, LR20 or LR50	Grading
Skid-Steer Loader	Use CR600, LR20, LR30 or LR30W (w/ remote display)	Elevation Display
Mini Excavator	Use CR600, LR20, LR50 or LR50W (w/ remote display)	Elevation Display
Skid-Steer w/ Blade	Use LR30, LR50, or LR30W/LR50W (w/ remote display)	Elevation Display/ Lift Control
Smaller Dozer	Use LR30 or LR30W (w/ remote display)	Elevation Display/ Lift Control
Larger Excavator	Use LR50/LR60 or LR50W/LR60W (w/ remote display)	Elevation Display/ Lift Control
Larger Dozer	Use LR50 or LR50W (w/ remote display)	Elevation Display/ Lift Control



LR50W/LR60W - Wireless

RD20 Wireless Remote Display Capable:
Mounts in cab & displays grade to operator!



Part #	Description	QTY	PLI Price
MM-1	Magnetic Mount - Excavator	1	\$280.00
DM-20	Bolt on Mount - Dozer	1	\$280.00
LR50W	Receiver-Radio; Remote Display	1	\$1,920.00
LR60W	Receiver-Radio; Remote Display	1	\$2,675.00
LR50W-MM	KIT - Receiver, RD20 Remote & Mag Mount for Excavator	1	\$2,195.00
LR50W-DM	KIT - Receiver, RD20 Remote & Dozer Mount	1	\$2,195.00



Construction Layout Solutions

One-Person Construction Positioning Package



Revision
1.2.19

FOCUS 35 Robotic Total Station

- ▶ StepDrive motion technology
- ▶ Layout Pro software onboard
- ▶ Optional in 1", 2", 3", & 5" accuracies
- ▶ Motorized drive system at the instrument
- ▶ Gun-to-prism communication
- ▶ LockNGo tracking technology
- ▶ Dual-battery system (RX models)
- ▶ 2.4GHz Radio (Robotic/RX models)

One-Person Construction Layout Package

Option A: SP FOCUS 35 RX w/ Layout Pro Robotics Package



Optional ST10 Tablet w/ Layout Pro!
CALL FOR DETAILS!



Part #	Description
SUMF-35005	Spectra Precision Focus 35 RX 5" Robot w/ 2x Li-Ion Batteries, Charger, Case & 360° Prism
RG3-C41-002	Spectra Precision Ranger 3RC w/ ABC, Cam., 2.4GHz Radio & Layout Pro ROB
67501-08	Spectra Precision Ranger 3 Range Pole Bracket
88400-03-SPN	Spectra Precision 2.6m Telescopic, Carbon Fiber Pole w/ Snap Lock; Calibrated for 360° Prism & Adapter
90553-PL	Seco/Crain Tri-Max Standard, Dual-Clamp, Heavy Duty Fiberglass Tripod

Complete Package: \$23,742.00 *tax (\$1,009.27 per month*)

1.9% Financing for 24 Months*!

Additional Options:

Training (On-Site or Office): \$1,200.00 Per Day**
Layout Pro Office Software (PN: 63820-10): \$795.00
Warranty - FOCUS Robotic & Data Collector, Plus Software System (Call 724.266.1600 for Details)

**Within 30-mile radius of PLI locations.

Terms & Conditions

Through Trimble Financial Services, we offer competitive rates, flexible terms, fast response, as well as great service! There are several advantages to our finance programs: We can help you improve cash flow, it's very flexible and you can get 100% financing. In addition, our leasing and finance are easier and faster than bank financing, and may provide you with tax benefits.*** Ask your sales rep. for more info on the tax benefits of financing or leasing.
*Trade-in and rent-to purchase option not available with this offer
*Payment listed is before applicable taxes and is subject to credit approval.
*10% Down payment is required at listed price.
*\$100.00 Doc Fee due with advance payment
**Offers valid through 03/31/19.
***We recommend that you consult your tax advisor to find out the tax benefits specific to your business.



Construction Layout Solutions

Two-Person Construction Positioning Package



Revision
1.2.19

Two-Person Construction Layout Package

Option B: NPL-322+ w/ Layout Pro Construction Layout Package



Part #	Description
HQA46580	Nikon NPL-322+ 5" Single-Face Total Station (Includes: 2x Li-Ion Batteries, 1x Clip-On Bat. Holder, 1x Tribrach, 1x Plastic Carrying Case, 1x Universal Charger/Power Cord/Adapters)
RG3-G01-003	Spectra Precision Ranger 3RC Data Collector w/ Layout Pro, ABC, Cam, 2.4GHz Radio
5196-18	Trimble TSC3/Ranger 3 Tripod Bracket
N/A	Training, 1/2 Day On-Site or Office (within 30-Mile Radius of PLI Locations)

Complete Package: \$8,483.80 ^{+tax} (\$706.98 per month*)

0% Financing for 12 Months*!

Two-Person Construction Layout Package

Option C: NPL-322+ P w/ Layout Pro Construction Layout Package



Part #	Description
HQA46610	Nikon NPL-322+ 5" P Single-Face Total Station (Includes: 2x Li-Ion Batteries, Clip-on Battery Holder, Tribrach, Universal Charger, Power Cord, Adapters and Carrying Case)
RG3-G01-003	Spectra Precision Ranger 3RC Data Collector w/ Layout Pro, ABC, Cam, 2.4GHz Radio
5196-18	Trimble TSC3/Ranger 3 Tripod Bracket
N/A	Training, 1/2 Day On-Site or Office (within 30-Mile Radius of PLI Locations)

Complete Package: \$7,483.80 ^{+tax} (\$623.65 per month*)

0% Financing for 12 Months*!

Included w/ Two-Person Packages at NO CHARGE!

\$500.00+ Value, INCLUDED!

Part #	Description
6405-01-FOR	Seco 25mm Stake Out Prism - Flo. Orange
5540-10	Seco 8.5ft Ultralite Prism Pole
60-WDF20	CST/Berger Heavy Duty Wooden/Fiberglass Tripod

*See Page 22 for full Terms & Conditions. Credit Application on Page 29.





Build Construction Solutions



Take Control of the Jobsite

Our Build Construction Positioning Solutions, utilizing the latest technology from Trimble, give contractors more control of their jobsites. By connecting your office and field crews through wireless data transfer, design updates can flow between both teams in real-time. Jobs can be created, updated, monitored and maintained without missing a beat.

RTS Series Robotic Total Stations

The Trimble RTS Series Robotic Total Stations help contractors perform layout tasks significantly more efficiently than conventional mechanical systems. They offer construction-specific functionality and one-person operation for all jobsite layout and measurement, allowing for max flexibility and savings.



Training & Support

Our expert training and support team is composed of industry veterans with years of experience. We'll keep you up to speed on the latest and greatest hardware, software and practices, and are available by phone, email or on-site to help keep your projects moving.

Call Your Local PLI Build Construction Solutions Rep. or 724.266.1600 To Learn More!

Trimble Field Link Taking the Connected Construction Site to the Next Level!



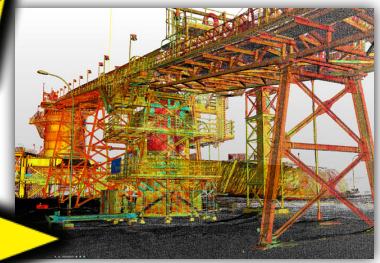
Kenai Rugged Tablet Computer

The new Trimble Kenai is a fully rugged tablet featuring Windows® 10 Pro and a large 10.1" screen capable of full-color images even in the brightest sunlight. Kenai connectivity includes Bluetooth®, Wi-Fi and optional 4G LTE dual-mode data cloud-capability, and utilizes hot-swappable batteries.



Trimble Field Link Software

Featuring task-based workflows, customizable views and a touch screen user interface designed to optimize the information presented, Trimble Field Link extends field layout capabilities. In addition to the advancements made in performing layout tasks, Trimble Field Link adds reporting routines to record and track layout productivity and to document existing site conditions.



RealWorks & EdgeWise

RealWorks 3D scanning software allows you to integrate 3D point data to extract measurements, generate deliverables and utilize inside 3D CAD software. EdgeWise software complements 3D scanners and RealWorks to provide efficient end-to-end workflows and accurate BIM-ready models.



R8s GNSS Receiver

The concept is simple: Take the field-proven Trimble R8s Receiver, pair it with Trimble Field Link Controller Software and watch productivity soar on the jobsite! Designed specifically to meet the needs of building construction, the Trimble R8s system for general contractors streamlines workflows to help perform common field positioning tasks fast.

Build Construction Equipment Essential Parts & Accessories

Part #	Description	QTY	Price
925-1004	Hardcase 17"L x 11.8"W x 6.4"H	1	\$132.50
90553-PL	Tri-Max Dual Clamp Instrument Tripod	1	\$369.50
4852-16	HD Column Clamp	1	\$365.00
61586-80	HD Column Clamp	1	\$400.00
4852-18	HD Column Clamp	1	\$461.00
6704-10	Spheres (x3) Case	1	\$785.00
6704-10-TR	Scanning Spheres	3	\$999.95



TX6/TX8 3D Laser Scanner

The Trimble TX6 and TX8 laser scanners set new standards for performance and ease of use in high-speed collection of 3D data. Using a state-of-the-art blend of speed, long range and precision, the Trimble TX6/TX8 delivers high quality results in civil survey, industrial measurement, engineering and construction.



**Precision Laser
& Instrument, Inc.**
www.laserinst.com

Construction • Survey • GIS

Sales • Service • Rentals • Training • Support

Monday-Friday, 7:30am-4:30pm | Saturday, 8:00am-12:00pm (Pittsburgh Only)



Locations:
(Full Addresses On Back Cover)

Pittsburgh, PA (HQ): 724.266.1600
Columbus, OH: 614.759.1000
Cincinnati, OH: 513.539.0022
Akron, OH: 330.633.4900
Charleston, WV: 304.776.1831
Bridgeport, WV: 304.933.3036

Build Construction Solutions

All Equipment Available for Daily/Weekly/Monthly Rental!



The Right Tool for the Job

The Right Team for Your Jobsite






RTS



R8s



TX6/TX8

Application	New Construction	Renovation Project
 Site Work (Underground Utilities)	RTS R8s (Based on Line of Sight)	RTS R8s (Based on Line of Sight)
 Ondeck Layout (Metal Deck & Concrete Slabs)	RTS (Long Range)	RTS (Long Range)
 Interior Layout (Overhead Existing)	RTS	RTS TX6/TX8 (Capture of Existing Site Conditions)



Robert Fancher

Field Technology Group: Sales

513.265.8228

RJF@laserinst.com

Ohio



Sean Geis

Field Technology Group: Sales

412.439.2743

SPG@laserinst.com

Western PA & WV



Shop Online! E-Commerce Store: www.laserinst.com





Geospatial Positioning Equipment & Accessories

Trimble SX10 Scanning Total Station Superior Surveying & Scanning in One

Surveys, Scans and Imagery with Supreme Precision

Achieve the highest in modern surveying precision and efficiency, automatically register dense 3D scan data, and add in live video and rich imagery, all in one total station! That's the power of the Trimble SX10, and paired with the familiar workflows of Access and Trimble Business Center Software, it enables you to create a range of deliverables like never before.

Key Features

- ▶ Combines surveying, imaging and high-speed 3D scanning in one revolutionary solution
- ▶ Trimble Lightning 3DM enables both high-accuracy measurements and high-speed scanning
- ▶ Scanning speeds of up to 26,600 pps at ranges up to 600m and a mere 14mm at 100m
- ▶ Improved Trimble VISION technology for fast, easy capture of high resolution site imagery
- ▶ Complete integration with workflows of Trimble Access and Trimble Business Center Software



NEW!

7-INCH TOUCHSCREEN!



Trimble S5 Trusted Performance

- Measure further and faster with Trimble DR Plus EDM
- Locate2Protect real-time equipment monitoring and InSphere equipment management
- Complete field-to-office solution for quick data capture and processing



Trimble S7 Fully-Loaded for Max Results

- Surveying, imaging, and 3D-scanning in one
- Improved robotic control, scene documenting, and photogrammetric measurements
- Complete field-to-office solution for quick data capture and processing



Trimble S9 & S9HP Advanced to Tackle Tough Jobs

- Available in 0.5" or 1" angle accuracy
- Optional Trimble VISION and SureScan Trimble 4D Control software for monitoring management



TSC3



TSC7

NEW!



T10

CALL 724.266.1600 FOR QUOTES!



Geospatial Positioning Equipment & Accessories

R10 GNSS Receiver

A New Level of Productivity

Collect more accurate data faster and easier - no matter what the job or the environment, with the Trimble R10 GNSS System.



Key Features

- ▶ Cutting-edge Trimble HD-GNSS processing engine
- ▶ Precise position capture and full tilt compensation with Trimble SurePoint technology
- ▶ Trimble CenterPoint RTX provides RTK precision anywhere without a base station or VRS
- ▶ Trimble xFill technology for centimeter-level positioning during connection outages
- ▶ Advanced satellite tracking with Trimble 360 receiver technology
- ▶ Sleek, ergonomic design for easier handling



R8s GNSS Receiver

Configured Today, Scalable Tomorrow

Key Features

- ▶ One configurable receiver that is scalable for future needs
- ▶ Available in post-processing, base only, rover only or base and rover configurations
- ▶ Advanced satellite tracking with Trimble 360 receiver technology
- ▶ Includes Trimble Maxwell 6 chips with 440 channels
- ▶ Simple integration with Trimble S-Series Total Stations
- ▶ Intuitive Trimble Access Field Software and Trimble Business Center Office Software





Geospatial Positioning Equipment & Accessories

Hydrographic Surveying Solutions



HydroLite-TM Echosounder Kit - Call 724.266.1600 To Learn More!

The HydroLite-TM should be included in every Survey and Engineering company's standard equipment kit for hydrographic surveying. Developed to meet the requirements of the U.S. Army Tactical Dive Teams, the rugged, wireless HydroLite-TM looks and feels like your traditional survey instrument. It quickly measures and logs depths more accurately than standard systems, making fast work of ponds, rivers, lakes and more!

Key Features:

- Portable, integrated hydrographic survey solution
- Adaptable to any vessel
- Wireless data transfer
- Meets IP65 standards
- Quickly export xyz data

Specifications:

- Frequency 200-KHz
- Beam width: 4°
- Ping rate: 6-Hz
- Depth accuracy: 1cm / 0.1% of depth
- Output formats: NMEA, ASCII, Quality
- Range: 0.3m-75m

GPS & Data Collector Sold Separately

Scope of Supply:

- Sonarmite echosounder kit
- Hydrolite boat mount/pole kit
- Rugged shipping case
- User/training manual
- 1-Year support and warranty

Optional:

- Coast Guard beacon receiver
- PC data acquisition
- Digital bar check
- Tide gauge



HyDrone-RCV - Call 724.266.1600 To Learn More!

The HyDrone-RCV is a hand-portable, remotely controlled catamaran platform developed for bathymetric survey applications. Working in conjunction with the HydroLite-TM portable echosounder kit, the HyDrone-RCV accomplishes the same results as more expensive RC survey systems. The lightweight, wide profile and watertight construction provide stability, ruggedness and portability. It is manufactured from high quality marine materials and components, and easily disassembles for transport and shipping. Work environments include mines, sewage treatment plants, contaminated lakes, harbors and rivers. Remote control access of the survey boat is easy using a high-power remote control system that offers up to 2km range with a survey endurance of over four miles on a single battery pack.

Scope of Supply:

- 2x12m catamaran pontoon hulls
- Two 12V DC shrouded thrusters
- 12V battery bank and charger
- 1 Year standard warranty
- Cross frame
- Handheld remote control unit
- Custom-fit portable shipping case
- Lifetime support

Optional:

- Sound velocity profiler (SVP)
- Radio telemetry
- HYPACK software
- RTK GPS
- Side scan sonar module
- HydroLite-TM
- AutoNAV AutoPilot Module with Mission Planner App on PC Laptop





Katie.B.Shannon@wellsfargo.com
Trimbleapps@wellsfargo.com
Credit Fax 888-375-3288

Company Name _____

Address _____ Email _____ Phone _____

City _____ County _____ State _____ Zip _____ Fax _____

Attention _____ Title _____ Years in Business _____

Description of Business _____ Fed ID # _____ Corporation Partnership Proprietorship
(Required Information)

BANKS Name Telephone Account Number Account Officer
 1. _____

2. _____

CREDIT & TRADE REFERENCE Name Contact Telephone
 1. _____

2. _____

If individually owned, a partnership or a closely held corporation, please include and complete the following:

Name _____ S.S.# _____ Date of Birth _____ Telephone _____

Address _____ City _____ State _____ Zip _____ Rent Own

Name _____ S.S.# _____ Date of Birth _____ Telephone _____

Address _____ City _____ State _____ Zip _____ Rent Own

I/We have applied to finance equipment. I authorize Wells Fargo Equipment Finance, a division of Wells Fargo Bank, N.A. to investigate the references listed above or other credit data including reports from credit reporting agencies which may be required as part of its normal credit approval procedures and authorize that any such information requested may be released by telephone. **NOTICE: Wells Fargo Equipment Finance complies with Section 326 of the USA PATRIOT Act. This law mandates that we verify certain information about you while processing your lease application.**

Authorized this _____ Day of _____ 20_____

Signature _____ Title _____

DESCRIPTION OF EQUIPMENT TO BE LEASED

Quantity	New/Used	Model - Description	Unit Cost	Total Cost

Lease Term _____ Lease Rate Factor _____ **TOTAL COST**
 Purchase Option _____ Number of Advance Payments _____ **Less Trade In Allowance**
Net to Finance

Lease Payment \$ _____
 + Maintenance Payment \$ _____
 = TOTAL Payment \$ _____

Tax Rate _____

Dealer Precision Laser & Instrument, Inc. **Salesperson** _____ **Phone** 724.266.1600

85 11th Street Ambridge PA 15003 724.266.8161

Street City State Zip Fax

APPLICANT - DETACH AND RETAIN

Creditor's Name: Wells Fargo Bank, N.A.

Creditor's Address: 300 Tri-State International, Lincolnshire, IL 60069

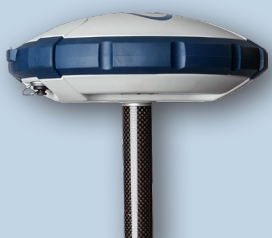
If your application for business credit is denied, you have the right to a written statement of the specific reasons for the denial. To obtain the statement, please contact Wells Fargo Bank, N.A. Attn: Credit Manager, 300 Tri-State International, Suite 400, Lincolnshire, IL 60069 or (800) 570-3607 within 60 days from the date you are notified of our decision. We will send you a written statement of reasons for the denial within 30 days of receiving your request.

NOTICE: The Federal Equal Credit Opportunity Act prohibits creditors from discrimination against credit applicants on the basis of race, color, religion, national origin, sex, marital status, age (provided the applicant has the capacity to enter into a binding contract), because all or part of the applicant's income derives from any public assistance program, or because the applicant has in good faith exercised any right under the Credit Protection Act (15 U.S.C. 1601 et seq.). The Federal agency that administers compliance with this law concerning this creditor is the Comptroller of the Currency, Customer Assistance Group, 1301 McKinney Street, Suite 3450, Houston, TX 77010-9050. Wells Fargo Equipment Finance is a division of Wells Fargo Bank, N.A.



Geospatial Positioning Equipment & Accessories

GNSS Receivers



SP60 GNSS Receiver

Key Features:

- 240-Channel 6G ASIC
- Z-Blade GNSS-centric technology
- Both RTK and Trimble RTX capable
- Anti-theft technology
- Optional Long-range Bluetooth or UHF radio
- Extended survey scalability

Simply Versatile

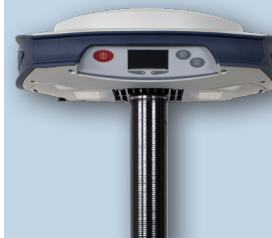
The SP60 is a new generation GNSS receiver offering a high level of flexibility to cover any demand, from GIS to more sophisticated RTK and Trimble RTX capable solutions.



(PN: 104234-03)

PLI PRICE: \$9,895.00

0% for **12**
Financing Months*



SP80 GNSS Receiver

Key Features:

- Z-Blade GNSS-centric technology
- Backup RTK and RTK bridge
- Trimble RTX corrections
- Anti-theft technology
- Wifi, SMS and email
- 3.5G Cellular modem
- Hot-swappable batteries
- eLevel technology

The Most Connected GNSS Receiver

The SP80 has the ability to track and process all available GNSS signals to provide the highest in precision measurement, even in challenging environments, and has the best communication and connectivity available.



(PN: 94334-50)

PLI PRICE: \$12,495.00

0% for **12**
Financing Months*



Ask About On-Site Equipment Demos!

Call 724.266.1600

Mechanical Total Stations



NPL-322+

Key Features:

- Optional in 2" and 5"
- Both prism and reflectorless
- Fast, accurate EDM
- Li-Ion batteries
- Bluetooth enabled
- Rugged and lightweight design
- Legendary optics



**Calibrated
Before Delivery**

5" Single-Face Model
(PN: HQA46580)

PLI SPECIAL:
\$4,695.00

2" Dual-Face Model
(PN: HQA46570)

PLI PRICE:
\$5,995.00

0% for **12**
Financing Months*



NPL-322 P+

Key Features:

- Optional in 2" and 5"
- Prism-only
- Fast, accurate EDM
- Li-Ion batteries
- Bluetooth enabled
- Rugged and lightweight design
- Legendary optics



**Calibrated
Before Delivery**

5" Single-Face Model
(PN: HQA46610)

PLI SPECIAL:
\$3,695.00

2" Dual-Face Model
(PN: HQA46600)

PLI PRICE:
\$4,695.00

0% for **12**
Financing Months*



Nikon XF

Key Features:

- Autofocus
- Fast, powerful EDM
- Dual color touchscreen displays
- Trimble Locate2Protect ready
- PIN Security
- 1", 2", 3" and 5" accuracies
- Hot-swap. batteries



**Calibrated
Before Delivery**

Nikon XF 5"
(PN: HNA40500)
PLI PRICE:
\$10,350.00

Nikon XF 3"
(PN: HNA40300)
PLI PRICE:
\$11,250.00

0% for **12**
Financing Months*



Nikon XS

Key Features:

- Autofocus
- Dual-face displays
- Fast, powerful EDM
- PIN security
- 1", 2", 3" and 5" accuracies
- Nikon onboard software
- Hot-swappable batteries



**Calibrated
Before Delivery**

Nikon XS 3"
(PN: HNA20300)
PLI PRICE:
\$9,500.00

Nikon XS 2"
(PN: HNA20200)
PLI PRICE:
\$10,350.00

0% for **12**
Financing Months*



Geospatial Positioning Equipment & Accessories

Robotic Total Stations



FOCUS 35 Robotic Total Station

Key Features:

- StepDrive™ motion technology
- SurveyPro™ software onboard
- Optional in 1", 2", 3" and 5" accuracies
- Motorized drive system at the instrument
- Gun-to-prism communication
- LockNGo™ tracking technology
- GeoLock GPS-assist technology
- Dual-battery system (RX models)
- Tracking sensor for prisms
- 2.4GHz Radio (Robotic/RX models)
- PIN code security locking system
- High speed, accuracy and precision

Part #	Description	Qty	PLI Price
SUMR-35005	5" Robot Model	1	\$16,195.00
SUMR-35003	3" Robot Model	1	\$17,095.00
SUMR-35002	2" Robot Model	1	\$17,995.00
SUMR-35001	1" Robot Model	1	\$19,795.00
SUMF-35005	5" RX Model	1	\$16,995.00

Please Call 724.266.1600 for Additional Options.



All Robotic Instruments Include:

- A motorized drive system
- A tracking sensor to range pole and prism
- Instrument, range pole and prism communication

Calibrated Before Delivery **0% Financing for 12 Months***

0% Financing for 12 Months!

Put Your Equipment Investment to Work Before You Pay Out!

Many Spectra Precision and Nikon surveying instruments are available for immediate purchase at 0% financing for 12 months*! See Page 29 for a Credit Application to take advantage of this great offer while it lasts.

Contact Your Local PLI Sales Rep. for Details.

*Applies only to Spectra Precision and/or Nikon equipment with an MSRP of \$5,000.00 or greater

*10% Down payment required

*Trade-in and rent-to-purchase options not available with this offer

*\$100 Doc Fee due with advance payment

*We recommend that you consult your tax advisor to learn about the tax benefits specific to your business

Data Collectors & Software



Ranger 7

Key Features:

- 7-Inch touchscreen
- 68-Button keyboard
- Barcode, RFID and GNSS optional
- 4G LTE, 802.11 a/b/g/n and Bluetooth
- Windows 10 Pro OS

Survey Pro Model (PN: RG7-S02-001)
PLI PRICE:
\$5,100.00



SP20

Key Features:

- GNSS
- Android OS
- 4G LTE
- 5.3-Inch touchscreen
- Optional monopole survey-grade

114819-00	SP20 meter	\$3,495.00
114819-01	SP20 sub-mtr.	\$4,995.00
114819-02	SP20 dm	\$6,595.00
114819-03	SP20 cm	\$8,595.00
115874-01	sub-mtr. option	\$1,500.00
115875-01	dm option	\$3,100.00
115876-01	cm option	\$5,100.00

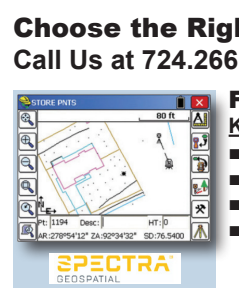


Ranger 3

Key Features:

- Sunlight-readable VGA screen
- IP67 Rating
- SDHC & USB
- 30Hr+ Rechargeable
- Windows Mobile
- WiFi, GPS, Compass

Survey Pro Model (PN: RG3-P31-002)
PLI PRICE:
\$3,395.00



Choose the Right Software for Your Needs Call Us at 724.266.1600 To Learn More!

FAST Survey

Key Features:

- Easy data collection
- Colorful graphics
- Main handheld devices supported
- Compatible w/ a wide range of measurement tools (GNSS Receivers, Total Stations, etc.)



ST10

Key Features:

- Large, 10.1" touchscreen
- 128GB storage
- 4G Data modem
- Optional 2.4GHz radio
- Windows 10 OS
- Field Rugged

Survey Pro Standard (PN: ST10-S10-001)
PLI PRICE:
\$3,799.00

Survey Pro Robotic (PN: ST10-R11-001)
PLI PRICE:
\$6,499.00



Survey Pro/Survey Office

Key Features:

- Advanced COGO, Curve and stakeout Solutions
- Complete road layout and staking tool set
- Complete mechanical instrument support
- All data collection features and basic survey features
- Compelling survey deliverables, communication between field and office, and optional roads module

Please Call 724.266.1600 for Additional Options.



Geospatial Positioning Equipment & Accessories

Warranty Plans for Geospatial Equipment

Control Units

Part #	Description	Qty	PLI Price
EWLS-CU-HW	Warranty: Survey TSC3/TSC7 <u>Hardware Only</u> Extended	1	\$275.00
EWLS-CU-HW-RNST	Warranty Reinstatement: Survey TSC3/TSC7 <u>Hardware Only</u> Extended	1	\$413.00
EWLS-CU-HW	Warranty: Trimble Recon, CU, Slate <u>Hardware Only</u> Extended	1	\$275.00
EWLS-CU-HW-RNST	Warranty Reinstatement: Trimble Recon, CU, Slate Controller, <u>HW Only</u> Extended	1	\$413.00



GNSS/GPS Receivers

Part #	Description	Qty	PLI Price
EWLS-ANT	Warranty: Survey External Antenna Hardware Extended	1	\$125.00
EWLS-ANT-RNST	Warranty Reinstatement: Survey External Antenna Hardware Extended	1	\$188.00
EWLS-GPS	Warranty: Survey GPS Receiver Hardware and Firmware Maintenance	1	\$845.00
EWLS-GPS-RNST	Warranty Reinstatement: Survey GPS Receiver HW and Firmware Maintenance	1	\$1,268.00
EWLS-R4-GPS	Warranty: Survey R4 Receiver Hardware and Firmware Maintenance	1	\$615.00
EWLS-R4-GPS-RNST	Warranty Reinstatement: Survey R4 Receiver Hardware and Firmware Maintenance	1	\$923.00
EWLS-GPS-FW	Firmware Maintenance: Survey GPS Annual Firmware	1	\$400.00
EWLS-GPS-FW-RNST	Firmware Maintenance Reinstatement: Survey GPS Firmware	1	\$600.00



Robotic & Conventional/Mechanical Total Stations

Part #	Description	Qty	PLI Price
EWLS-TS-MECH-HW	Warranty: Mechanical Total Station HW Extend. Warranty and Field SW Maintenance	1	\$669.00
EWLS-TS-MECH-HW-RNST	Warranty Reinstatement: Mechanical Total Station Hardware Extended Warranty & Field Software Reinstatement	1	\$1,005.00
EWLS-TS-SERVO	Warranty: Servo Total Station Hardware Extended Warranty	1	\$975.00
EWLS-TS-SERVO-RNST	Warranty Reinstatement: Servo Total Station System Hardware Extended Warranty Field Software Maintenance	1	\$1,463.00
EWLS-TS-AUTO	Warranty: AutoLock Total Station Hardware Extended	1	\$1,195.00
EWLS-TS-AUTO-RNST	Warranty Reinstatement: AutoLock Total Station Hardware Extended	1	\$1,793.00
EWLS-TS-ROBOT	Warranty: Robotic Total Station Hardware Extended	1	\$1,595.00
EWLS-TS-ROBOT-RNST	Warranty Reinstatement: Robotic Total Station Hardware Extended	1	\$2,393.00
EWLS-ST5	Warranty: Trimble Scanning Total Station Hardware Extended Warranty	1	\$3,990.00
EWLS-ST5-RNST	Warranty Reinstatement: Scanning Total Station HW Ext.	1	\$5,985.00



GIS/Mapping Hardware & Software

Part #	Description	Qty	PLI Price
47288-87	1-Year SW Main. Ext: Positions Mobile Ext. (Perpetual) - Single	1	\$99.00
47289-53	1-Year Hardware Warranty Extension: Juno Series/Laser Ace 3D	1	\$149.00
47288-71	1-Year Software Maintenance Extension	1	\$295.00
47289-71	1-Year Hardware Warranty Extension	1	\$325.00
47288-72	2-Year Software Maintenance Extension	1	\$390.00
46837-95	GPS Correct Extension: ArcPad Software Update	1	\$395.00
47288-84	1-Year SW Main. Ext.: Positions Desktop Add-In (Perpetual) - Single	1	\$399.00
47289-72	2-Year Hardware Warranty Extension	1	\$450.00
45955-95	Field Software Update: TerraSync Professional	1	\$590.00
34191-95	Software Update: GPS Pathfinder Office	1	\$850.00
52726-95	Software Update: GPS Analyst Extension for ESRI ArcGIS	1	\$850.00



Hardware Eligibility: In-Warranty pricing will be available for products within Factory or Extended-Warranty period. Products within Factory or Extended-Warranty period will be subject to Out-of-Warranty pricing. PLI recommends Out-of-Warranty products be inspected, but will not require inspection forms.

Software Eligibility: Standard pricing will be available for products within Factory or Extended-Warranty period. Products that have lapsed in coverage by more than 90 Days will be subject to reinstatement pricing.



Geospatial Positioning Equipment & Accessories

“Protect” Your Business, Back-Up Your Investments!

Introducing TRIMBLE PROTECTED PLUS+ for Survey Equipment



Stay Productive!

- Maintain Fixed, Scalable Maintenance Expenditures!
- Avoid Surprises That Result In Lost Time & Money!
- Retain Peace of Mind; No More “Bad News” Moments!
- Stay Current & Consistent on Software & Firmware!
- Purchase a Plan Through PLI & Any Equipment Under Warranty Will Be Covered By a FREE Rental During Service Repairs!

Trimble Protected Plus+ Features:

Hardware (GNSS Antennas, Control Units, GNSS Receiver Handhelds, Levels, Radios, Tablets & Total Stations)

• Sold in 1-Year Increments	• Includes Protection Against Hardware Defects	• NO DEDUCTABLES, EVER!
• Firmware Updates	• Transferable Ownership (Follows Serial Number)	• Parts & Labor Coverage

Software & Firmware (Control Units, GNSS Receiver Handhelds, Tablets & Total Stations)

• Bug Fixes	• Minor Updates	• Enhancements	• AccessSync, Cloud-Based File Trans. Service
-------------	-----------------	----------------	-----------------------------------------------

NEW! Value-Added Features Give You Protection Against:



Also Included: Annual Inspect-Clean-Calibrate Service for Survey Total Stations!

Total Station Coverage includes one Inspect-Clean-Calibrate service repair per year for each year of extended warranty coverage purchased.

Unparalleled Technical Support & Training



Construction Support

Anthony Pascuzzi | 412.287.3274 | ARP@laserinst.com

Survey Support

Anthony Pascuzzi | 412.287.3274 | ARP@laserinst.com
Aric Mompher | 614.332.6291 | AGM@laserinst.com

GIS/Mapping Support

Jeremy Summerville | 412.552.0848 | JDS@laserinst.com



Construction Training

Sean Geis | 412.439.2743 | SPG@laserinst.com

Survey Training

Anthony Pascuzzi | 412.287.3274 | ARP@laserinst.com

GIS/Mapping Training

Jeremy Summerville | 412.552.0848 | JDS@laserinst.com

- Certified Trainers ■ PDH/CEU Credits Available
- Customize by Location, Duration & Topic



Geospatial Positioning Equipment & Accessories

Verified Accuracy in Real-Time Virtual Reference Station (VRS) Systems

- Instant access to real-time kinematic (RTK) corrections
- Centimeter-accurate corrections tailored to your geographic location
- Built-in redundancy to ensure connectivity, consistency & quality
 - Cost-effective & simple to use
 - Professionally-managed & secure
- Streamlined workflows, done right the first time

What Are VRS Corrections?



A VRS system is one option for providing real-time differential correction to a GNSS receiver. It is the most commonly used technology behind most network correction services worldwide.

Corrections are necessary to eliminate errors and improve the accuracy of GNSS positions in collected data. VRS corrections are available from a variety of public and commercial services.

VRS networks and subscription services provide dual-frequency (L1/L2) real-time differential GPS (DGPS) and in many cases DGNSS (GPS and GLONASS) corrections for accuracy as data is collected.

A VRS service uses data from several (permanent) reference stations to compute corrections that are generally more accurate than corrections from a single reference station. Corrections are then broadcast over the Internet.

Why Do I Need VRS Corrections?

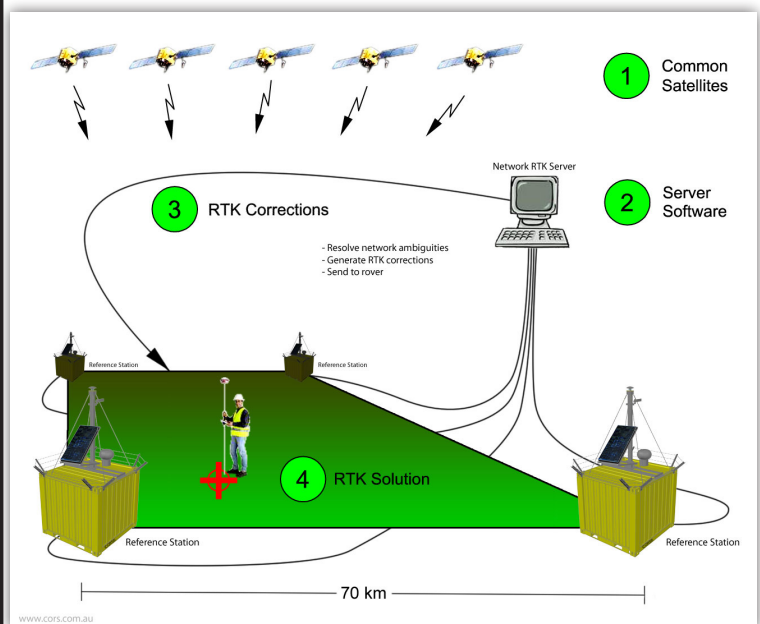
The use of VRS corrections helps ensure the accuracy of GNSS data, independent of the distance to the nearest reference station.

Aren't VRS Corrections Just for Surveyors?

The need for reliable and accurate positioning is not limited to surveying!

Today, a variety of industries including electric and gas utilities, water and wastewater services, and land management projects require mapping products that provide decimeter or better accuracy positioning in real-time.

How it Works:



VRS/Real-Time Network Solutions in Your Area:

(Please Contact Your Local PLI Store for More Information)





Geospatial Positioning Equipment & Accessories

Survey Total Station Accessories

Trimble SX10 & S-Series Robotic Total Station Accessories

Part #	Description	Qty	PLI Price
73840019	Trimble Instrument/Adv. Holder to PC Connection Cable	1	\$65.00
TRB-3	Empire 7.4v Lithium Battery Replacement	1	\$85.90
99511-30	Trimble Li-Ion Battery, 10.8v, S-Series	1	\$155.00
58012029	Trimble 360 Degree Prism, 1in., P.C., 2mm.	1	\$1,015.00
58128001	Trimble 360 Prism w/ Height Adapter	1	\$995.00
AT360	Trimble Active Track 360 Target w/ 7.4v. Li-ion Battery (NOT FOR SX10)	1	\$2,150.00
MT1000	Trimble MultiTrack Target w/ 7.4v. Li-ion Battery	1	\$2,750.00



Spectra Precision Robotic Total Station Accessories

Part #	Description	Qty	PLI Price
59276025-I	SP FOCUS Radio Antenna, 2.4GHz, TNC/R	1	\$15.00
73841019	SP Cable - 0.18m, Hirose 6-Pin to USB or Compact Flash Card	1	\$50.00
73840019	SP Cable - 2.5m, Hirose 6-Pin to PC USB	1	\$65.00
572202326	SP Cable - 3.0m, Car Battery to (Croc Clips) to Hirose 6-Pin	1	\$80.00
53009012	SP Cable - Coiled, External Radio, Hirose 12-Pin to DB9	1	\$85.00
92670-10	SP Battery - Li-ion, 2.8ah, 7.4v	1	\$120.00
/92670			/114.00
53002021	SP Cable - 2.5m, Hirose 6-Pin to DB9 Female RS232	1	\$194.25
101070-00-01	Dual Battery Charger w/ Power Supply	1	\$600.00
58128001	SP 360 Degree Prism w/ Height Adapter	1	\$995.00
58050019	SP SPN External Radio, 2.4GHz, Global	1	\$1,995.00



Survey GNSS Receiver Accessories

Trimble GNSS Receiver Accessories

Part #	Description	Qty	PLI Price
89844-00	Trimble R10 12v Vehicle Adapter for Dual Battery Charger	1	\$45.00
89854-00	Trimble R10 UHF Radio Ant. w/ SMA, 410-470MHz, 0DB	1	\$50.00
89842-00	Trimble R10 Int. Power Supply for Dual Bat. Charger & Receiver	1	\$95.00
89845-00	Trimble R10 Quick Release Adapter, 0.05m	1	\$250.00
89840-00	Trimble R10/R8 Rechargeable Battery, 7.4v, 3700mAh, 27.3Wh	1	\$145.00
89841-00	Trimble R10/R8 Dual Bat. Charger w/ Bat. Slot Inserts, Int. Power	1	\$750.00
44085-46-SUR	Trimble R8 Antenna 5in Whip - TNC 410-470MHz Radio	1	\$50.00
TRB-3	Trimble R8 Empire 7.4v Lithium Battery Replacement	1	\$85.90
92670-10	Trimble R8 Battery - Li-ion, 2.6Ah, 7.4v, 19.2Wh	1	\$120.00
/92670			/114.00
89851-00	Trimble R8 Serial Field Data Cable (7 P Lemo to DB9)	1	\$145.00



Instrument Radio Accessories

Trimble TDL 450 Radio Accessories

Part #	Description	Qty	PLI Price
51871-50-70	SP TDL Radio Antenna, 0Db - 5Db Whip, 450-470MHz	1	\$141.00
44482-00	SP TDL Radio Antenna Mast Kit	1	\$204.75
66656-00	SP TDL Cable - TDL 450 / HPB450 (0S / 1S Lemo; SAE Power)	1	\$208.00
74450-50-70	SP TDL 450 5Db Gain Antenna Kit w/ Case, 450-470MHz	1	\$331.00
74450-14	SP TDL 450H Field Battery/Charger Kit	1	\$406.00



Survey Data Controller Accessories

Trimble TSC3 Accessories

Part #	Description	Qty	PLI Price
82756-00	Trimble TSC3 UV Screen Protectors, Anti-Glare	15	\$13.00
82755-00	Trimble TSC3 Hand Strap	1	\$15.00
82754-00	Trimble TSC3 Stylus Pen Kit (2x Styli, 1x Stylus Tether)	1	\$25.00
82766-00	Trimble TSC3 Antenna for Internal 2.4GHz Radio Module	1	\$25.00
5196-18	Trimble TSC3 Tripod Bracket	1	\$25.95
82752-00	Trimble TSC3 International Power Supply Kit	1	\$95.00
82750-00	Trimble TSC3 Rechargeable Battery w/ Battery Door	1	\$125.00
82753-00	Trimble TSC3 12v Vehicle Charging Cable	1	\$149.00
82758-00	Trimble TSC3 Range Pole Bracket	1	\$155.00
5200-150	Seco Pole Claw Clamp (Plain)	1	\$72.50
5200-065	Seco TSC3/Ranger Claw Cradle	1	\$78.95
5200-16-050	Seco TSC3/Ranger Cradle Assembly	1	\$90.95





Geospatial Positioning Equipment & Accessories

Survey Data Controller Accessories (Continued)

NEW! Trimble TSC7 Accessories

Part #	Description	Qty	PLI Price
121351-01-1	Trimble TSC7 Hand Strap	1	\$20.00
121344-01-1	Trimble TSC7 Shoulder Sling	1	\$25.00
82761-00	Trimble TSC7 Serial Data cable, 1.0m (DB9 to DB9)	1	\$25.00
121355-01-1	Trimble TSC7 Stylus w/ Tether	1	\$35.00
121340-01-1	Trimble TSC7 Glass Screen Protector	1	\$45.00
121354-01-1	Trimble TSC7 Carry Case Shoulder Bag	1	\$60.00
121341-00-1	Trimble TSC7 AC Adapter w/ Int. Cord	1	\$115.00
121341-07-1	Trimble TSC7 AC Adapter w/ CHN Cord	1	\$115.00
104980-01-1	Trimble TSC7 12V Vehicle Adapter	1	\$189.00
121330-01-1	Trimble TSC7 USB I/O Boot	1	\$199.00
121330-02-1	Trimble TSC7 Serial I/O Boot	1	\$199.00
121349-01-1	Trimble TSC7 Pole Mount	1	\$199.00
121320-01-1	Trimble TSC7 Rechargeable Battery 2-Pack	2	\$200.00
121345-01-1	Trimble TSC7 Desktop Hub	1	\$220.00
121343-01-1	Trimble TSC7 External Battery Charge	1	\$299.00
121348-01-1	Trimble TSC7 External Battery Charger w/ Int. Cord	1	\$320.00
121358-01-1	Trimble TSC7 Ext. Battery Charger w/ Int. Cord, Battery 2-Pack	2	\$420.00
110255-00-1	Trimble TSC7 EM110 1D/2D Barcode Imager	1	\$599.00
110236-00-1	Trimble TSC7 EM111 1D/2D Barcode Imager & UHF 902-928 MHz RFID - NA	1	\$1,199.00
111974-00-1	Trimble TSC7 EM111 1D/2D Barcode Imager & UHF 865.6-867.6 MHz RFID - EU	1	\$1,199.00
110238-00-1	Trimble TSC7 EM120 2.4GHz Module	1	\$1,500.00



Trimble Tablet Accessories

Part #	Description	Qty	PLI Price
91473-00	Trimble Tablet Screen Protectors w/ Cleaning Cloth	2	\$16.00
91472-00	Trimble Tablet Stylus w/ Tether	1	\$20.00
91486-00	Trimble Tablet Cironet Radio Antenna	1	\$30.00
91471-00	Trimble Tablet International AC Charging Kit	1	\$75.00
91470-00	Trimble Tablet Standard Battery	2	\$199.00
91487-00	Trimble Tablet Range Pole Bracket	1	\$325.00



Spectra Precision Ranger 3 Accessories

Part #	Description	Qty	PLI Price
82756-00	SP Ranger 3 Anti-Glare Screen Protector Glass Panel	15	\$13.00
59276025-1	SP Focus-Radio Antenna, 2.4GHz TNC/R	1	\$15.00
67501-04	SP Ranger 3 Stylus Pen Kit (2x Styli, 1x Stylus Tether)	1	\$25.00
5196-18	SP Ranger 3 Tripod Hook	1	\$25.95
82752-00	SP Ranger 3 International Power Supply Kit	1	\$95.00
82750-00	SP Ranger 3 Rechargeable Battery w/ Battery Door	1	\$125.00
82753-00	SP Ranger 3 12v Vehicle Charging Cable	1	\$149.00
67501-08	SP Ranger 3 Range Pole Bracket	1	\$147.50
5200-150	Seco Pole Claw Clamp (Plain)	1	\$72.50
5200-065	Seco TSC3/Ranger Claw Cradle	1	\$78.95



NEW! Spectra Precision Ranger 7 Accessories

Part #	Description	Qty	PLI Price
121351-01-2	Spectra Precision Ranger 7 Hand Strap	1	\$20.00
121344-01-2	Spectra Precision Ranger 7 Shoulder Sling	1	\$25.00
121355-01-2	Spectra Precision Ranger 7 Stylus w/ Tether	1	\$35.00
121340-01-2	Spectra Precision Ranger 7 Glass Screen Protector	1	\$45.00
121341-00-2	Spectra Precision Ranger 7 AC Adapter w/ Int. Cord	1	\$115.00
121341-07-2	Spectra Precision Ranger 7 AC Adapter w/ CHN Cord	1	\$115.00
104980-01-2	Spectra Precision Ranger 7 12V Vehicle Adapter	1	\$189.00
121330-01-2	Spectra Precision Ranger 7 USB/Serial I/O Module	1	\$199.00
121330-02-2	Spectra Precision Ranger 7 USB I/O Boot	1	\$199.00
121349-01-2	Spectra Precision Ranger 7 Pole Mount	1	\$199.00
121320-01-2	Spectra Precision Ranger 7 Rechargeable Battery 2-Pack	2	\$200.00
121345-01-2	Spectra Precision Ranger 7 Desktop Hub	1	\$220.00
121343-01-2	Spectra Precision Ranger 7 External Battery Charger	1	\$299.00
121348-01-2	Spectra Precision Ranger 7 External Battery Charger w/ Int. Cord	1	\$320.00
121350-01-2	Spectra Precision Ranger 7 Ext. Battery Charger w/ Int. Cord, Battery 2-Pack	2	\$420.00
110238-00-2	Spectra Precision EM120 2.4GHz Module	1	\$1,500.00





Geospatial Positioning Equipment & Accessories

Mobile Computing Tablet Accessories

Trimble Kenai Tablet Accessories

Part #	Description	Qty	PLI Price
91472-00	Trimble Stylus	1	\$20.00
ACCAA-376	Trimble Kenai Standard Screen Protector Kit	1	\$45.00
ACCAA-260	Trimble Kenai Hand Strap	1	\$59.00
ACCAA-377	Trimble Kenai Anti-Polarizing Screen Kit	1	\$69.00
ACCAA-622	Trimble Kenai Carry Case	1	\$79.00
ACCAA-682	Trimble Kenai Vehicle Charger (12V/24V)	1	\$189.00
ACCAA-118	Trimble Kenai Standard Battery 49WHR	1	\$199.00
ACCAA-775-GC	Trimble Kenai Pole Mounting Kit	1	\$395.00
ACCAA-683	Trimble Kenai Desktop Battery Charger & AC Adapter	1	\$399.00
ACCAA-711	Trimble Kenai Office Docking Station	1	\$499.00



NEW! Trimble T10 Tablet Accessories

Part #	Description	Qty	PLI Price
114125	Trimble T10 Tablet Shoulder Strap	1	\$19.00
114112	Trimble T10 Tablet AC Adapter w/ Power Cord (19V/65W Out)	1	\$69.00
114124	Trimble T10 Tablet Carrying Case	1	\$99.00
114116	Trimble T10 Keyboard w/ Trackpad	1	\$119.00
114113	Trimble T10 Tablet Battery Charger Kit / Single Battery	1	\$199.00
114111	Trimble T10 Tablet BPack, Li-Ion, INDUS, 3S2P, 11.4V, 8000mAh, 123x147x18.4mm	1	\$299.00
114119	Trimble T10 Office Dock (AC Adapter Not Included)	1	\$229.00
114114	Trimble T10 Tablet Battery Charger/Gang Charger	1	\$499.00
114121	Trimble T10 Pole Mount w/ Quick Release	1	\$559.00



Mapping & GIS Equipment Accessories

Trimble R1 GNSS Receiver Accessories

Part #	Description	Qty	PLI Price
102016-01	Trimble R1 Belt Pouch	1	\$35.00
102015-01	Trimble R1 Pole Mount Pouch	1	\$35.00
102017-15	Trimble R1 External Antenna	1	\$39.00



Trimble R2 GNSS Receiver Accessories

Part #	Description	Qty	PLI Price
101071-00-01	Trimble R2 Power Supply & Cord for Dual Battery Charger	1	\$95.00
92670	Trimble R2 Li-Ion, 2.6Ah, 7.4v, 19.2Wh Battery	1	\$114.00
39870	Trimble R2 Backpack	1	\$175.00
101070-00-01	Trimble R2 Dual Battery Charger w/ Power Supply & Cord	1	\$600.00



Trimble GeoExplorer 6000 & Geo 7 Series Accessories

Part #	Description	Qty	PLI Price
88015-00	Trimble Geo 6000/Geo 7 Series USB Data Cable (1.8m)	1	\$15.00
93773-03/88006-13	Trimble Geo 7 Series Hand Strap/ Geo 6000 Series Handstrap Kit	1	\$15.00/\$20.00
88055-13	Geo 6000/Geo 7 Series Replacement Stylus Kit	1	\$20.00
93601-02	Trimble Geo 6000/Geo 7 Series Antiglare Screen Protector	2	\$20.00
93598-01	Trimble Geo 7 Series Soft Pouch	1	\$40.00
88049-03	Geo 6000/Geo 7 Series USB to Serial Converter Cable	1	\$45.00
88014-00	Trimble Geo 6000/7 AC Power Supply w/ International Adapt.	1	\$50.00
88056-00	Geo 6000/Geo 7 Series 12v DC Power Supply (15v 1A Output)	1	\$50.00
70800-15	Trimble Geo 6000/7 Ext. Antenna Cable (TNC to SMB -1.5m)	1	\$70.00
50643-3M	Hurricane/Zephyr Geo Ant. Cable, 3M	1	\$105.00
50643-1.5M	Hurricane/Zephyr Antenna Cable	1	\$113.25
93599-00	Trimble Geo 7 Series Bracket	1	\$135.00
50643-5M	5M Geo XH/Hurricane Cable, SMB Male/TNC	1	\$145.00
88004-04	Trimble Geo 6000/Geo 7 Series Li-Ion Bat. Pack (11.1v, 2.5Ah)	1	\$195.00
94916-00	Trimble Geo 7 Series Monopole Kit	1	\$495.00
93879-00	Trimble Rangefinder Module for Geo 7 Series	1	\$1,195.00



Chris Walker | Rental Manager
CRW@laserinst.com



RENT THE LATEST & GREATEST!

DAILY, WEEKLY & MONTHLY RATES
ALL NECESSARY ACCESSORIES
SHIPPING & PICK-UP OPTIONS
CALL 724.266.1600 TO LEARN MORE!



Geospatial Positioning Equipment & Accessories

Underground/Utility Locators

CST/Berger Magnetic Locators

Part #	Description	Qty	PLI Price
19-202SC	CST/Berger Magna-Trak MT202 Magnetic Locator	1	\$599.00



Leica Geosystems Underground Locators & Detection Solutions

Part #	Description	Qty	PLI Price
798643	Leica Geosystems DigiCat 550i xf (Xtra Frequency) Utility Service Locator (60Hz) w/ Depth Indicator (ft/in/metric selectable)	1	\$1,395.00
798648	Leica Geosystems DigiTex 100 xf (Xtra Frequency) Signal Generator	1	\$1,080.00
798649	Leica Geosystems DigiTex 300 xf (Xtra Frequency) Signal Generator	1	\$1,480.00
6011143	Leica Geosystems ULTRA Locator 5 Watt Standard Kit (Includes: ULTRA Standard Locator, Standard 5 Watt Transmitter, ULTRA 5" (125mm) Signal Clamp, System Bag, Quick Guide & User Manual)	1	\$5,092.00
6011142	Leica Geosystems ULTRA Locator 12 Watt Standard Kit (Includes: ULTRA Standard Locator, Standard 12 Watt Transmitter, Ultra 5" (125mm) Signal Clamp, System Bag, Quick Guide & User Manual)	1	\$5,762.00
6011141	Leica Geosystems ULTRA Locator 12 Watt Advanced Kit (Includes: ULTRA Advanced Locator, Advanced 12 Watt Transmitter, ULTRA 5" (125mm) Signal Clamp, System Bag, Quick Guide & User Manual)	1	\$7,102.00
818711	Leica Geosystems ULTRA Transmitter Dual Output Cable	1	\$302.00
842433	Leica Geosystems Receiver Stethoscope	1	\$469.00
818709	Leica Geosystems ULTRA Transmitter battery Pack	1	\$614.00
731053	Leica Geosystems DigiMouse, Signal Point	1	\$675.00
818708	Leica Geosystems A Frame Electrical Fault Locator	1	\$726.00
796703	Leica Geosystems DigiTrace 50 Signal Trace, 165ft (50m)	1	\$995.00
796704	Leica Geosystems DigiTrace 80 Signal Trace, 260ft (80m)	1	\$1,295.00



6011496	Leica Geosystems DS2000 Utility Detection GPR Cart Kit	1	\$23,500.00
---------	--------------------------------------------------------	---	-------------

Schonstedt Magnetic & Utility Locators

Part #	Description	Qty	PLI Price
REX	Schonstedt REX Pipe & Cable Locator	1	\$2,845.00
XTPC-33-HC	Schonstedt Cable & Pipe Locator	1	\$2,295.00
XTPC-82-HC	Schonstedt Cable & Pipe Locator	1	\$2,317.00
GA-52CX	Schonstedt Magnetic Locator	1	\$840.00
GA-72CD	Schonstedt Magnetic Locator	1	\$995.00
GA-92XTD	Schonstedt Magnetic Locator	1	\$964.00
MAGGIE	Schonstedt Magnetic Locator	1	\$826.00

Ask About Our REX & GA92XTD Kit!



SubSurface Instruments, Inc. Magnetic Locators & Water Leak Detectors

Part #	Description	Qty	PLI Price
ML-1	SubSurface Instruments Magnetic Locator	1	\$783.00
ML-1M	SubSurface Instruments Magnetic Locator	1	\$828.00
ML-3S	SubSurface Instruments Waterproof Magnetic Locator - Small	1	\$895.00
ML-3L	SubSurface Instruments Waterproof Magnetic Locator - Long	1	\$945.00
PL-2000	SubSurface Instruments Pipe & Cable Locator	1	\$3,397.00
LD-7	SubSurface Instruments Water Leak Detector	1	\$1,408.00
LD-8	SubSurface Instruments Water Leak Detector	1	\$1,795.00
LD-12	SubSurface Instruments Water Leak Detector	1	\$3,325.00
LD-15	SubSurface Instruments Water Leak Detector	1	\$3,595.00
LD-18	SubSurface Instruments Water Leak Detector	1	\$5,395.00





**Precision Laser
& Instrument, Inc.**
www.laserinst.com

Construction • Survey • GIS

Sales • Service • Rentals • Training • Support

Monday-Friday, 7:30am-4:30pm | Saturday, 8:00am-12:00pm (Pittsburgh Only)



Locations:
(Full Addresses On Back Cover)

Pittsburgh, PA (HQ): 724.266.1600
Columbus, OH: 614.759.1000
Cincinnati, OH: 513.539.0022
Akron, OH: 330.633.4900
Charleston, WV: 304.776.1831
Bridgeport, WV: 304.933.3036

Geospatial Positioning Equipment & Accessories

Trimble Forensics

Collect. Document. Analyze.



Crashes. Crime Scenes. Security.

A Powerful Solution for Today's World



Trimble Forensics is a powerful package of hardware and software designed specifically to help law enforcement and private sector security agencies handle the toughest information-collection challenges. It comes with unparalleled service, training and local support from experts who understand and embrace the law enforcement mission.

Featuring a broad selection of survey total stations, scanners, GIS/mapping data collectors and software, Trimble Forensics enables law enforcement personnel. Furthermore, Trimble Forensics scanners and software, including an exclusive SmartRooms feature that automates the creation of animations and drawings of complex rooms and buildings, make it easier for security planners to protect facilities and people.

Contact Your Local PLI Sales Rep. or Call 724.266.1600 To Learn More!

STEP ONE:

Choose the field capture hardware that fits your operation.



STEP TWO:

Select the field collection device designed for the way you work.



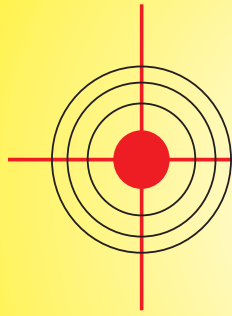
STEP THREE:

Pick the right software for the field and office.



Shop Online! E-Commerce Store: www.laserinst.com

PLI Winter 2019 Supplies & Accessories Catalog (Ver. 8.4)



Precision Laser & Instrument, Inc.

www.laserinst.com

Construction • Survey • GIS

Sales Service Rentals Training Support

A Dedicated Business Partner & One-Stop Shop

We are Precision Laser & Instrument, Inc., an “Authorized Distribution Partner” of Trimble equipment and accessories. Our company provides comprehensive positioning solutions for the Construction, Surveying and GIS industries by offering:

- **Sales** of top-quality laser, optical and positioning equipment, field supplies and accessories
- **Service** centers that have made us a “Preferred Service Provider” and “Authorized Warranty Center” for manufacturers including Trimble®, Spectra Precision®, Nikon®, CST/Berger®, Leica®, AGL®, Apache® and PLS®
- **Rentals** with a “Rent-to-Purchase” (Credit Option) for cost-effective solutions to supplement existing equipment
- **Training** and **Technical Support** that is available with every sale or rental made, and that can be customized by length and location to fit all of your job-specific needs



Rod Creese (Partner), Rob Barth (Partner),
Mark Maximovich (VP of Operations & Finance)

Our Purpose

“We will provide sales, rentals, service and “concept to completion support” of the highest quality laser, optical and GPS equipment and related technologies through strong, long-term relationships with our customers.”

Our Role

“We are trusted partners in your business, committed to providing the expertise and domain knowledge to meet your full range of equipment needs long after the initial sale.”

Our Promise

“We will go beyond selling a product to offer a complete, customized solution, ensuring maximum return on your equipment investment and ultimate business success.”

Our Partners



Pittsburgh, PA

85 11th Street
Ambridge, PA 15003
Ph: 724.266.1600
Fax: 724.266.8161

Columbus, OH

372 Morrison Rd., Ste. D
Columbus, OH 43213
Ph: 614.759.1000
Fax: 614.759.7059

Cincinnati, OH

820-B Lebanon St.
Monroe, OH 45050
Ph: 513.539.0022
Fax: 513.539.0033

Akron, OH

2567 S. Arlington Rd. # 5
Akron, OH 44319
Ph: 330.633.4900
Fax: 330.633.4999

Charleston, WV

504 Old Goff Mtn. Rd.
Cross Lanes, WV 25313
Ph: 304.776.1831
Fax: 304.776.6790

Bridgeport, WV

919 West Main St.
Bridgeport, WV 26330
Ph: 304.933.3036
Fax: 304.933.3584