



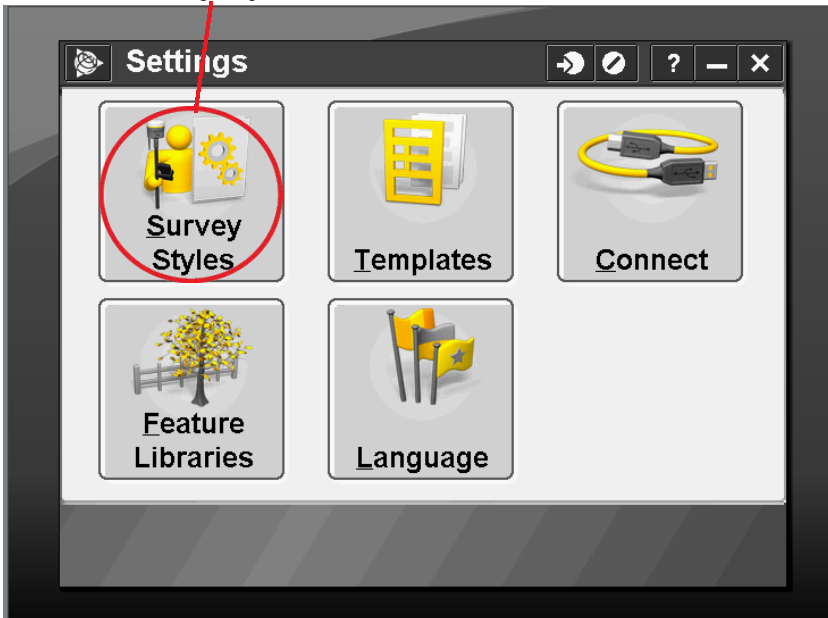
PLI Support Guide: RTK Survey Style – R10 & Access

Summary: This guide will show you how to setup the RTK Survey Style on a Data Collector w/ Trimble Access and an R10 Receiver.

1. Open up Trimble Access and click on “Settings”.



2. Click on “Survey Styles.”



Pittsburgh Office

85 11th Street
Ambridge, PA 15003
Ph: (724) 266-1600
Fax: (724) 266-8161

Columbus Office

372 Morrison Rd., Suite D
Columbus, OH 43213
Ph: (614) 759-1000
Fax: (614) 759-7059

Cincinnati Office

820-B Lebanon Street
Monroe, OH 45050
Ph: (513) 539-0022
Fax: (513) 539-0033

Akron Office

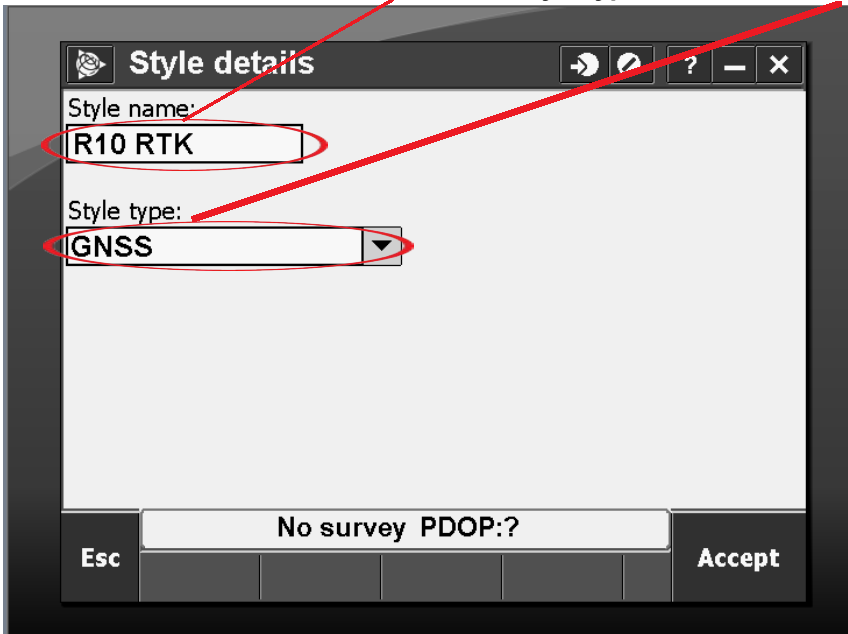
2567 S. Arlington Rd., Suite 5
Akron, OH 44319
Ph: (330) 633-4900
Fax: (330) 633-4999

WV Office

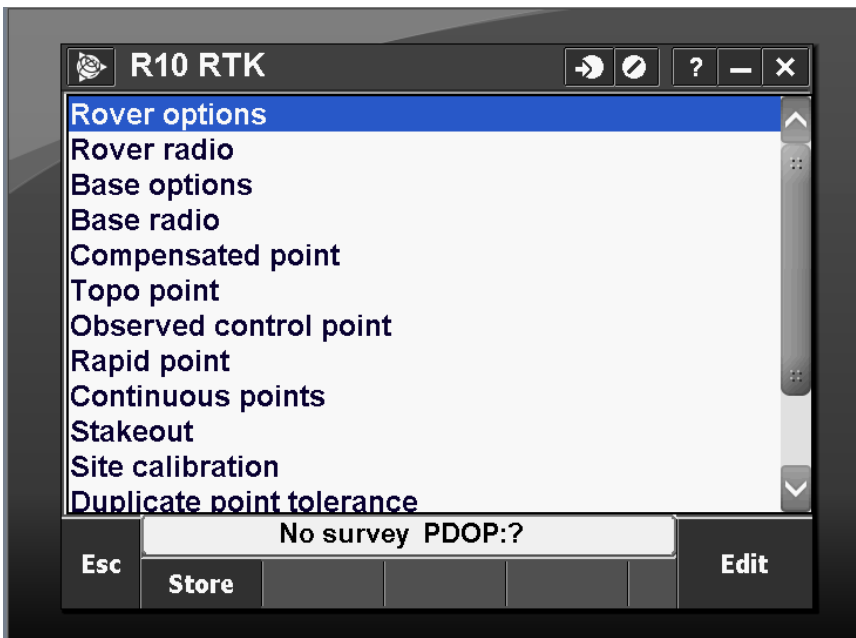
504 Old Goff Mtn. Rd.
Cross Lanes, WV 25313
Ph: (304) 776-1831
Fax: (304) 776-6790



3. Click "New" and name it "RTK Internal." Style type should be "GNSS," since we are using GPS.



4. After your Survey Style is created, go into the Survey Styles Settings to set your defaults.



Pittsburgh Office

85 11th Street
Ambridge, PA 15003
Ph: (724) 266-1600
Fax: (724) 266-8161

Columbus Office

372 Morrison Rd., Suite D
Columbus, OH 43213
Ph: (614) 759-1000
Fax: (614) 759-7059

Cincinnati Office

820-B Lebanon Street
Monroe, OH 45050
Ph: (513) 539-0022
Fax: (513) 539-0033

Akron Office

2567 S. Arlington Rd., Suite 5
Akron, OH 44319
Ph: (330) 633-4900
Fax: (330) 633-4999

WV Office

504 Old Goff Mtn. Rd.
Cross Lanes, WV 25313
Ph: (304) 776-1831
Fax: (304) 776-6790



5. Click on "Rover options." Verify your Survey type is "RTK" and Broadcast format is "CMRx."

Rover options

Survey type: **RTK**

Broadcast format: **CMRx**

Use station index: **Any**

Prompt station index:

1/5

No survey PDOP:?

Esc Accept

6. Click on "1/5" to go to Page 2. Select your "Antenna Type" for your Rover.

Rover options

Satellite differential: **Off**

Elevation mask: **10°**

PDOP mask: **6.0**

Antenna Type: **R10 Internal**

2/5

No survey PDOP:?

Esc Accept

Pittsburgh Office

85 11th Street
Ambridge, PA 15003
Ph: (724) 266-1600
Fax: (724) 266-8161

Columbus Office

372 Morrison Rd., Suite D
Columbus, OH 43213 Ph:
(614) 759-1000
Fax: (614) 759-7059

Cincinnati Office

820-B Lebanon Street
Monroe, OH 45050
Ph: (513) 539-0022
Fax: (513) 539-0033

Akron Office

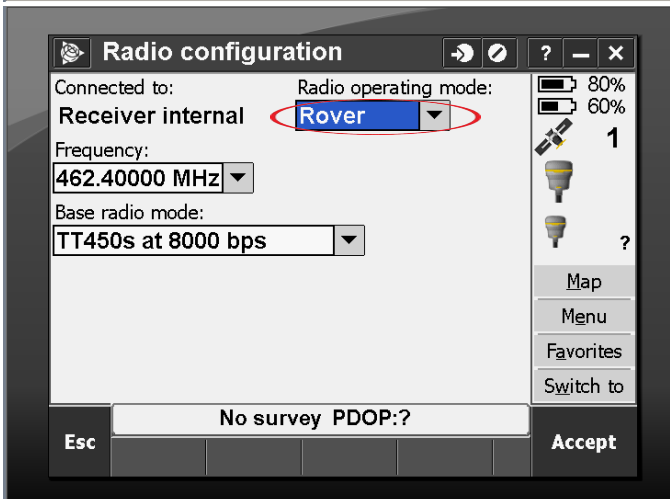
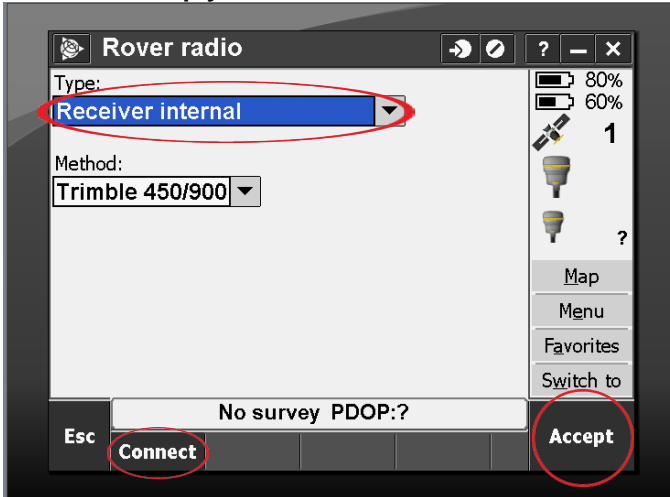
2567 S. Arlington Rd., Suite 5
Akron, OH 44319
Ph: (330) 633-4900
Fax: (330) 633-4999

WV Office

504 Old Goff Mtn. Rd.
Cross Lanes, WV 25313
Ph: (304) 776-1831
Fax: (304) 776-6790



7. Click "Accept" and go to the "Rover radio" you want to be on "Receiver Internal." Notice at the bottom of the screen there is a "Connect" button. That is where you can connect to configure your radio frequency. Make sure your operating mode is set to "Rover," and write down your Frequency and Base Radio Mode. This will be important when we set up your base radio.



Pittsburgh Office

85 11th Street
Ambridge, PA 15003
Ph: (724) 266-1600
Fax: (724) 266-8161

Columbus Office

372 Morrison Rd., Suite D
Columbus, OH 43213
Ph: (614) 759-1000
Fax: (614) 759-7059

Cincinnati Office

820-B Lebanon Street
Monroe, OH 45050
Ph: (513) 539-0022
Fax: (513) 539-0033

Akron Office

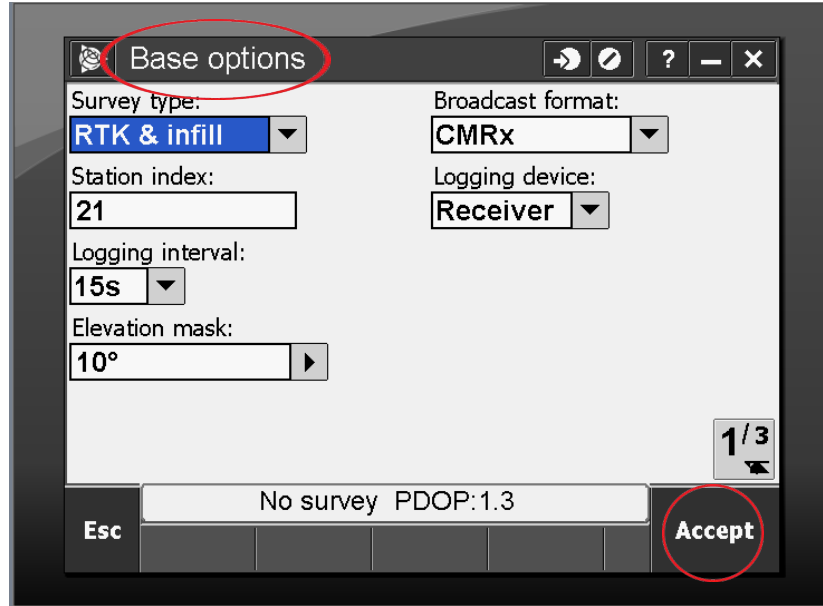
2567 S. Arlington Rd., Suite 5
Akron, OH 44319
Ph: (330) 633-4900
Fax: (330) 633-4999

WV Office

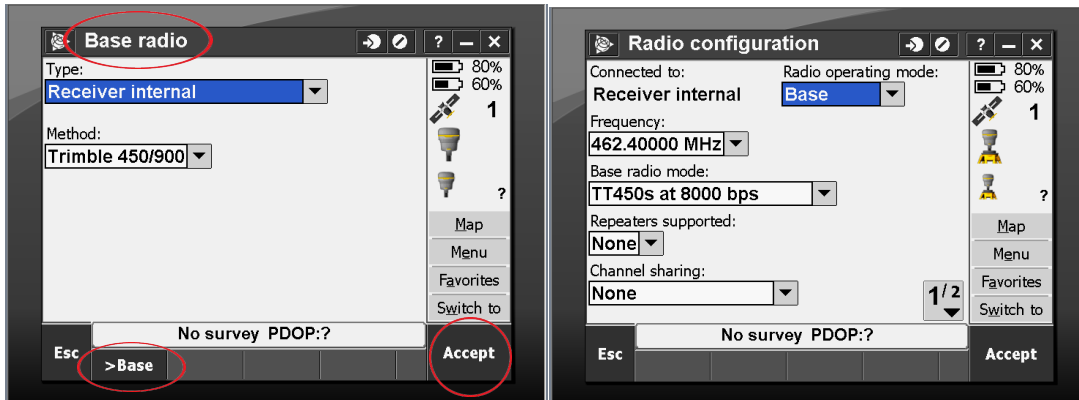
504 Old Goff Mtn. Rd.
Cross Lanes, WV 25313
Ph: (304) 776-1831
Fax: (304) 776-6790



8. Click "Accept" and go into "Base options." As before, you want the same Survey Type and Broadcast format. Set your antenna type to what antenna you are using. In this case, we are using a Trimble R10.



9. Click "Accept" and go into "Base radio." In this case, we are using the internal radio in the base antenna, but if you are using an external radio you change that within the "Type:" At the bottom of the screen, you will notice ">Base." This will switch you into Base Mode, allowing you to connect to the base radio.



Now check your notes and be sure that you have the same Frequency and Base Radio Mode selected so that the Base and Rover communicate with each other. Click "Accept" and store this Survey Style.

10. All other settings are options, but do not interfere with the communication of the base to the rover. You're all set!

Pittsburgh Office

85 11th Street
Ambridge, PA 15003
Ph: (724) 266-1600
Fax: (724) 266-8161

Columbus Office

372 Morrison Rd., Suite D
Columbus, OH 43213
Ph: (614) 759-1000
Fax: (614) 759-7059

Cincinnati Office

820-B Lebanon Street
Monroe, OH 45050
Ph: (513) 539-0022
Fax: (513) 539-0033

Akron Office

2567 S. Arlington Rd., Suite 5
Akron, OH 44319
Ph: (330) 633-4900
Fax: (330) 633-4999

WV Office

504 Old Goff Mtn. Rd.
Cross Lanes, WV 25313
Ph: (304) 776-1831
Fax: (304) 776-6790



**Precision Laser
& Instrument, Inc.**
www.laserinst.com

Construction • Survey • GIS

Sales • Service • Rental • Training • Support

Pittsburgh Office

85 11th Street
Ambridge, PA 15003
Ph: (724) 266-1600
Fax: (724) 266-8161

Columbus Office

372 Morrison Rd., Suite D
Columbus, OH 43213
Ph: (614) 759-1000
Fax: (614) 759-7059

Cincinnati Office

820-B Lebanon Street
Monroe, OH 45050
Ph: (513) 539-0022
Fax: (513) 539-0033

Akron Office

2567 S. Arlington Rd., Suite 5
Akron, OH 44319
Ph: (330) 633-4900
Fax: (330) 633-4999

WV Office

504 Old Goff Mtn. Rd.
Cross Lanes, WV 25313
Ph: (304) 776-1831
Fax: (304) 776-6790