



QML800 Laser Layout Improves Canadian Drywall Company's Performance

Waterloo, Ontario, November 2015

Grassing Drywall & Acoustics, Ltd., an 65 year-old, fourth-generation, family-owned firm specializing in high-end commercial drywall installations, has found its new Spectra Precision laser layout system is offering significantly faster layouts with the added bonus of error-free work.

When Rob Grassing, a great-grandson of the founder, recently read about the new QML800 laser layout system and the performance it promised, he recommended it to his management. They said, according to Rob, "If you think it will work, go ahead and get it." On the very first job with the QML800, a complex layout with 10 elevations, its value was immediately confirmed.

"Our first job with the QML800 happened to be a complicated curved ten-tier ceiling. It provided a point of reference for the type of efficiencies we are now regularly achieving," said Grassing. To achieve the benchmark, the layout was first done using conventional methods that took two men two days to complete. "After training on the QML800, which took thirty minutes, we did the same curved ten-tier ceiling job with one man in only four hours – a saving of 28 man-hours," Grassing added.

Saving Time

The QML800 is an easy-to-learn, cost-effective method to layout interior points. Instead of conventional labor-intensive measuring using tapes, the QML800 uses two laser beams to illuminate a visible "X" at the desired location.

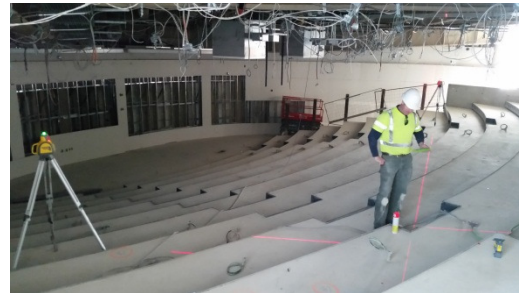
"Instead of taking prints home to calculate points, and sometimes, with intricate detail, having to improvise to make it look like it was intended, the QML800 uses CAD layout points imported to the QML800 controller. Simply select the desired point on the controller and the laser positions a visible "X" at the correct location that's 100 percent accurate even on



curves and other complicated designs” explained Grassing. Setup is accomplished through a quick process location two known points on the jobsite. Another advantage of the QML800 is that it marks the location of the track on the ceiling at the same time as the floor eliminating the need to plumb up mark at a later time.

Error-free

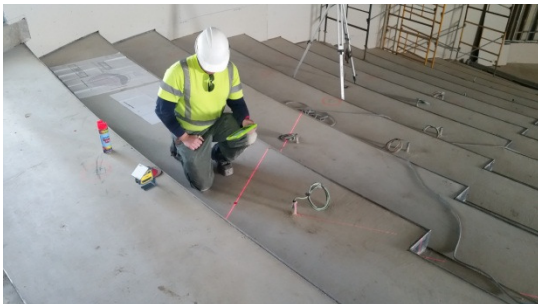
In addition to the substantial timesaving, an added benefit, according to Grassing, is that the QML 800 provides 100 percent accurate and error-free layouts. Grassing notes that layout errors -- cumulative and difficult to trace -- can be very costly.



“If our installation is in error, the electrical and mechanical contractors, who follow and measure off our walls, will also be in error; and they charge us back for their added costs,” said Grassing.

ROI

The company is currently completing the Global Innovation Exchange, a 300,000 sq. ft. building on the Wilfrid Laurier University campus in Waterloo that will house the



university’s School of Business and Economics and the Department of Mathematics. “Had we had the QML800 at the beginning of this job, we would have paid for it on this one job alone,” said Grassing. Grassing estimates the QML800 will have paid for itself within 200 saved man-hours. “It’s the most valuable tool on our job site,” said Grassing.

About Grassing Drywall and Acoustics, Ltd.

Headquartered in Waterloo, Ontario, Canada, Grassing Drywall and Acoustics, Ltd., a union shop with two-dozen employees, specializes in high-end commercial drywall installations and is active throughout the southwestern Ontario region.

About Spectra Precision laser layout systems

Spectra Precision is the brand name for laser tools from the Trimble Construction Tools Business. The Trimble Construction Tool Business supplies precision tools and solutions to the construction and surveying markets to enhance productivity. Laser and optical

instruments solutions from the Trimble Constructions Tools Business target general contractors and specialty contractors serving large and small commercial job sites as well as residential builders and remodelers. In addition, a full line of accessories is available to meet the needs of the surveying, engineering and construction markets.

Media Contact:

Patrick Vrillon, Spectra Precision Division
Marketing and Communications Director
Office: +33 228 093 929
patrick_vrillon@spectraprecision.com