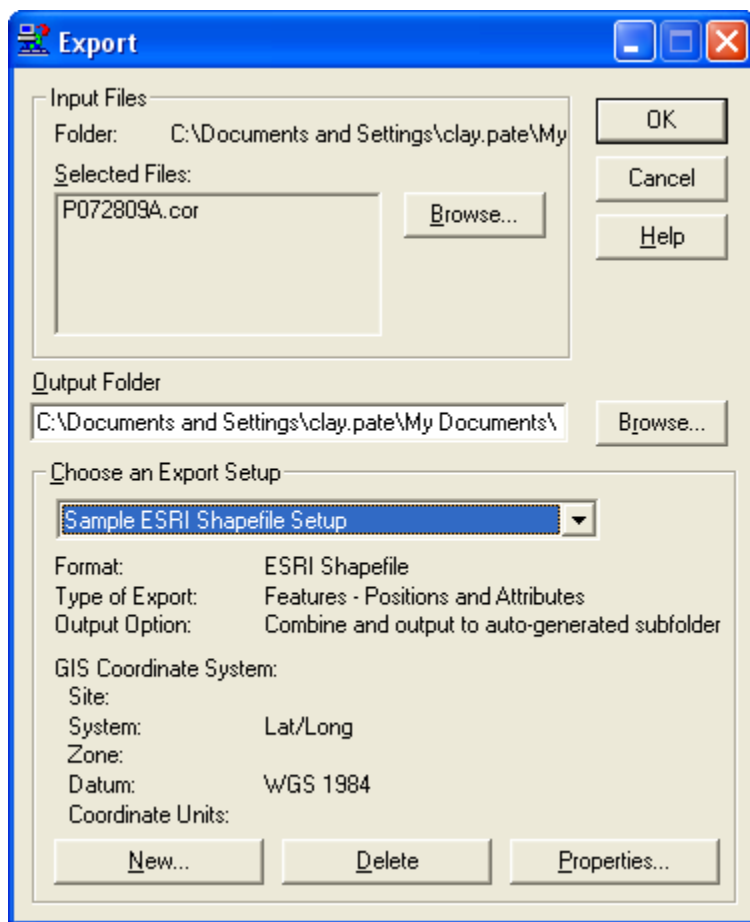


Exporting Point Features in a PNEZD File from Pathfinder Office

In Pathfinder office we can create a custom export for Point Number, Northing, Easting, Elevation and Description (P,N,E,Z,D) format for use with CAD programs.

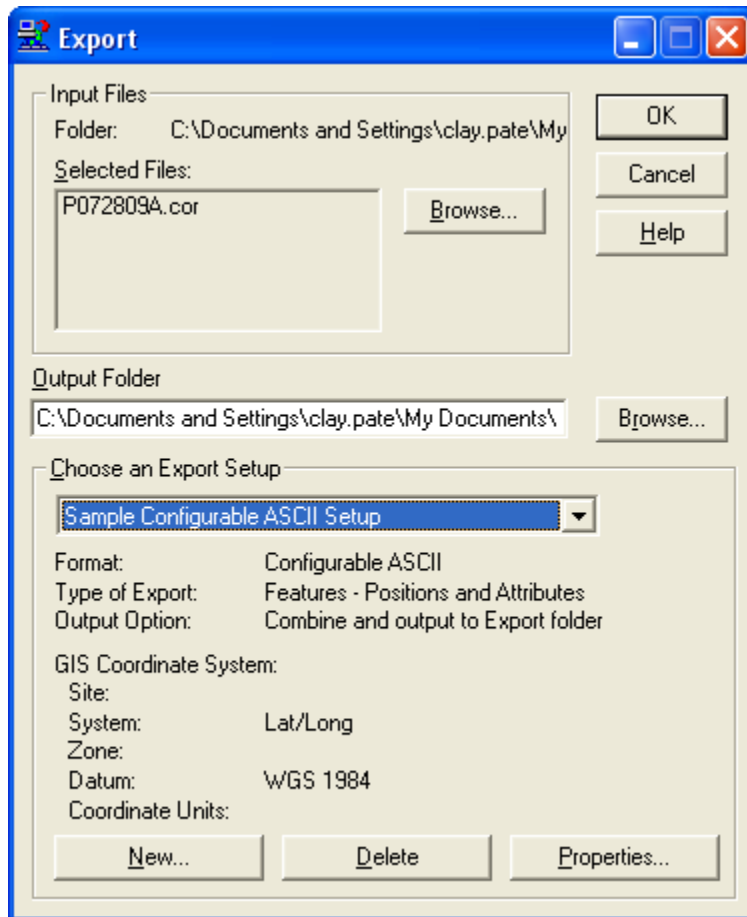
After you have downloaded and differentially correct your data click on Utilities/Export.

The Export Dialog Opens.

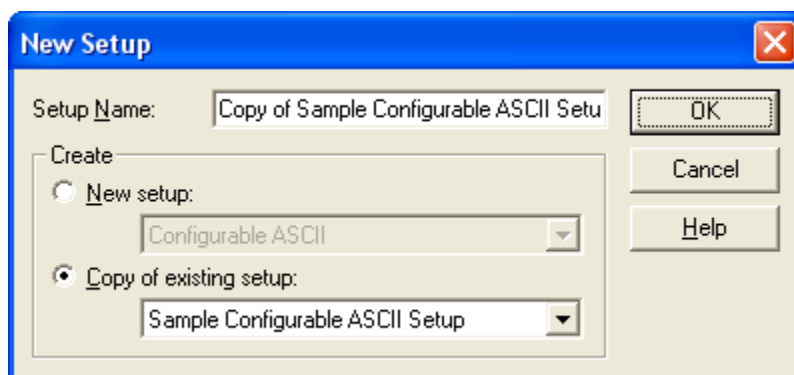


- **Input Files** – If you have been working with a file it should show up automatically under Selected Files. If there are no files then click on Browse button and select the corrected file(s).
- **Output Folder** – This is the location of where the file is going to be created on your computer.

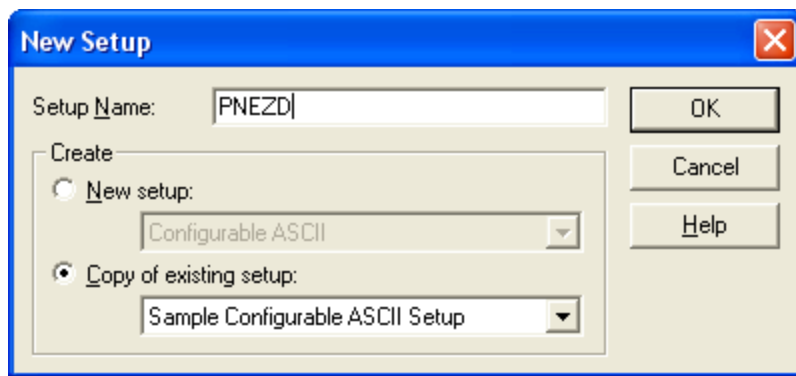
- **Choose an Export Setup** – Click on the drop down list and select Sample Configurable ASCII Setup.



Click on New.



- **Setup Name** – Enter PNEZD.
- **Create** – Click on Copy of existing setup.



New Setup

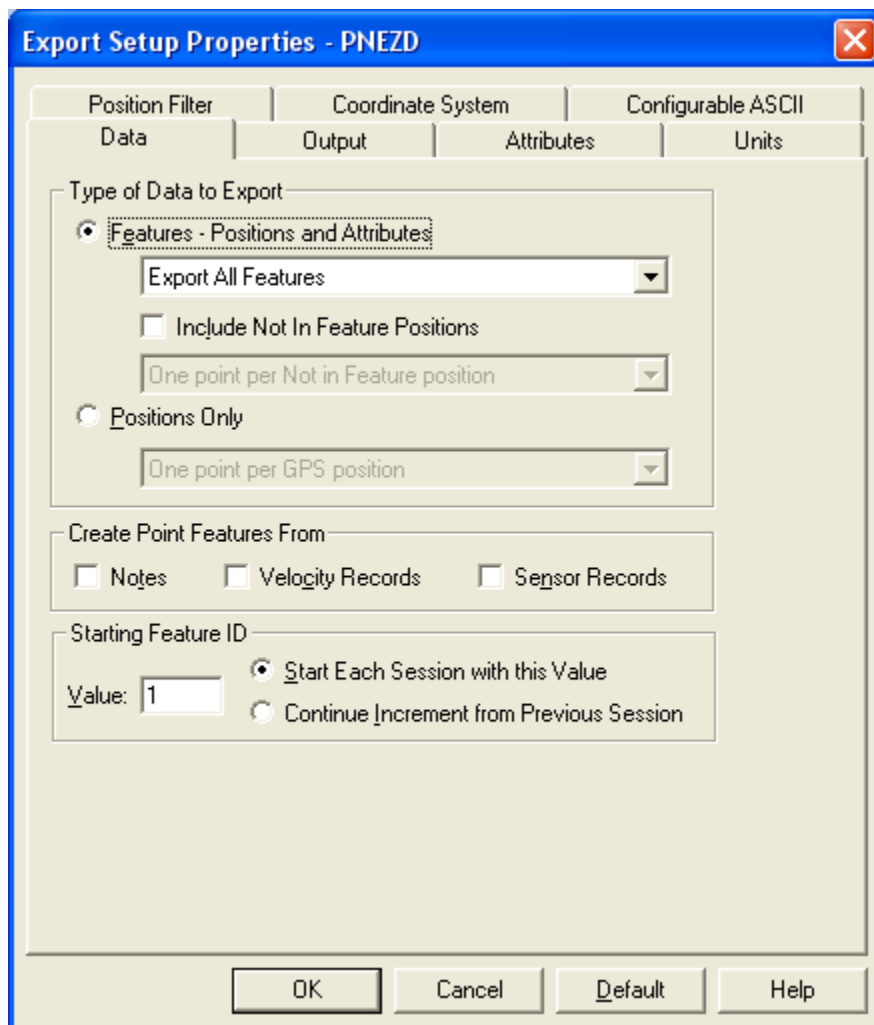
Setup Name:

☐ Create
☐ New setup:

☒ Copy of existing setup:

OK Cancel Help

Click on OK.



Export Setup Properties - PNEZD

Position Filter | Coordinate System | Configurable ASCII

Data | Output | Attributes | Units

Type of Data to Export

☒ Features - Positions and Attributes

☐ Include Not In Feature Positions

☐ Positions Only

Create Point Features From

☐ Notes ☐ Velocity Records ☐ Sensor Records

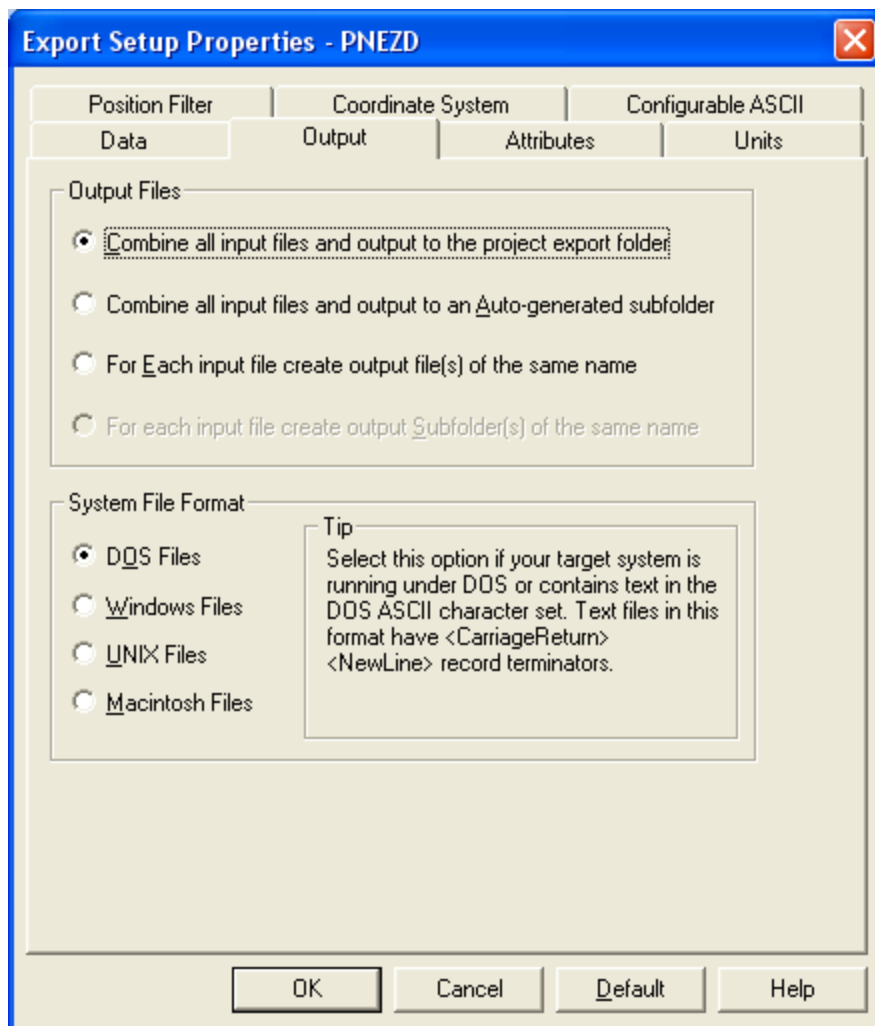
Starting Feature ID

☒ Start Each Session with this Value

☐ Continue Increment from Previous Session

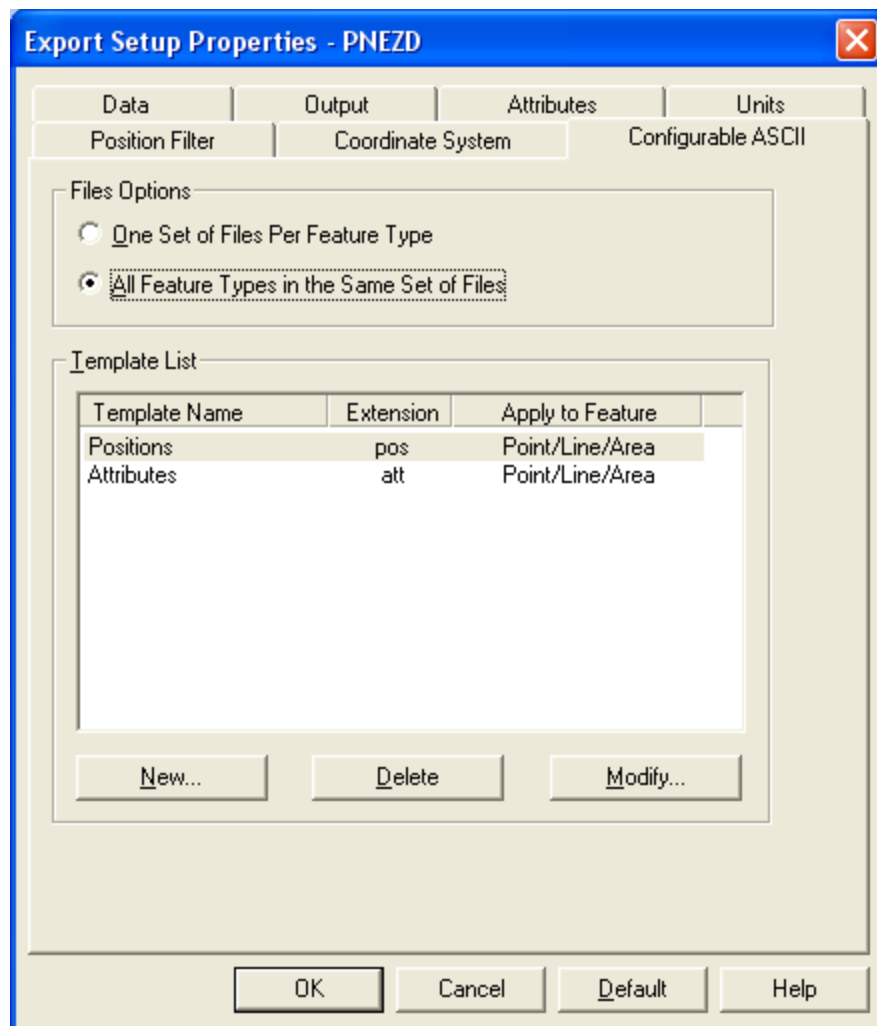
OK Cancel Default Help

Click on the Output tab.

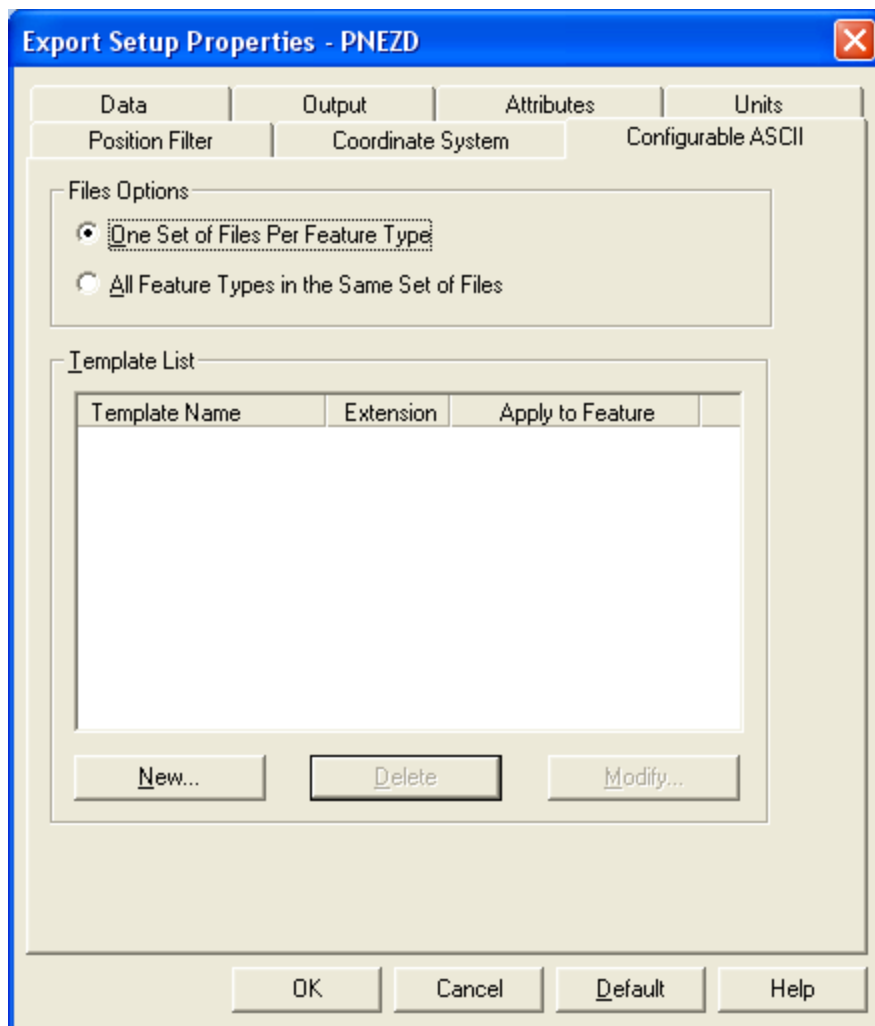


- **Output Files** – Select the best method for managing the files that are created during the export.

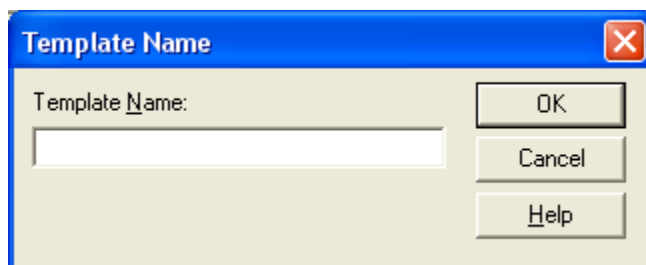
Click on the Configurable ASCII Tab.



Delete the Positions and Attributes templates.



Click on New.



Name the Template PNEZD.

Click on OK.

- **Output File Extension** – Enter the three digit extension of the file you want to create.
Note – Do not enter the . since it is understood by the software.
- **Apply to** – Remove the checks for lines and areas.
- **Field format** – Select either Delimited or Fixed Column.
- **Delimiters** – Select the Delimiters necessary for the file format needed by the software that is going to import the exported file.

ASCII Export Template Editor: PNEZD

Output File Extension: Apply to ☒ Points ☐ Lines ☐ Areas

☐ Use Template as Heading

Field Format
☒ Delimited
☐ Fixed Column

Delimiters
Field: Other:
Text: Decimal:

Macro Palette

{Latitude}	{Northing}	{Feature ID}	{Header Start}	{GPS Time}
{Longitude}	{Easting}	{Feature Name}	{Footer Start}	{Text: }
{HAE}	{MSL}	{Attributes}	{Hdr/Ftr End}	New Line

Template Worksheet

OK Cancel Clear Template Help

- **Macro Palette**

Click on the Following buttons in order.

Feature ID (Point Number), Northing, Easting, MSL, Attributes.

ASCII Export Template Editor: PNEZD

Output File Extension: Apply to ☒ Points ☐ Lines ☐ Areas

☐ Use Template as Heading

Field Format
☒ Delimited
☐ Fixed Column

Delimiters
Field: Other:
Text: Decimal:

Macro Palette

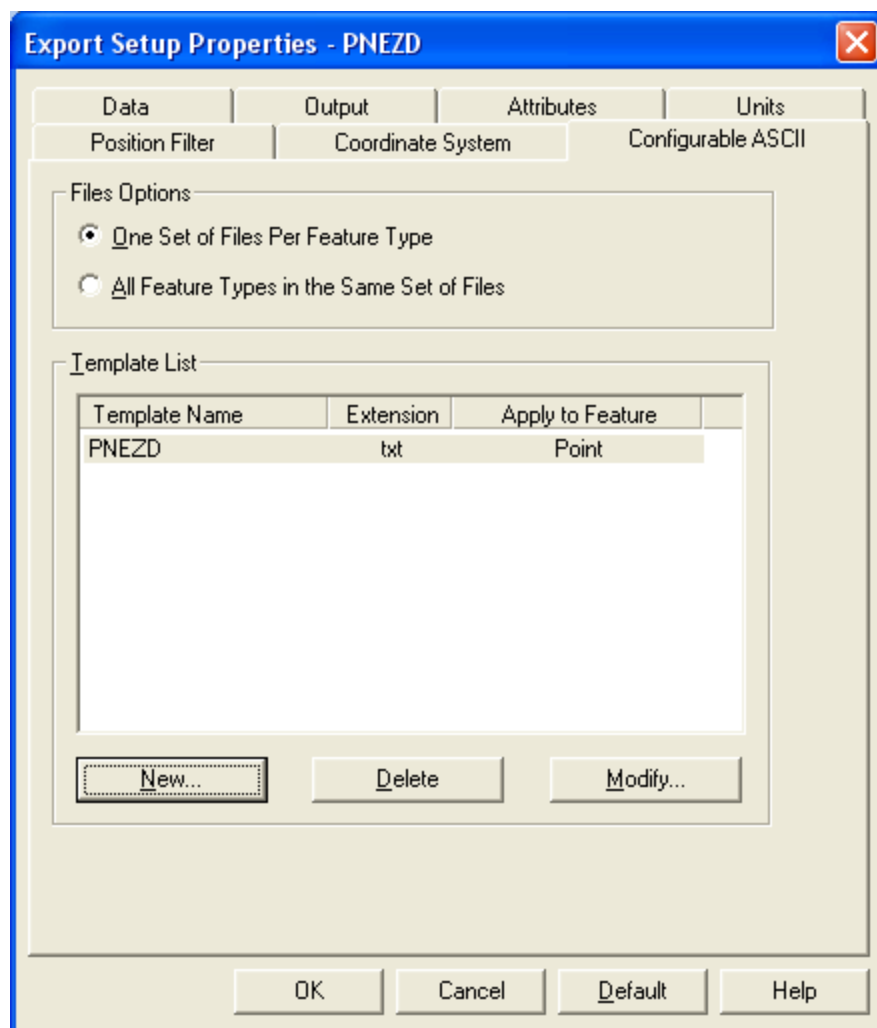
{Latitude}	{Northing}	{Feature ID}	{Header Start}	{GPS Time}
{Longitude}	{Easting}	{Feature Name}	{Footer Start}	{Text: }
{HAE}	{MSL}	{Attributes}	{Hdr/Ftr End}	New Line

Template Worksheet

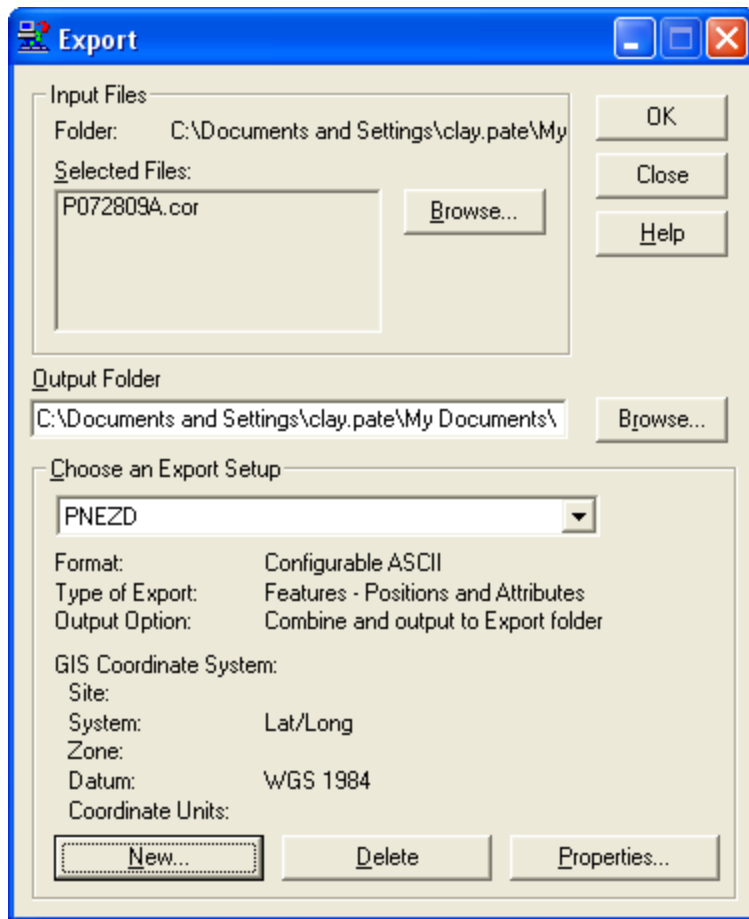
{Feature ID} {Northing} {Easting} {MSL} {Attributes}

OK Cancel Clear Template Help

Click OK.



Click OK.



Note – Before exporting your file verify that the coordinate system is correct. If it not correct click on Options/Coordinate System. Set the coordinate system of Pathfinder Office to match the coordinate system needed for the file being exported.

Click OK to export the file.