



Trimble RealWorks Forensics

OFFICE SOFTWARE



KEY FEATURES

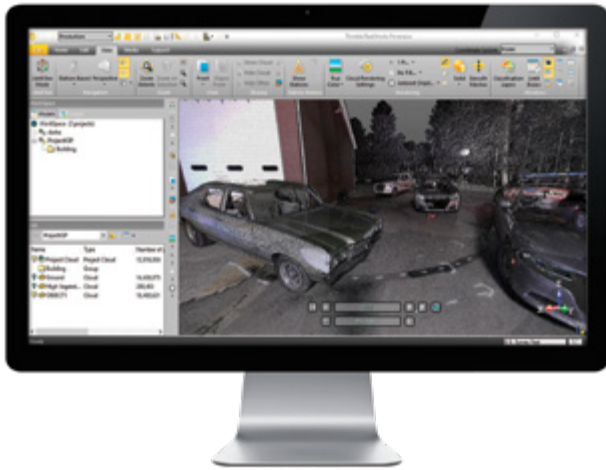
- ▶ Simple registration, segmentation and classification of 3D laser scan data
- ▶ Specifically designed to support reconstruction of crime/collision scene data
- ▶ Manage, process and analyze large datasets
- ▶ Create many types of intermediate or final deliverables
- ▶ Generate registration reports
- ▶ Automatic registration with or without targets

Learn more: forensics.trimble.com/realworks





Trimble® RealWorks® Forensics OFFICE SOFTWARE



SYSTEM REQUIREMENTS

Operating System

- ▶ Microsoft® Windows® 7, 8 or 10 – 64-bit
- ▶ **Processor:** minimum 2.8 Ghz (Quad-Core) or higher, (Intel quad core with Hyper-Threading support strongly recommended)
- ▶ **RAM:** minimum 8 GB (16 GB and higher recommended)*
- ▶ **VGA card:** OpenGL 3.2 compatible with minimum 1 GB VRAM (3GB or higher recommended)
- ▶ 3-button mouse

Other Requirements

- ▶ Solid State Drive (SSD) for maximum performance (pref. 256 GB) – strongly recommended.

SUPPORTED LANGUAGES

- ▶ Chinese Simplified
- ▶ German
- ▶ Russian (optional)
- ▶ English
- ▶ Italian
- ▶ Spanish
- ▶ Finnish
- ▶ Japanese
- ▶ French
- ▶ Korean

* The amount of available RAM will directly affect your ability to open all points of a large data-set in a reasonable amount of time. See the following suggested maximum point load limits acc. to available RAM:

- 8 GB – 250 million
- 16 GB – 500 million
- 24 GB – 750 million
- 32 GB – 1 billion
- 64 GB – 2 billion

Note: larger amounts of data may take progressively longer to open.

Todd Jester
Applied Forensics Specialist
330-787-1884 | CTJ@laserinst.com

Contact your local Trimble Authorized Distribution Partner for more information

NORTH AMERICA
 Trimble Inc.
 10368 Westmoor Dr
 Westminster CO 80021
 USA

EUROPE
 Trimble Germany GmbH
 Am Prime Parc 11
 65479 Raunheim
 GERMANY

ASIA-PACIFIC
 Trimble Navigation
 Singapore PTE Limited
 3 HarbourFront Place
 #13-02 HarbourFront Tower Two
 Singapore 099254
 SINGAPORE

