



T100

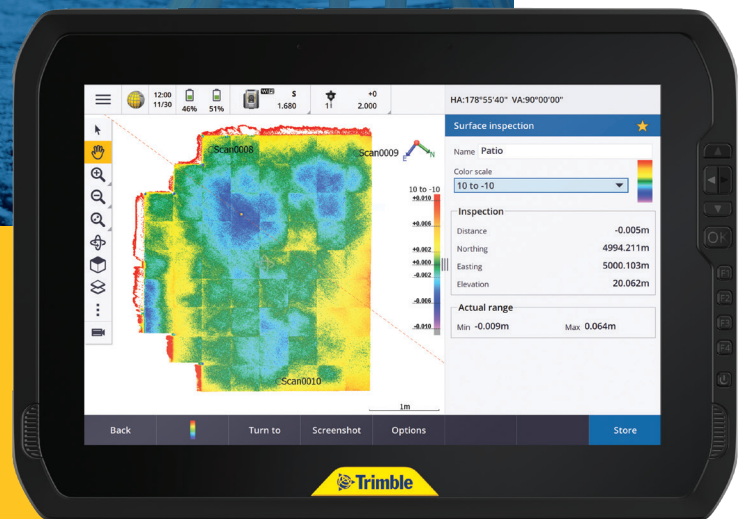
T A B L E T



Depend on it.

The **T100** is Trimble's latest high performance tablet. With a sleek, rugged design and 10-inch touchscreen you can read in any conditions, the T100 handles anything the work day dishes out. On or off the pole, the T100 is engineered to be comfortable and portable, enabling you to stay mobile while you work, even on the longest and most demanding days in the field. Whether you're deep in the woods or at a busy intersection, the T100 is the right tool for the job. Its industry-leading power management and large internal battery combined with fast charge capabilities increases productivity and reduces downtime. And don't let its slim profile fool you, the T100 is packed with intelligent design features. The expandable EMPOWER modules, user-configurable performance settings, and impressive IP-65 environmental specifications, make this an unrivaled tool for the full range of survey and GIS needs.

Learn more at Trimble.com/T100

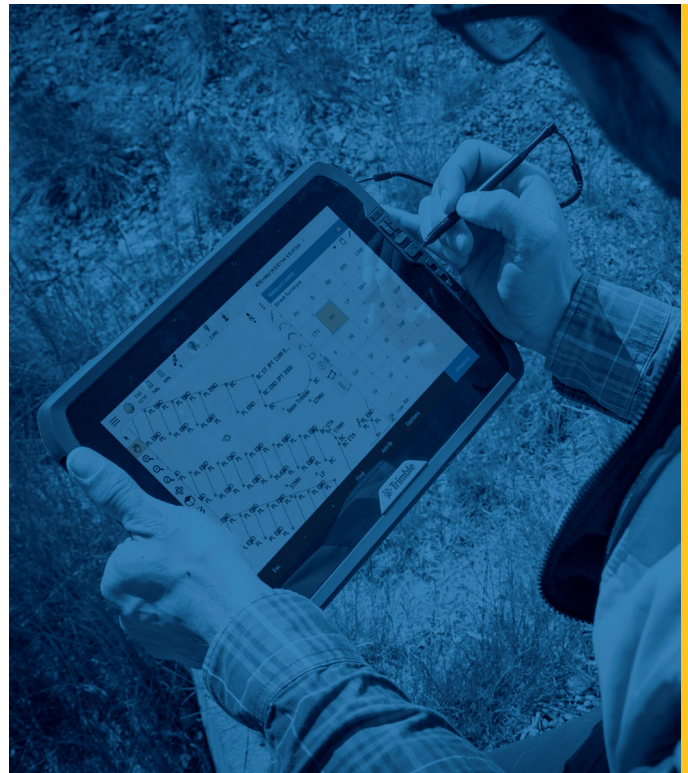


Enjoy the convenience of an all day battery— for a full days work, every day

The Trimble® T100 tablet is sleek and rugged for practical, everyday tasks. Feature packed, with industry-leading power delivery, the T100's large internal battery combined with fast charge capabilities means increased productivity and accuracy in the field.

The T100 handles anything the work day dishes out.

- Fast and powerful Intel i5 processor for efficient data collection and processing to support demanding field applications and create high-quality deliverables in the field or office.
- High performance large 10-inch touchscreen screen with maximum readability in either sunlight or lower light conditions.
- Enhanced user input experience including Wacom EMR stylus, physical directional buttons and all weather touch control.
- Full Windows® desktop applications bring office to the field.
- Long battery life, providing the convenience of all day field operation even in tough environments.
- Slim ergonomic design with intelligent design features, engineered to be comfortable and portable, enabling you to stay mobile while you work.
- Support for EM120 2.4 GHz EMPOWER module for connectivity with optical instruments. Compatibility with EMPOWER modules provides expansion of functionality and flexibility for user configurations.



The T100 at a glance...

- Large 10.1-inch touchscreen
- Full Windows desktop applications
- Integrated long life battery
- Ergonomic design
- Expandable Trimble EMPOWER modules

© 2021, Trimble Inc. All rights reserved. Trimble and the Globe & Triangle logo, are trademarks of Trimble Inc, registered in the United States and in other countries. Windows is a registered trademark of Microsoft Corporation in the United States and/or other countries. All other trademarks are the property of their respective owners. PN 022516-562 (01/21)



Precision Laser & Instrument, Inc.
85 11th Street | Ambridge, PA 15003
724-266-1600 | PLI@laserinst.com