



# Trimble Scanning

## 3D LASER SCANNERS

Precision Laser & Instrument, Inc.  
85 11th Street | Ambridge, PA 15003  
724-266-1600 | [PLI@laserinst.com](mailto:PLI@laserinst.com)

### INSTRUMENTS



X7



TX6



TX8

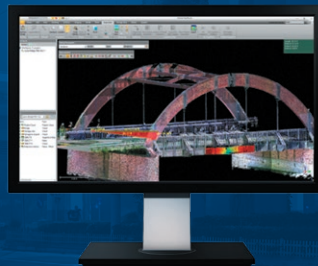


SX12

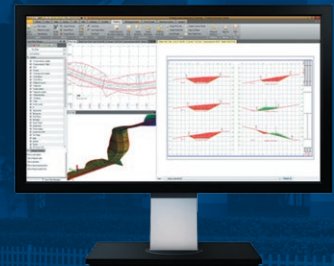
### SOFTWARE



Trimble Perspective



Trimble RealWorks



Trimble Business Center

**Many industries depend on 3D laser scanning to effectively complete projects quickly and accurately.**

Each project requires the right tools—whether you're delivering a topographic survey, scan data of as-built conditions, performing comprehensive data analysis, or creating a renovation model based on an existing structure. Trimble® has developed the 3D scanning solutions you can trust to meet these challenges and quickly capture, analyze, model and produce precise deliverables.

To help decide what 3D scanning solution is right for you, refer to the table below for a feature comparison between the X7, TX6, TX8, and SX12.



Compare				
Range	80 m	120 m	340 m	600 m
3D Point Acc @ 20 m	3.5 mm	3 mm	3 mm	2 mm
Leveling Accuracy	3"	1"	1"	0.5"
Typical Scan Duration	4 mns	3 mns	2 mns	6 mns
Imaging	3 x 10 MP 1 minutes for full dome	10 MP 1 minutes for full dome	10 MP 1 minutes for full dome	3 x 8.1 MP 2.5 minutes for full dome
Weight (incl. battery)	5.8 kg	11.2 kg	11.2 kg	7.8 kg
Calibration	Automatic calibration	Annual Service	Annual Service	Manual field calibration Service every 2 years
Typical Workflow	Full in-field registration	Target-based or cloud-based registration	Target-based or cloud-based registration	Survey
Field Software	Trimble Perspective	Onboard Remote Control	Onboard Remote Control	Trimble Access
Standard Warranty	2 Years	1 Year	1 Year	2 Years

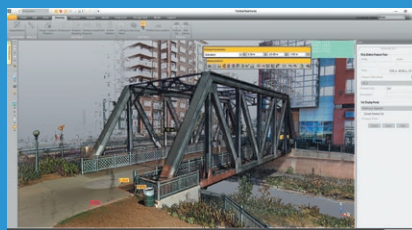
\* Refer to datasheet and FAQs for full details and limitations.



### Trimble Perspective

Trimble X7 field and office software.

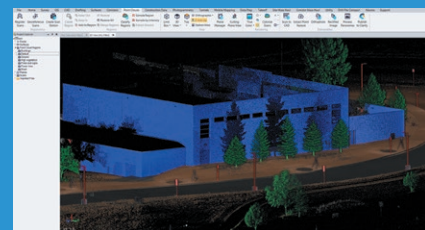
- ▶ Scanner control
- ▶ Automatic infield registration
- ▶ Dynamic 2D and 3D viewing
- ▶ Labels, annotations, measurements
- ▶ Registration refinement and reports



### Trimble RealWorks

Trimble's flagship scanning software.

- ▶ Scan and image processing
- ▶ Automated registration tools
- ▶ 2D CAD / 3D Models
- ▶ Inspection / Classification
- ▶ 3D animations



### Trimble Business Center

The industry's leading survey software.

- ▶ Field-to-finish survey software
- ▶ Roadway / corridor sections
- ▶ Volumetrics and earthworks
- ▶ Scan classification / drafting
- ▶ Feature coding

To learn more, visit: <https://geospatial.trimble.com/products-and-solutions/laser-scanning-solutions>