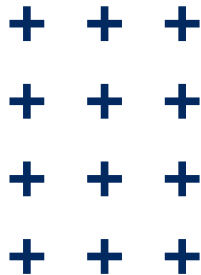
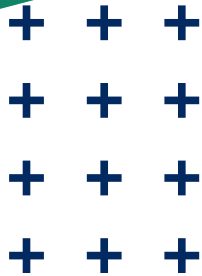


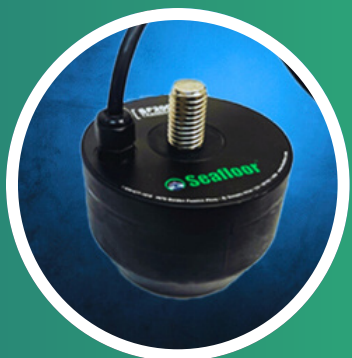


TRIDRONE GEN.3

The next generation of Uncrewed Surface Vessels for Hydrographic Survey Applications.



Redesigned for effortless operation and dependable results, featuring a built-in sonar for a streamlined workflow.



Hydrolite SF200-9



BUILT-IN TOPSIDE INTEGRATION

The Hydrolite topside is built directly into the new back plate, creating a protected, streamlined integration for cleaner installation and reliable operation



50% INCREASED ENDURANCE

Upgraded with a 6S LiPo battery, the TriDrone Gen.3 now offers 50% greater endurance for longer missions on the water.



X18 RCU UPGRADE

The TriDrone Gen.3 now features the X18 RCU for improved control, responsiveness, and a more intuitive user experience.

Specifications

TYPICAL SURVEY SPEED

2 knots (1 m/s)

TOP SPEED

4 knots (2 m/s) in ideal conditions

HULL LENGTH

1.24 m / 49 in

OVERALL WIDTH

0.86 m / 34 in

HULL MATERIAL

High-Density Polyethylene (HDPE) – UV resistant

HARDWARE

316 Stainless Steel

POWER

22.2 VDC Nominal

BATTERY ENDURANCE

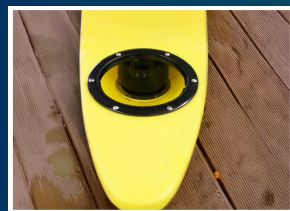
Up to 9 hours at survey speed with 6S 22Ah batteries (field-swappable)

REMOTE CONTROL RANGE

Up to 1 km (0.6 mi) line-of-sight, conditions dependent



New RCU



Integrated Sonar

The Hydrolite SF200-9 single frequency echosounder is integrated directly into the pontoon for a protected, streamlined deployment.



New Battery Compartment

Upgraded battery compartment designed to safely protect critical components while allowing effortless, secure access to the battery.



Redesigned Back Plate

New back plate features an integrated Hydrolite Topside for the sonar, with a power button and light indicators for simple operation and field setup.