

Trimble Capture

DATA COLLECTOR SOFTWARE

POWERFUL, SEAMLESS SIMPLICITY

Trimble® Forensics Capture software is a powerful yet intuitive data collector software that simplifies scene evidence gathering and enables a seamless transition to Trimble Forensics Reveal desktop software for in-depth analysis.

POWERFUL MOBILITY AT YOUR SIDE

Capture is the perfect tool for any accident investigator to control and command the SX10 when used with the Trimble T10 tablet. Capture is also compatible with Android devices such as the Trimble TDC100 and MM50. Whether you are using the industry leading SX10, robotic total station or a mechanical total station, Capture enables easy, precise data collection.

ROBUST AND VERSATILE. WITH POWERFUL SUPPORT.

With Capture, you can record points with an extremely high level of accuracy. Capture makes it easy to add/edit points and attach evidence markers or photos. And Capture helps you recognize errors early, so you can fix them on scene. Plus, you can get even better results by taking advantage of Trimble's training and teaching courses; they help you master the tools provided with Trimble Capture.

SMOOTHER, BETTER WORKFLOWS.

Capture enables workflows that are smooth, simple and easy to manage. In the field, you can see a diagram of your scene as you shoot it—in 2D or 3D, from any angle—and quickly zoom-in on evidence-rich areas. And, by adding notes and photos to your points, your work back in the office becomes easier and more productive.

STAY PRECISE AND PRODUCTIVE WITH TRIMBLE FORENSICS REVEAL

Reveal uses industry-leading optical and scanning technology, so you can maintain high levels of accuracy while boosting productivity. By supporting small datasets from surveying tools such as the Trimble C3 or full 3D scans created with the Trimble TX6 or SX10, Reveal allows you to quickly and effectively model, animate, record, and present compelling recreations and visualizations.

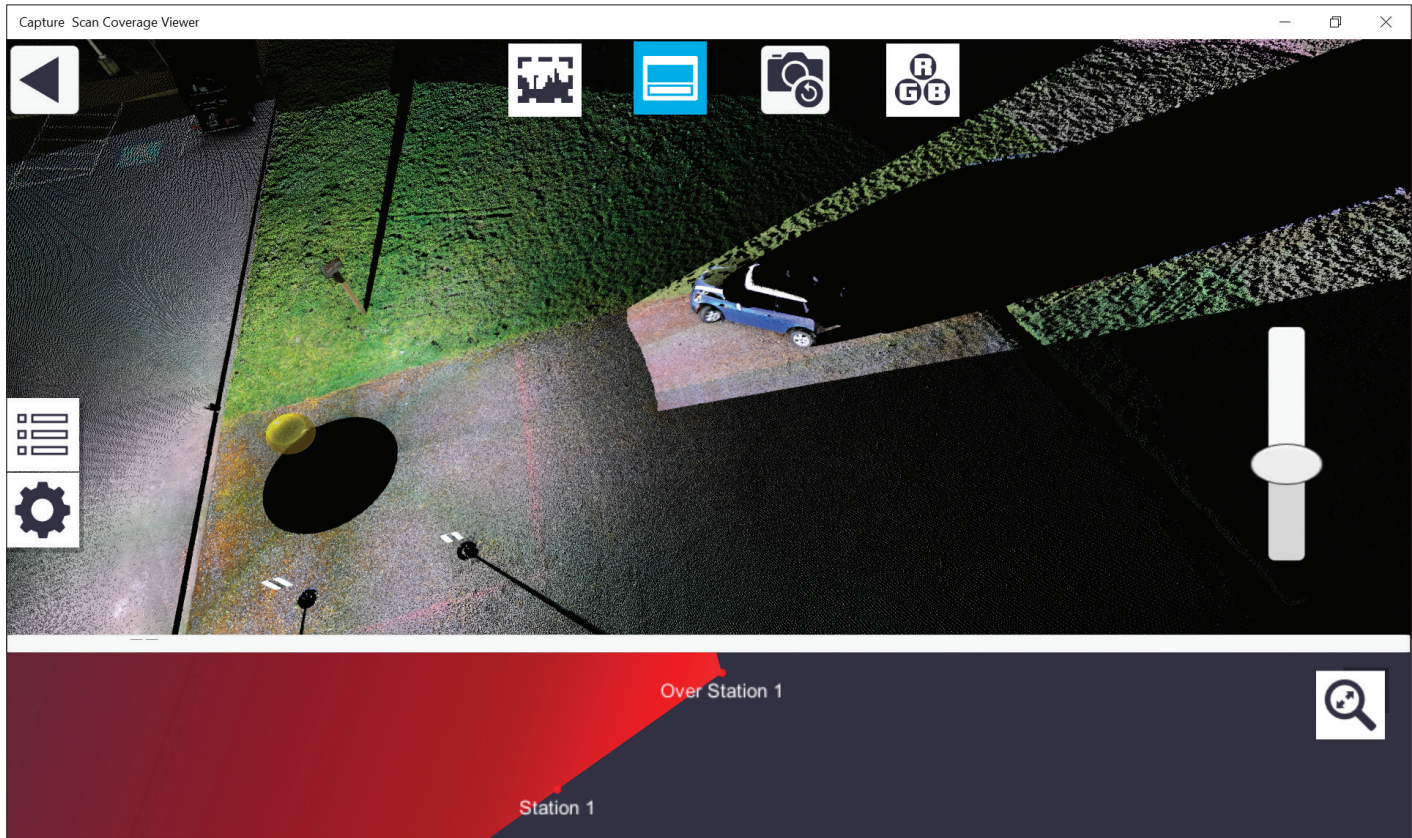
Key Features

- ▶ Full SX10 command, control and functionality.
- ▶ View and edit in 2D or 3D
- ▶ Seamless integration with Trimble Reveal
- ▶ Robotic total station support
- ▶ Built-in point cloud libraries
- ▶ Radio bridge connectivity
- ▶ Bluetooth® connection capabilities
- ▶ New and improved UI
- ▶ Windows® 10 and Android™ compatible on recommended devices
- ▶ Email sharing
- ▶ Evidence marker system with support for photos
- ▶ Touch controls; no need for a stylus
- ▶ Distance measurements between points
- ▶ Easy import options for Trimble Reveal





Trimble Capture DATA COLLECTOR SOFTWARE



KEY COMPONENTS

- ▶ **Scene notes.** Write and record the details for each scene by attaching notes.
- ▶ **Trimble Forensics Reveal Integration.** Seamlessly export field measurements and evidence photos to Trimble Forensics Reveal.
- ▶ **Built-in and Custom Point Code Libraries.** Track evidence and points accurately by taking advantage of the built point code libraries.
- ▶ **Evidence Markers.** Set points as evidence markers and export them to your office software. Use mobile device camera and total station camera to quickly capture reference photos and attach images to evidence markers.
- ▶ **Reposition Total Station.** You can reposition in two ways, allowing you to shoot large scenes from a variety of angles. Plus, you can keep shooting your scene with new points and existing points in one file.
- ▶ **Streamlined User Experience and Scene Management.** Easily sort scenes or search by file names to quickly find the scenes you're looking for.
- ▶ **Quickly Share and Email Files.** Email or sync scene files using apps installed on your mobile device.
- ▶ **Wizards.** Use in-app guides to help navigate complex workflows.

For information and downloads please visit:
forensics.trimble.com



Precision Laser & Instrument, Inc.
 85 11th Street
 Ambridge, PA 15003
 (724) 266-1600

Contact your local Trimble Authorized Distribution Partner for more information

NORTH AMERICA
 Trimble Inc.
 10368 Westmoor Dr
 Westminster CO 80021
 USA

EUROPE
 Trimble Germany GmbH
 Am Prime Parc 11
 65479 Raunheim
 GERMANY

ASIA-PACIFIC
 Trimble Navigation
 Singapore PTE Limited
 3 HarbourFront Place
 #13-02 HarbourFront Tower Two
 Singapore 099254
 SINGAPORE

© 2017–2018, Trimble Inc. All rights reserved. Trimble and the Globe & Triangle logo are trademarks of Trimble Inc., registered in the United States and in other countries. The Bluetooth word mark and logos are owned by the Bluetooth SIG, Inc. and any use of such marks by Trimble Inc. is under license. Android is a trademark of Google Inc. Windows is a registered trademark of Microsoft Corporation in the United States and/or other countries. All other trademarks are the property of their respective owners. PN 022516-344A (04/18)