

# Trimble Reveal

## SOFTWARE

### COLLECT, ANALYZE AND VISUALIZE. PRECISELY.

Trimble® Forensics Reveal software gives you all the tools you need to recreate, analyze and visualize crime and crash scene data. Whether you're capturing small data sets using tape measures or total stations or you're managing full 3D scan point clouds, Trimble Reveal delivers the precise results you need. You can create accurate records and present evidence in court with confidence.

### QUICK, EASY TO USE, AND EFFICIENT.

Reveal maximizes productivity. Use it to quickly and effectively model, animate, record, and present compelling recreations and visualizations. Its simplified, intuitive interface was designed for the needs of law enforcement. On-screen prompts guide both novice and veteran investigators through the process of recreating scenes. And it's all backed by legendary Trimble support, including training courses to help investigators master all of the powerful Reveal tools.

### WORK FASTER, WORK SMARTER WITH CAPTURE

Reveal works seamlessly with Trimble Forensics Capture. In the field, Capture quickly records points, lines and point cloud data via mobile collection devices such as the Trimble T10 tablet, Trimble TDC 100 or the MM50. Then Reveal makes the transition to the office easy. You can seamlessly import field measurements and evidence photos via email or by direct download from the device.

### VERSATILITY THAT MAKES RECONSTRUCTION EASY.

Reveal enhances workflow with features such as SmartRooms. SmartRooms enables you to quickly create buildings, placing walls, doors and windows within a scene. All dimensions are continuously updated in real time; you can use the most up-to-date field measurements to quickly recreate rooms and then accurately position evidence, even on multiple floors.

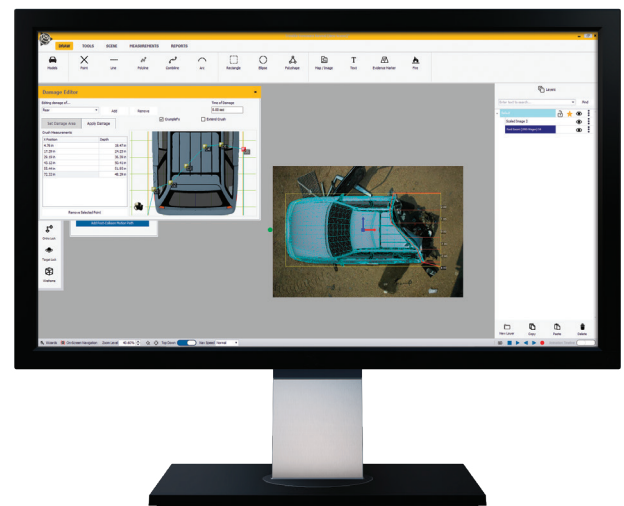
Reveal supports 64 bit Windows operating systems and also offers support for video depictions, momentum analysis, bullet trajectory, vehicle damage, and point clouds. It allows you to view created scenes in 2D or 3D, and set and create cameras for alternate viewpoints throughout your scene. In short, it offers the versatility police work demands.

### SYSTEM REQUIREMENTS

- ▶ Intel i7 or equivalent processor
- ▶ 16GB or 32GB RAM
- ▶ Windows 10
- ▶ Recommended Video: 4 GB (ie: ATI HD5650 / NVIDIA GeForce GT 540 / NVIDIA Quadro M1200) or better
- ▶ Recommended display resolution: 1920 x 1080. 1600 x 1200 if a second monitor is used for popup windows

## Feature List

- ▶ View and edit in 2D or 3D
- ▶ SketchUp 3D Model Warehouse support
- ▶ SmartRooms (quick buildings)
- ▶ 2D and 3D Animation
- ▶ Multiple sources for vehicle specifications (4N6Experts, Canadian Vehicle Specifications)
- ▶ Damage vehicles using 6/12 point crush, total station measurements, or "freehand"
- ▶ Evidence marker system with support for photos
- ▶ Drag factor/acceleration analysis
- ▶ Momentum analysis
- ▶ Bullet trajectory analysis
- ▶ CrashMath (reconstruction equation solver)





# Trimble Reveal SOFTWARE

## KEY FEATURES

- ▶ **Point Cloud Support.** Build a scene right on top of the cloud points.
- ▶ **Linear Momentum Tool.** A big time-saving tool designed to assist with the complex calculations associated with linear momentum.
- ▶ **Trimble Forensics Capture Integration.** Seamlessly import field measurements and evidence photos from Trimble Forensics Capture.
- ▶ **Built-in Model Libraries.** Create scenes with the hundreds of models already included. Categories include vehicles, marine, rail, military, domestic items, furniture, animals, trees, road signs.
- ▶ **Trimble Sketchup Support.** Access thousands of models from the Trimble Sketchup Model Warehouse.
- ▶ **Automatic Feature Generation.** Automatically create scene objects from measurements using customized point codes.
- ▶ **Integrated Momentum Analysis.** Use momentum analysis to determine pre-impact vehicle velocities from skids. Full equation reductions are included in reports.
- ▶ **SmartRooms.** Create buildings in minutes.
- ▶ **Vehicle Specifications.** Set the dimensions of vehicle models using two possible sources of vehicle specification.
- ▶ **Integrated Drag Factor Analysis.** Quickly calculate accurate drag coefficients for any surface.
- ▶ **Animation Timeline.** Easily synchronize events in your animations.
- ▶ **Multiple Measurement Systems.** Measure using total station, baseline, and triangulation. Capture data and interpret them whatever way suits your workflow.
- ▶ **Streamlined Layer and Object Management.** See all layers and objects in an easy-to-view hierarchy. Easily toggle layer and object visibility. Move objects between layers by drag-and-drop. Never lose track of an object again.
- ▶ **Drawing Tools.** Use simple and highly customizable drawing tools to create a variety of lines and shapes.

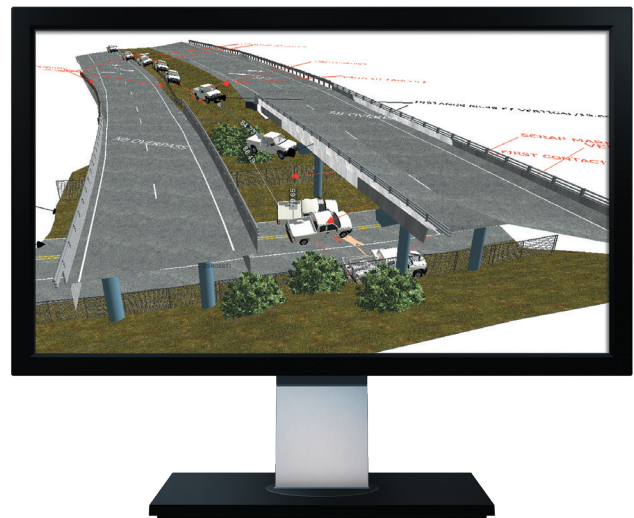
- ▶ **Aerial Imagery.** Display accurately scaled aerial imagery directly from Bing, or user sources.
- ▶ **Evidence Markers.** Insert customizable evidence marker models and attach photos.
- ▶ **AvatarFx.** Add poseable human models to scenes.
- ▶ **Wizards.** Use step-by-step guides to navigate more complicated workflows.
- ▶ **Report Generation.** Generate reports ranging from evidence images and point logs to momentum analysis, crush energy, evidence marker, and drag factor.
- ▶ **Movie-making.** Record movies of a video depiction to the standard MP4 format.

For information and downloads please visit:

[forensics.trimble.com](http://forensics.trimble.com)

Trimble Forensics Reveal Tutorials available on our YouTube channel

<https://www.youtube.com/channel/UCHtBUioKf1o-sLzMXRb2B6A>





Precision Laser & Instrument, Inc.  
85 11th Street  
Ambridge, PA 15003  
(724) 266-1600

Contact your local Trimble Authorized Distribution Partner for more information

**NORTH AMERICA**  
Trimble Inc.  
10368 Westmoor Dr  
Westminster CO  
80021  
USA

**EUROPE**  
Trimble Germany  
GmbH  
Am Prime Parc 11  
65479 Raunheim  
GERMANY

**ASIA-PACIFIC**  
Trimble Navigation  
Singapore PTE Limited  
3 HarbourFront Place  
#13-02 HarbourFront Tower Two  
Singapore 099254  
SINGAPORE